



# HEXAGON

---

## Installation WEB - Client Since Version 13.0.5

OPD  
14 October 2021  
Created with Version 13.0.5.1

## Information about this document

All rights, including translation in foreign languages, are reserved. It is not allowed to reproduce any part of this document in any way without written permission of Hexagon.

Parts of this document may be automatically translated.

## Document History

Version	Date	Author(s)	Modifications / Remarks
	14.10.2021	GA	Initial Release
	14.10.2021	GA	Translation



## CONTENTS

<b>1</b>	<b>System requirement</b> .....	<b>4</b>
<b>2</b>	<b>Installation (Server)</b> .....	<b>6</b>
<b>3</b>	<b>Necessary configurations before setup</b> .....	<b>7</b>
3.1	Installation of the IIS: .....	8
<b>4</b>	<b>Installation of the web client</b> .....	<b>9</b>
<b>5</b>	<b>Folder release for the IIS user</b> .....	<b>12</b>
<b>6</b>	<b>qs-STAT-Web first start</b> .....	<b>13</b>
<b>7</b>	<b>Configuring the IIS</b> .....	<b>14</b>
<b>8</b>	<b>Update within Version 13</b> .....	<b>22</b>

# 1 System requirement

The following special system requirements are in place for the server, on which the central server provision as well as the Web client are installed, that differ from the system requirements of classic server-client applications (Windows version):

## Operating systems

- ***The following Windows server operating systems supported by Microsoft: Server2012 R2, Server2016, Server2019***

## Number of cores

- ***Server with 8 cores***

## RAM

- ***16 GB RAM***

## Databases

- ***MS SQL as well as Oracle databases***

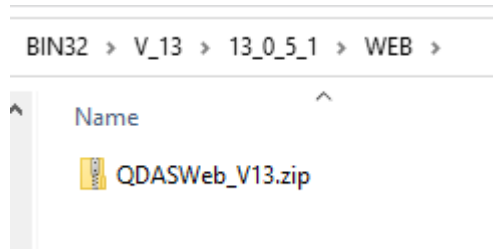


Due to the restrictions that apply to MS SQL *Express* databases, they are not recommended.

It is preconditioned that the databases and the Upload are installed on another server.

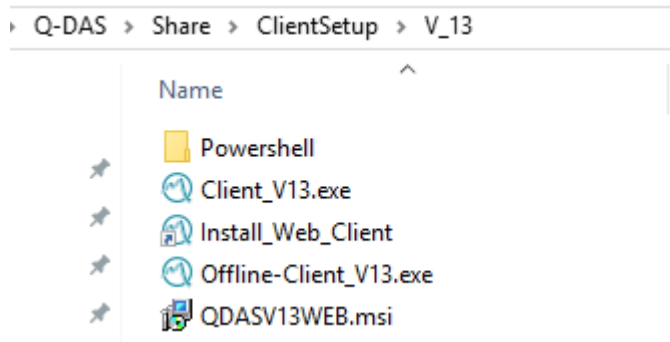
The new components of the setup that must be available in the share installation are:

The WEB subfolder of the minor release 13\_0\_5\_x:



A zip file can be found there, which is unzipped later during the web client setup.

In addition to the client setup you need the web components as Windows Installer package.



## 2 Installation (Server)

Client distribution can take place after a successful server provision. This is described in a separate document.

The web client setup is realised within the client installation. The web client installation must occur on the same PC/server as the server provision. Installing the web client to another server is excluded.

To note here:



It is not recommended to operate the Q-DAS web applications with access databases (licence and configuration). It is necessary to transfer **all** Q-DAS databases to Microsoft SQL or Oracle when using the Q-DAS Web. If access databases are used for test purposes, the share installation as well as the web client must have been installed via a UNC release on the server and the rights must have been changed to “full access”.



The server installation (share) must be placed with or updated to the Version 13.0.5.x. Otherwise, the necessary components are missing for web setup.



The installation is carried out on a server operating system. No operability guarantee can be taken on for web installations on a non-server operating system.



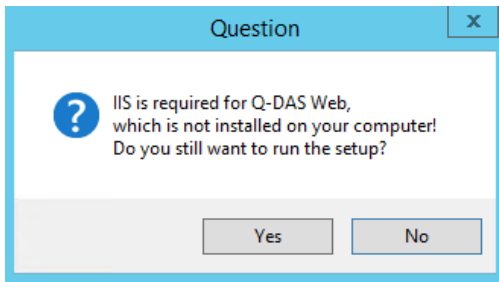
Currently only qs-STAT Web, solara.MP Web, Q PLV and Q RTM Web are operable with Version 13.0.5.x.



While connecting to the SQL databases, username and password must be utilised in the database connection. Registration through Windows authorisation is currently not possible for the IIS.

### 3 Necessary configurations before setup

The IIS must be activated and certain options set before a web client setup takes place. Otherwise, the following report comes during web setup:

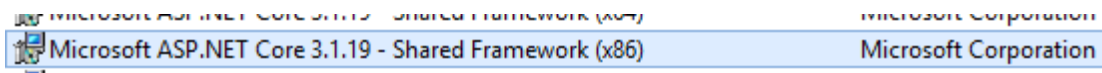


The setup in this case shall be directly stopped and the configuration of the IIS shall be carried out. In order to be able to use the IIS in the Q-DAS environment, certain prerequisites must be met.



These must be setup by the customer's IT.

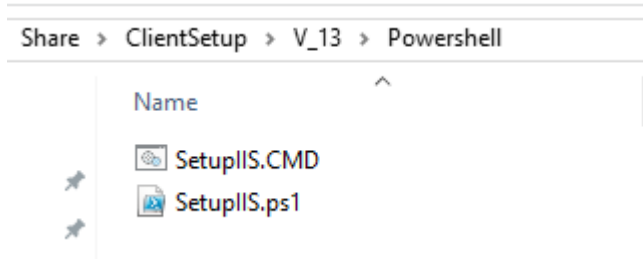
Furthermore, it must be checked whether Microsoft ASP.Net Core 3.1.19 is installed on the server.



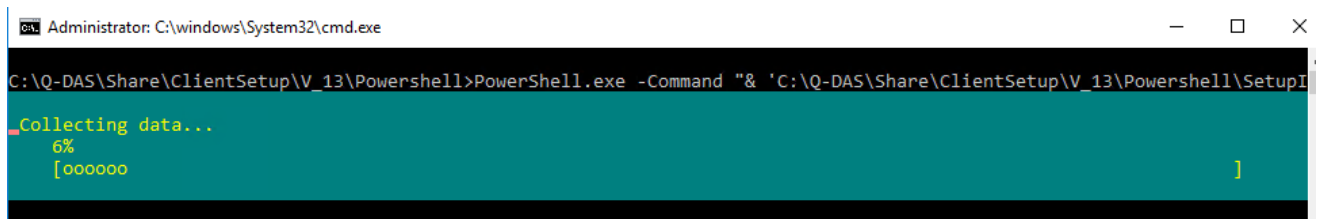
If this component missing, it must be installed in advance by the local IT department.

### 3.1 Installation of the IIS:

In order to install the IIS to the server, a PowerShell script is made available. After a server provision of the Version 13.0.5, this is located in the subfolder next to the client setup:



The necessary components in IIS are activated by running the CMD file as administrator.

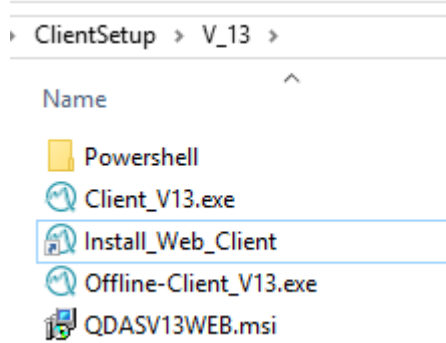


A short description of all options that will be activated can be found in Section 7 “Configuring the IIS”.

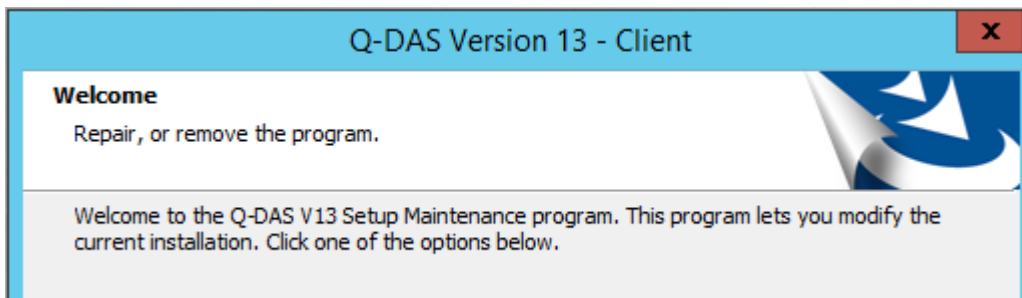


## 4 Installation of the web client

The installation of the web client is started via the client setup from Version 13.0.2.x together with the “-qdas\_web” start parameter. The “Install\_Web\_Client” start-link is made available for this.






After starting installation, the welcome window comes with the notice that “Q-DAS Web” will also be installed.



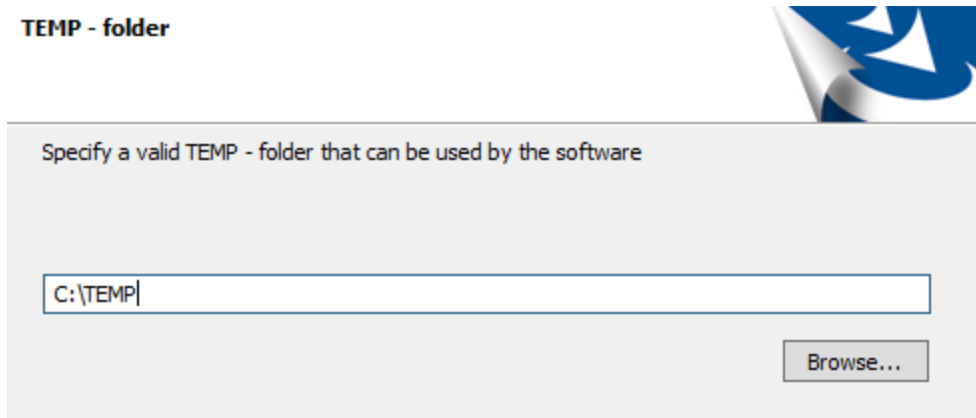
A “standard client” is installed along with the web client:



	Q-DAS V13 Q-DAS GmbH	10/27/2020
	Q-DAS V13 Client Q-DAS GmbH	10/27/2020
	Q-DAS V13 Web Hexagon	110 KB 10/27/2020

The general description of the client setup is described in the description “V13\_OPD\_Installation\_CC\_CLIENT”.

The only difference in setup is the question of a TEMP directory.

**TEMP - folder**

Reason:

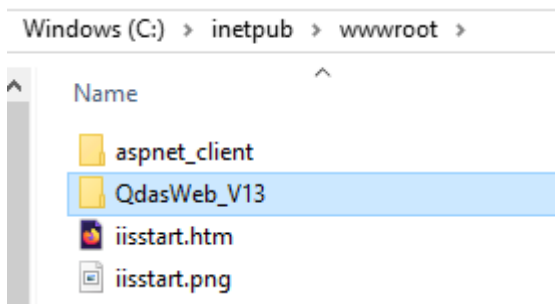
In standard setup, the %temp% folder is used for the temporary files. The IIS is required for the Q-DAS Web. This user has no %temp% folder of their own, the web application would then not be operable. In order to get around this, the web client setup specifies its own Temp directory, which will then be created on the client.

Excerpt from the \*ClientName\*\_qs-STAT.ini:

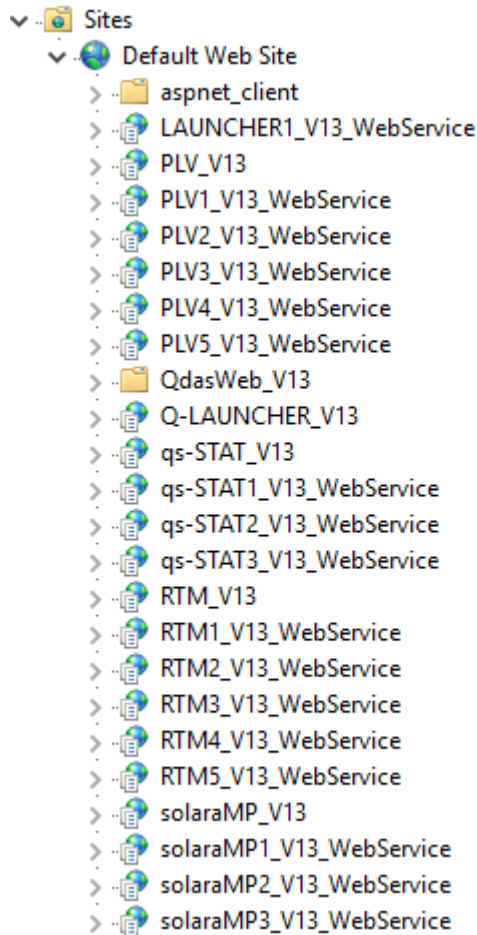
```
; TEMP-Ordner // Temp folder  
tmp=C:\TEMP\qs-STAT
```

The following elements exist after the web client setup:

As a subfolder of c:\inetpub\wwwroot das Verzeichnis QdasWeb\_V13.



The platforms were created in IIS. In order to ensure load distribution, 3 WebService are created for qs-STAT and solara.MP respectively, 5 WebService are created for RTM and PLV respectively. Access to the different WebService occur automatically via the application.

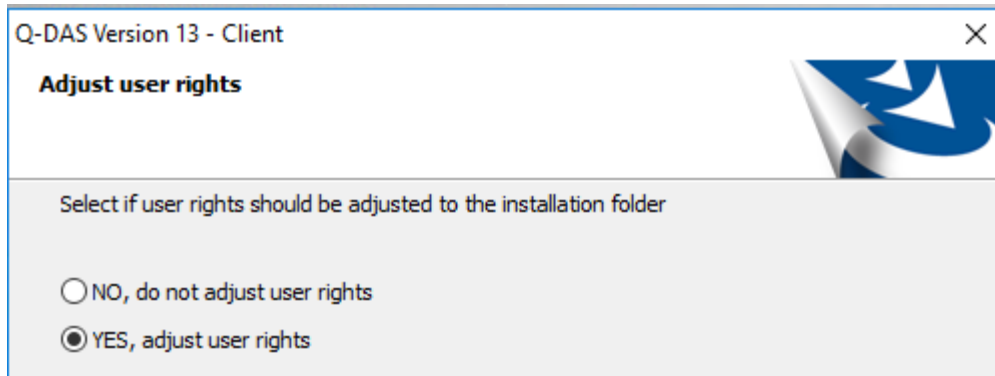


The path to %Client\_Product%.ini was indicated per WebService in the corresponding qs-STAT-loc.ini.

```
qs-STAT-loc.ini
1 [Paths]
2 webservice_logfile=C:\TEMP\PLV1web_V13.log
3 logfile_level=2
4 qs_stat_ini_file=\\DeweiTest2016\Q-DAS\Share\INI\DEFAULT\DeweiTest2016_V13_PLANT_VIEWER.INI
5
```

## 5 Folder release for the IIS user

An inquiry appears during setup asking whether the necessary rights should be set. Without these rights, the web application is not operable.



The rights are set for:

- IUSR
- IIS\_IUSRS

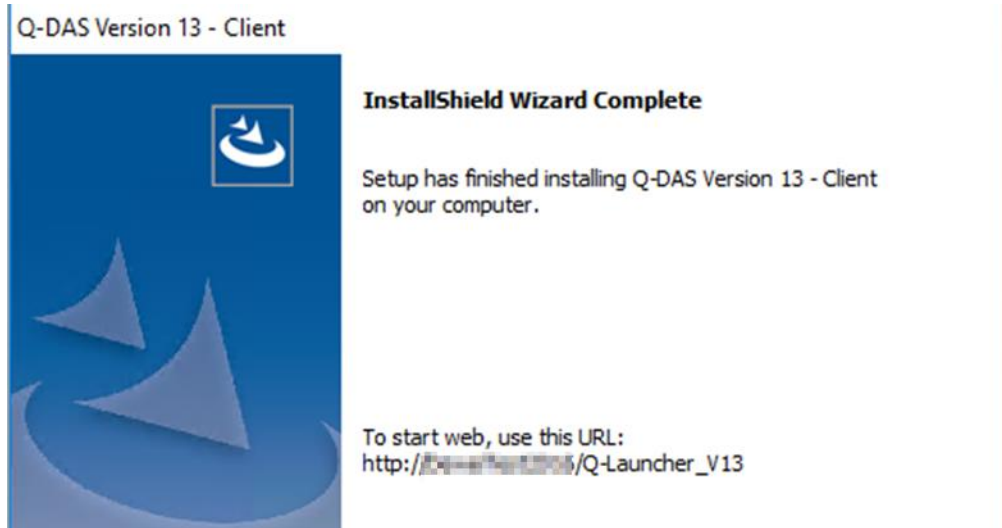
The user “IUSR” as well as “IIS\_IUSRS” require full access to the following directories:

- the selected TEMP directory
- the Q-DAS folder with the provision of the share
- the folder QdasWeb\_V13\Q-Launcher\_V13 at C:\inetpub\wwwroot



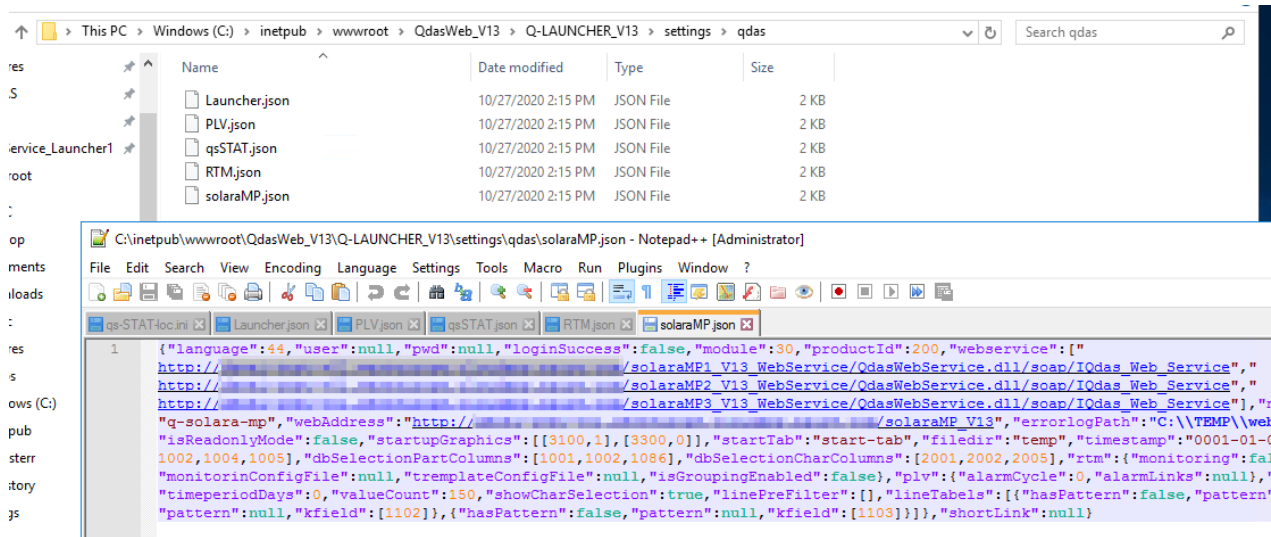
## 6 qs-STAT-Web first start

After the web client setup, the URL is shown that opened the website and started the Q-Launcher.



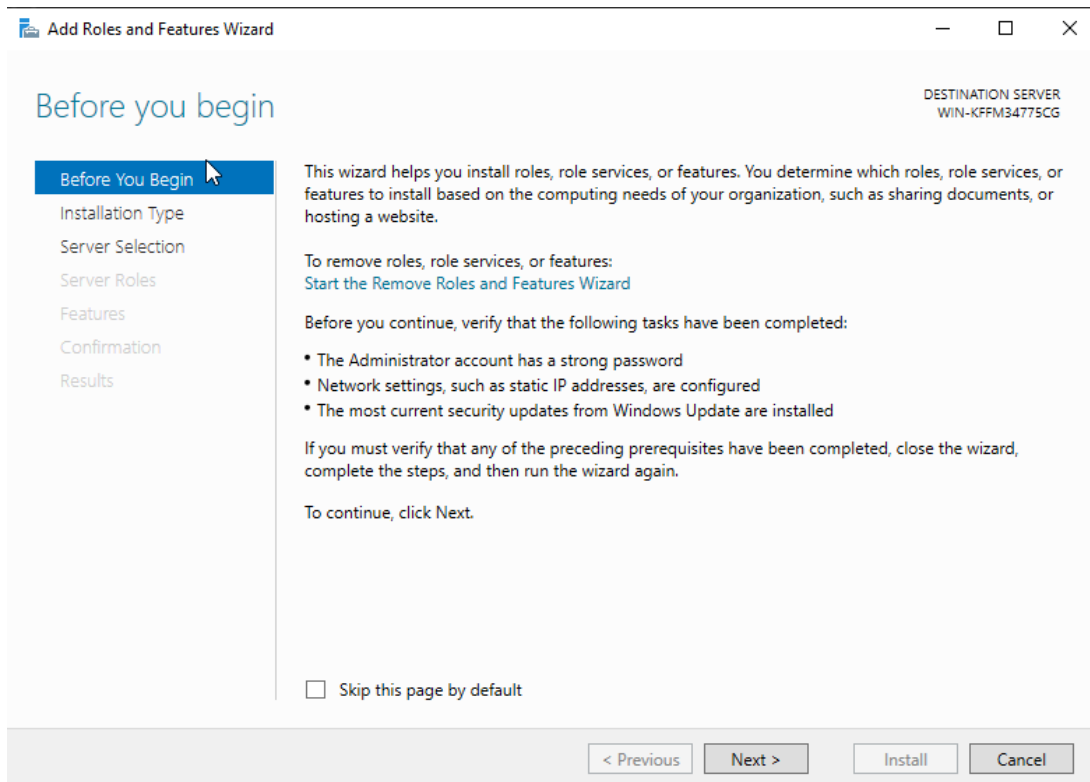
Depending on the operating system, the IIS must be started first.

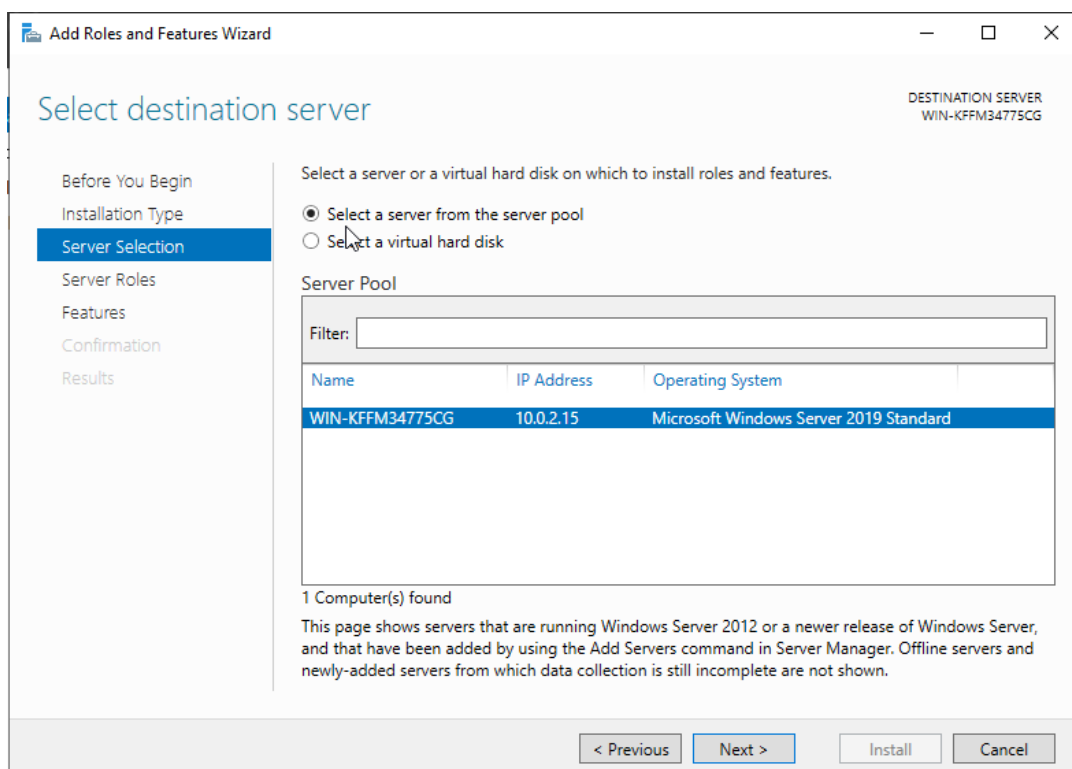
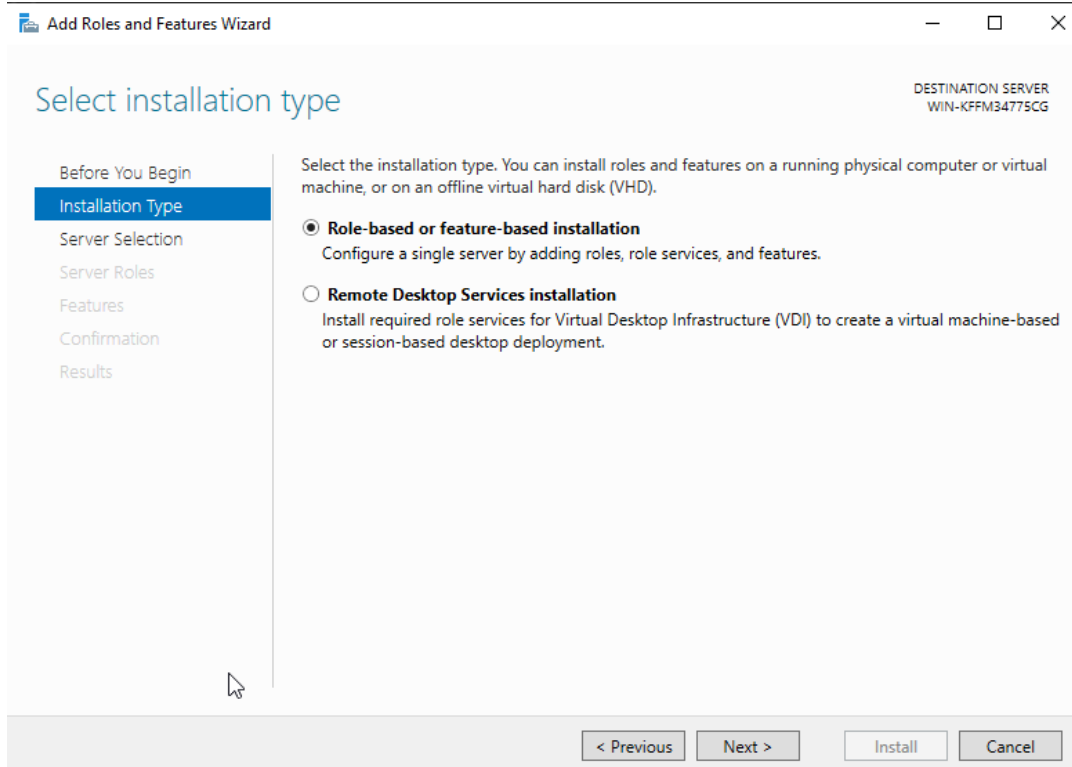
If this link cannot be used, for example by a web installation outside the company network (cloud), the configuration files may have to be modified to replace the server name with the DNS release. This occurs in the files in the folder C:\inetpub\wwwroot\QdasWeb\_V13\Q-LAUNCHER\_V13\settings\qdas.



## 7 Configuring the IIS

This section describes in broad strokes the setting up of the IIS, if this were to be carried out manually. This shall serve as clarification everything that is activated by the activation of the IIS with the PowerShell script.





Add Roles and Features Wizard

DESTINATION SERVER  
WIN-KFFM34775CG

### Select server roles

Before You Begin  
Installation Type  
Server Selection  
**Server Roles**  
Features  
Web Server Role (IIS)  
  Role Services  
Confirmation  
Results

Select one or more roles to install on the selected server.

Roles	Description
<input type="checkbox"/> Active Directory Certificate Services	Web Server (IIS) provides a reliable, manageable, and scalable Web application infrastructure.
<input type="checkbox"/> Active Directory Domain Services	
<input type="checkbox"/> Active Directory Federation Services	
<input type="checkbox"/> Active Directory Lightweight Directory Services	
<input type="checkbox"/> Active Directory Rights Management Services	
<input type="checkbox"/> Device Health Attestation	
<input type="checkbox"/> DHCP Server	
<input type="checkbox"/> DNS Server	
<input type="checkbox"/> Fax Server	
<input checked="" type="checkbox"/> File and Storage Services (1 of 12 installed)	
<input type="checkbox"/> Host Guardian Service	
<input type="checkbox"/> Hyper-V	
<input type="checkbox"/> Network Policy and Access Services	
<input type="checkbox"/> Print and Document Services	
<input type="checkbox"/> Remote Access	
<input type="checkbox"/> Remote Desktop Services	
<input type="checkbox"/> Volume Activation Services	
<input checked="" type="checkbox"/> <b>Web Server (IIS)</b>	
<input type="checkbox"/> Windows Deployment Services	
<input type="checkbox"/> Windows Server Update Services	

< Previous   Next >   Install   Cancel

Add Roles and Features Wizard

### Add features that are required for Web Server (IIS)?

The following tools are required to manage this feature, but do not have to be installed on the same server.

- Web Server (IIS)
  - Management Tools
    - [Tools] IIS Management Console

Include management tools (if applicable)

Add Features   Cancel



Add Roles and Features Wizard

DESTINATION SERVER  
WIN-KFFM34775CG

## Select features

Select one or more features to install on the selected server.

**Features**

- .NET Framework 3.5 Features
- .NET Framework 4.7 Features (2 of 7 installed)
  - .NET Framework 4.7 (Installed)
  - ASP.NET 4.7
  - WCF Services (1 of 5 installed)
    - HTTP Activation
    - Message Queuing (MSMQ) Activation
    - Named Pipe Activation
    - TCP Activation
    - TCP Port Sharing (Installed)
- Background Intelligent Transfer Service (BITS)
- BitLocker Drive Encryption
- BitLocker Network Unlock
- BranchCache
- Client for NFS
- Containers
- Data Center Bridging
- Direct Play
- Enhanced Storage
- Failover Clustering
- Group Policy Management
- Host Guardian Hyper-V Support
- I/O Quality of Service
- IIS Hostable Web Core
- Internet Printing Client
- IP Address Management (IPAM) Server
- iSNS Server service
- LPR Port Monitor
- Management OData IIS Extension

**Description**

HTTP Activation supports process activation via HTTP. Applications that use HTTP Activation can start and stop dynamically in response to work items that arrive over the network via HTTP.

< Previous   Next >   Install   Cancel

Add Roles and Features Wizard

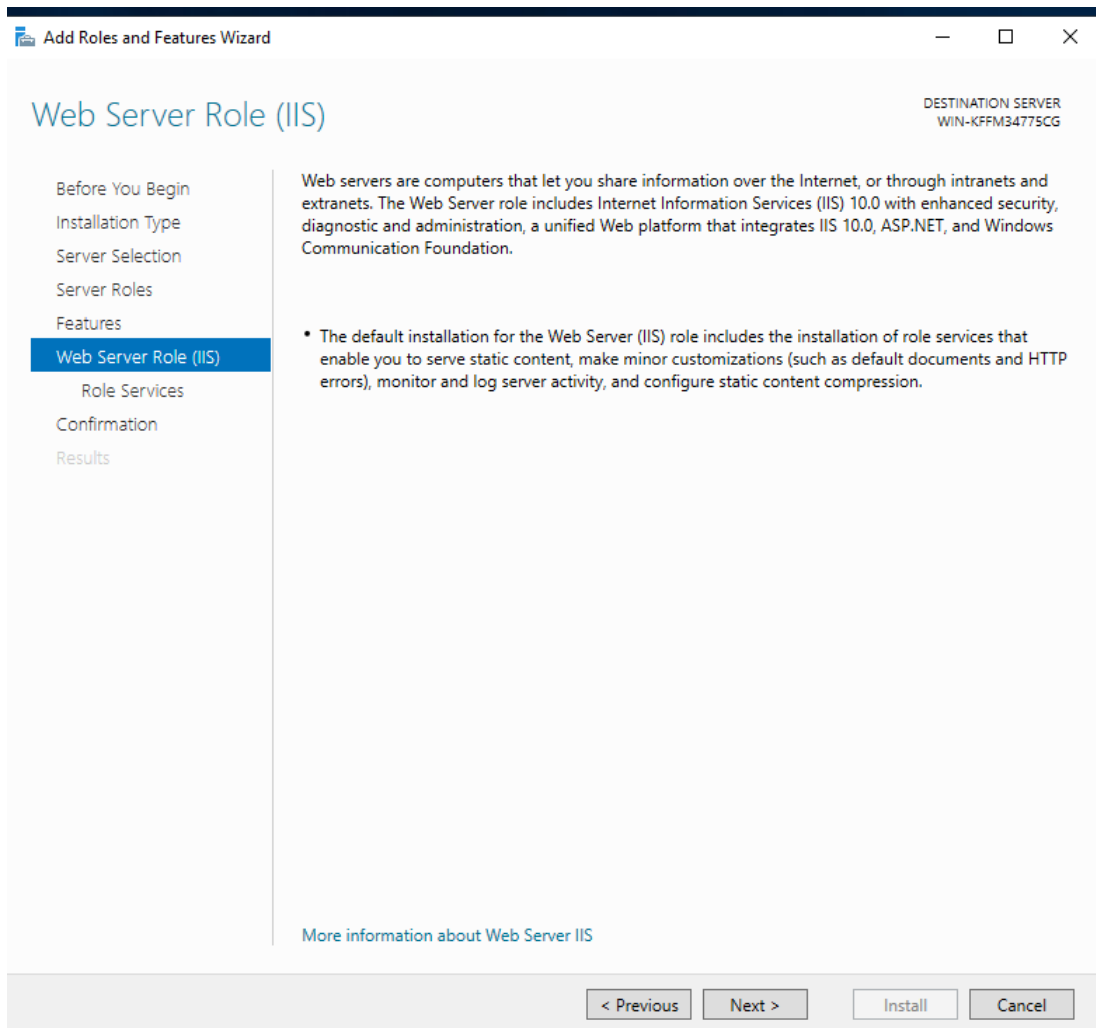
### Add features that are required for HTTP Activation?

You cannot install HTTP Activation unless the following role services or features are also installed.

- ▲ Web Server (IIS)
  - ▲ Web Server
    - ▲ Application Development
      - ASP.NET 4.7
      - ISAPI Extensions
      - ISAPI Filters
      - .NET Extensibility 4.7
    - ▲ Windows Process Activation Service
      - Configuration APIs
      - Process Model

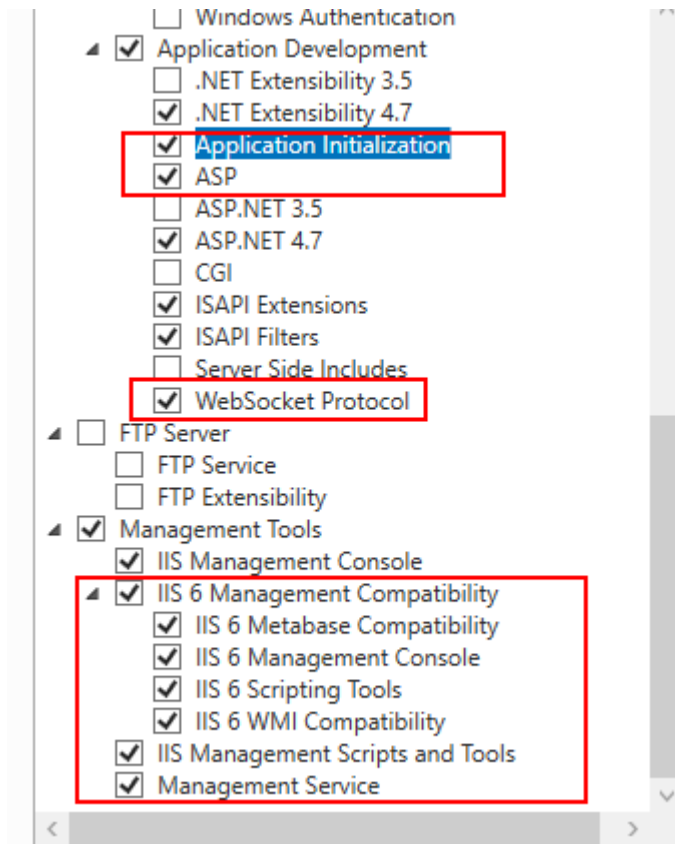
Include management tools (if applicable)

Add Features   Cancel



Select the role services to install for Web Server (IIS)

Role services	Des
<ul style="list-style-type: none"> <li><input checked="" type="checkbox"/> Web Server           <ul style="list-style-type: none"> <li><input checked="" type="checkbox"/> Common HTTP Features               <ul style="list-style-type: none"> <li><input checked="" type="checkbox"/> Default Document</li> <li><input checked="" type="checkbox"/> Directory Browsing</li> <li><input checked="" type="checkbox"/> HTTP Errors</li> <li><input checked="" type="checkbox"/> Static Content</li> <li><input type="checkbox"/> HTTP Redirection</li> <li><input type="checkbox"/> WebDAV Publishing</li> </ul> </li> <li><input checked="" type="checkbox"/> Health and Diagnostics               <ul style="list-style-type: none"> <li><input checked="" type="checkbox"/> HTTP Logging</li> <li><input type="checkbox"/> Custom Logging</li> <li><input type="checkbox"/> Logging Tools</li> <li><input type="checkbox"/> ODBC Logging</li> <li><input type="checkbox"/> Request Monitor</li> <li><input type="checkbox"/> Tracing</li> </ul> </li> <li><input checked="" type="checkbox"/> Performance               <ul style="list-style-type: none"> <li><input checked="" type="checkbox"/> Static Content Compression</li> <li><input type="checkbox"/> Dynamic Content Compression</li> </ul> </li> <li><input checked="" type="checkbox"/> Security               <ul style="list-style-type: none"> <li><input checked="" type="checkbox"/> Request Filtering</li> <li><input type="checkbox"/> Basic Authentication</li> <li><input type="checkbox"/> Centralized SSL Certificate Support</li> <li><input type="checkbox"/> Client Certificate Mapping Authentication</li> <li><input type="checkbox"/> Digest Authentication</li> <li><input type="checkbox"/> IIS Client Certificate Mapping Authenticatic</li> <li><input type="checkbox"/> IP and Domain Restrictions</li> <li><input type="checkbox"/> URL Authorization</li> <li><input type="checkbox"/> <u>Windows Authentication</u></li> </ul> </li> </ul> </li> </ul>	App infr hos feat exte tech to p res outj clier



Add Roles and Features Wizard
— □ ×

DESTINATION SERVER  
WIN-KFFM34775CG

## Confirm installation selections

- Before You Begin
- Installation Type
- Server Selection
- Server Roles
- Features
- Web Server Role (IIS)
- Role Services
- Confirmation
- Results

To install the following roles, role services, or features on selected server, click Install.

Restart the destination server automatically if required

Optional features (such as administration tools) might be displayed on this page because they have been selected automatically. If you do not want to install these optional features, click Previous to clear their check boxes.

**.NET Framework 4.7 Features**

- ASP.NET 4.7
- WCF Services
- HTTP Activation

**Web Server (IIS)**

- Management Tools
- IIS 6 Management Compatibility
- IIS 6 Management Console
- IIS 6 Scripting Tools
- IIS 6 Metabase Compatibility
- IIS 6 WMI Compatibility
- IIS Management Console
- Management Service
- IIS Management Scripts and Tools

**Web Server**

- Application Development
- Application Initialization
- ASP
- ASP.NET 4.7
- ISAPI Extensions
- ISAPI Filters
- .NET Extensibility 4.7
- WebSocket Protocol
- Common HTTP Features
- Default Document
- Directory Browsing

[Export configuration settings](#)  
[Specify an alternate source path](#)

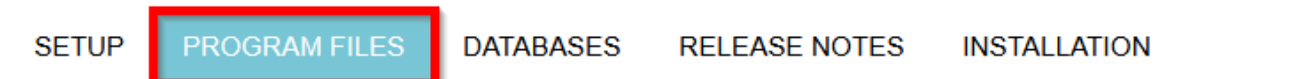
< Previous
Next >
Install
Cancel

## 8 Update within Version 13

If the WEB has already been installed with an older version 13, the update package is available on the homepage.:

<https://www.q-das.com/en/service/software-downloads>

Here as an example for version 13.0.5.1:



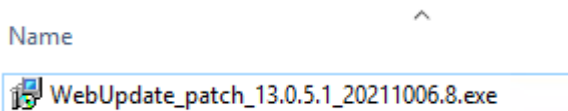
### Program files

File	Version	Date	Description
» <a href="#">13_0_5_1_Update-Package.zip (ZIP 524 MB)</a>	13 / 211001 (13.0.5.1)	2021-10-01	Update-Package 13 / 211001 (13.0.5.1)
» <a href="#">13_0_5_1_WebUpdate_patch_20211001_7.zip (ZIP 31 MB)</a>	13 / 20211001.7 (13.0.5.1)	2021-10-01	WebUpdate patch 13 / 20211001.7 (13.0.5.1)



Vor dem Update des WEB ist ein Update der Datenbanken (Werte / Konfigurationen / Text) durchzuführen!

After unpacking the setup file, simply execute it:



The IIS is stopped, a security prompt appears to start the update, then the IIS is started again.

