

UPGRADE FROM VERSION 12 TO VERSION 13 GENERAL APPROACH AND NOTES

87298374 0987298374982739
8470 2 **Q-DBM** 7 1545 82138 12
7198723987 987239 98729872
PROCELLA 234 154 13 544 565
9872 2719827 7 27198723987
45 8912 687723 **VIDARA** 27198
21245 666 1214432 329 **Q-QIS**
928 234 345 344 4718723987
0187309 445 455 4877298374
M-QIS DASHBOARD 772728498
81 4981 **DESTRA** 918 2589 23
59 **QS-STAT** 49814981 45598
M-QIS ENGINE 49983 259 1547
7487 29837409872 98374982
73984702 **SOLARA.MP** 987349
9283 120 38 485 0 2 38 49081



KNOW
YOUR
STATISTICS



CONTENTS

1	Preface	3
1.1	Apps & features – Q-DAS software after a major release upgrade to version 13	4
1.2	Apps & features – Q-DAS software on a client after a V13 client installation.....	4
2	Update preparations.....	5
2.1	Master.ini.....	5
2.2	File names of Access databases	6
2.3	Local installation connected to central (MSSQL) values databases	7
2.4	Local installations connected to local MSSQL databases.....	8
2.4.1	Brief instruction	9
2.5	Checking database structures	9
2.6	Database update when applying several Access values databases	10
3	How to upgrade server provisioning to V13.....	11
3.1	Modifications on the shared directory	14
4	How to upgrade a local installation to V13.....	17
4.1	Modifications on the local directory.....	22
5	Manual Update of Access databases.....	25
5.1	Preparing the “Databases” directory.....	26
5.2	Starting the DB update	26

1 PREFACE

Upgrading version 12 to version 13 (and higher) requires a **completely** different approach compared to previous major release upgrades.

Previous major releases have basically been installed in parallel; users had to update the software manually.

The structure of version 12, however, was modified in a way that an installation of version 13 is **automatically** an **upgrade** of the previous version.

The installation and update of Q-DAS Statistical Software is standardised and documented. A standardised approach and documentation shall help our customers perform these tasks independently. However, you may still access our optional services regarding installation, update and consulting. Please contact our head office <mailto:info.qdas.mi@hexagon.com> in case of need.

Since Q-DAS Statistical Software is highly flexible and can be used in various industries and fields of application, it might be reasonable to use consulting services and to receive support. Please contact our head office <mailto:info.qdas.mi@hexagon.com> to get in touch with one of our experts supporting you not only in installing or updating Q-DAS software but also in implementing it.

Q-DAS upgrade in short

- After installing version 13 (server provisioning or local installation), the operating system and programs/apps **only** list Q-DAS V13 and no longer any other versions.
- Programs/apps offer a version 13 **client** installation similar to the previous version 12 **client** installation.
- Start links to launch version 12 **remain** next to the ones in version 13.



An update of version 13 is installed in the **same** directory as version 12; however, it is now the **only** version that can be **uninstalled!** **By uninstalling** version 13, you uninstall the **entire** structure, even the one of version 12!



Even if you are provided with the start links of both versions, you **must not use** both versions permanently and simultaneously. Users are only able to access the previous version while they are updating the software to version 13. While updating the software, users are not allowed to adjust any new settings since version 12 is not able to interpret them as a configuration.

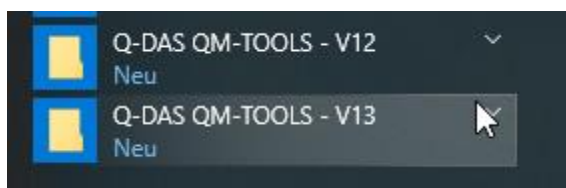
1.1 Apps & features – Q-DAS software after a major release upgrade to version 13

After installing a local V13 or completing a V13 server provisioning on the same operating system that previously provided version 12, users will now only find version 13 under **Apps & features**.

Apps & Features



However, the start links of both versions remain.



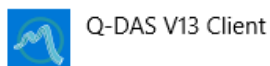
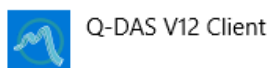
Caution: When you uninstall the software now, you will delete the entire platform and release **only** the licence of version 13.

If you no longer want to apply V13 on the respective computer/server but you want to continue using version 12 until you switch to V13, you **only** release the licence of version 13 in the licence tool.

1.2 Apps & features – Q-DAS software on a client after a V13 client installation

After completing a V13 client installation on the same computer that previously provided the V12 client, users will find **both** clients under **Apps & features**.

Apps & Features



You may thus uninstall the V12 client after you switched to version 13.

Both start links will also be available until you uninstall the V12 client.

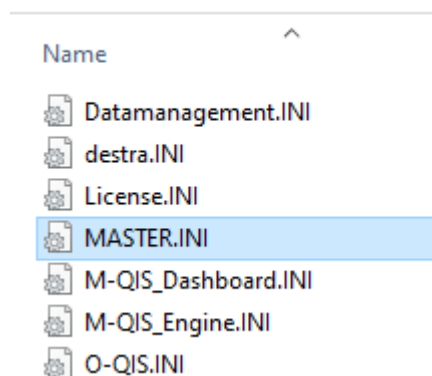
2 UPDATE PREPARATIONS

In order to avoid problems updating the software, check the following aspects **before you start the update**.

2.1 Master.ini

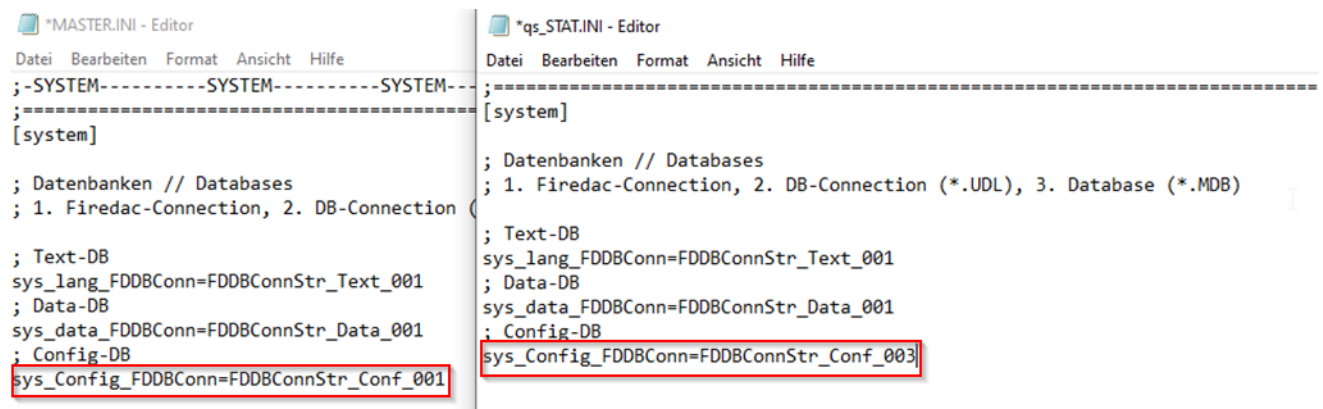
The update only applies an *.INI file to identify files (e.g. databases), the MASTER.INI.

▶ DEFAULT



If you want to change paths in the INI files while running version 12, you always have to ensure that the MASTER.INI has been adapted, too.

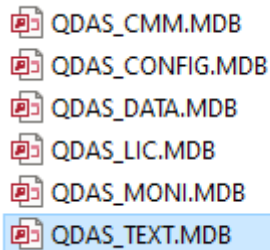
The most important settings that need to be checked are the database connections. In this example, the database connection to the configuration database applied in version 12 of qs-STAT is the third database connection. The MASTER.INI, however, has **not** been adapted yet. An automated database update (in case of a local installation) will currently update the **wrong** database (that is no longer in use).



You have to adapt this connection in the MASTER.INI **before you start** the setup of version 13.

2.2 File names of Access databases

Applying Access databases, the databases have to keep the naming conventions of the software.

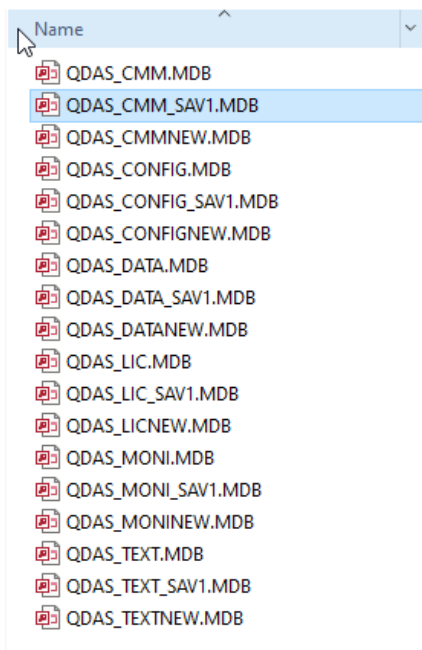


QDAS_CMM.MDB
QDAS_CONFIG.MDB
QDAS_DATA.MDB
QDAS_LIC.MDB
QDAS_MONI.MDB
QDAS_TEXT.MDB

The database update does **not** start in case there is at least one of these databases **missing**.

- The system renames all existing databases by adding "SAV1".
- The setup adds the new databases characterised by adding a "NEW" to the file name.
- The databases with a "NEW" in their file name now get the original name.

Version 13 thus receives brand new databases.



Name

QDAS_CMM.MDB
QDAS_CMM_SAV1.MDB
QDAS_CMMNEW.MDB
QDAS_CONFIG.MDB
QDAS_CONFIG_SAV1.MDB
QDAS_CONFIGNEW.MDB
QDAS_DATA.MDB
QDAS_DATA_SAV1.MDB
QDAS_DATANEW.MDB
QDAS_LIC.MDB
QDAS_LIC_SAV1.MDB
QDAS_LICNEW.MDB
QDAS_MONI.MDB
QDAS_MONI_SAV1.MDB
QDAS_MONINNEW.MDB
QDAS_TEXT.MDB
QDAS_TEXT_SAV1.MDB
QDAS_TEXTNEW.MDB

In this case, the setup does **not** open any database update request during the installation. You have to update the databases manually later on.

2.3 Local installation connected to central (MSSQL) values databases

There are installation types rolling out local installations but connecting every single one of them to a **central** values databases (they apply in common) or even to a central configuration database (they apply in common), each one of them either central MSSQL databases or Access databases.

If you apply this installation type of version 12, we recommend you do **not confirm** a database update request and update any database manually instead. Otherwise, you will update the central database every time you update a local installation.



We do not recommend you use central **Access** databases. We put this type of installation into question.

As we have already mentioned in the preface, we offer some optional services regarding installation, update and consulting.

2.4 Local installations connected to local MSSQL databases

Even some local installations apply local MSSQL databases (usually MS SQL Express). You may update them automatically. However, the automated update during the local installation only updates the **contents** of MSSQL or Oracle databases.

This is why you need to update the structure of the MSSQL database **before** you start the setup.

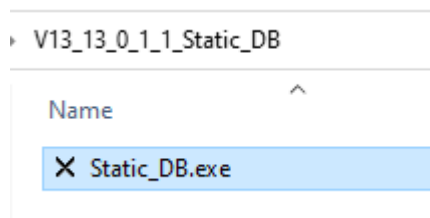
Since version 13, Q-DAS **Static DB** tool to update the database structure. It is available for download at

<https://www.q-das.com/de/service/software-downloads#tab1524>

Programmdateien

Datei	Version	Datum	Beschreibung	Kommentar
» 13_0_1_1_Update-Package.zip (ZIP 436 MB)	200131 (13.0.1.1)	2020-01-31	Update-Package 13 / 200131 (13.0.1.1)	
» V13_13_0_1_1_Static_DB.zip (ZIP 43 MB)	200131 (13.0.1.1)	2020-02-07	Static_DB.exe 13 / 200131 (13.0.1.1)	

The Static DB tool is available as an application and does not require any qs-STAT installation.

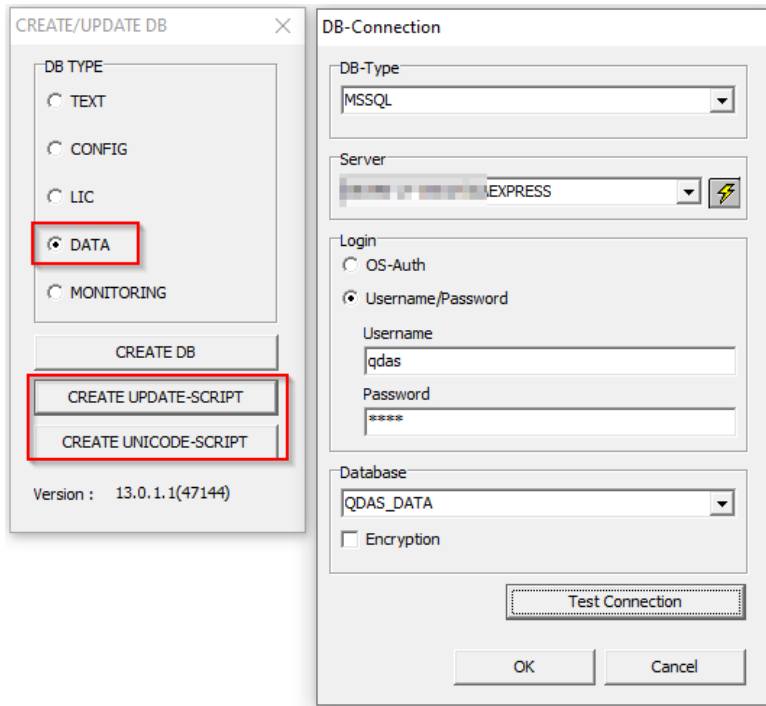


Find detailed information about how to update the structure of MSSQL databases in the **"Updating existing databases on a Microsoft SQL Server"**.

<https://www.q-das.com/de/service/support-hotline#faq579>

2.4.1 Brief instruction

After executing Static_DB.exe, you select the database type (DATA). Use the "Create Update Script" and "Create Unicode Script" buttons to open the "DB-connection" dialogue box. After selecting the database, you click "OK" to create the respective update script. Using "Microsoft SQL Server Management Studio", this script now applies to the respective database.



2.5 Checking database structures

Especially when updating very old databases or MSSQL databases that have often been moved, we recommend you check one or two tables in order to ensure that the primary keys are still available.

In case of a MSSQL configuration database, check the primary key of the QDAS_GRAPHICS table; applying a MSSQL values database, you check the primary key of the WERTEVAR table.



In case they are no longer available, you will not be able to update the databases.

2.6 Database update when applying several Access values databases

The automated database update is only able to update the values database that is defined in the MASTER.INI at the time you start the update.

Any other database has to be updated manually.



We do not recommend you use several Access databases to store data. Many companies use this constellation to keep the amount of data stored in a database small since Access restricts the amount of data. However, when you update such as system, a project team shall discuss whether it might be reasonable to replace Access databases by MSSQL.

We put this type of installation into question.

As we have already mentioned in the preface, we offer some optional services regarding installation, update and consulting.

3 HOW TO UPGRADE SERVER PROVISIONING TO V13

This example assumes that the V12 server provisioning is available under C:\Q-DAS\Share. The server provisioning of V13, however, requires a shared directory you want to use for the installation, i.e. C:\Q-DAS (\\server name\Q-DAS\...)

The document about server provisioning provides general information. Read the chapter “Planning server provisioning”.

<https://www.q-das.com/de/service/software-downloads#tab1527>

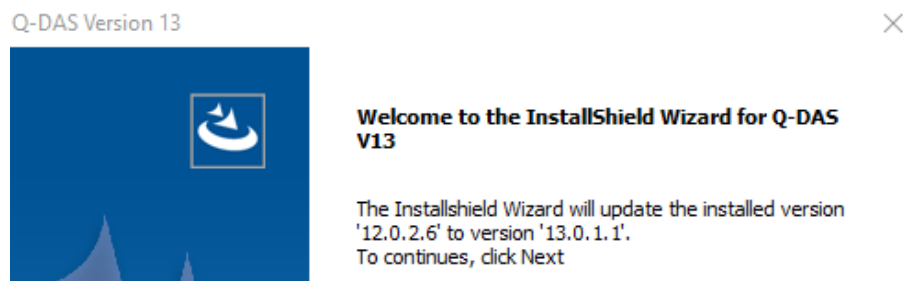
Since the upgrade from version 12 to version 13 is an update, there are less dialogue boxes since the update applies the basic settings of version 12. Here are the most important aspects regarding the setup.

Download the setup from the Q-DAS website at

<https://www.q-das.com/en/service/software-downloads>

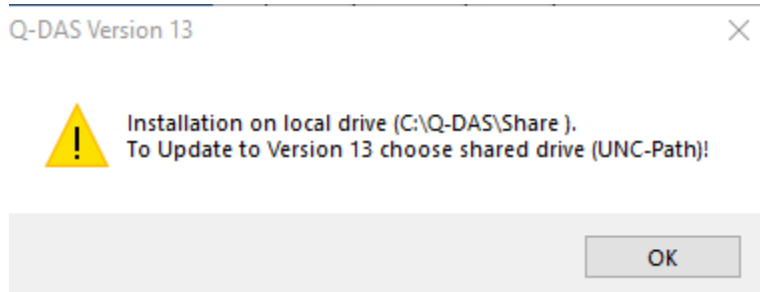
The head office of Q-DAS sends the required licence file to all existing customers in the months after the release of version 13. You are **not** able to start the setup/upgrade without the licence file of version 13.

A start dialogue box opens after you executed Setup_V13.exe. The text already indicates that the setup deals with an update. It also shows you previously installed V12 version.

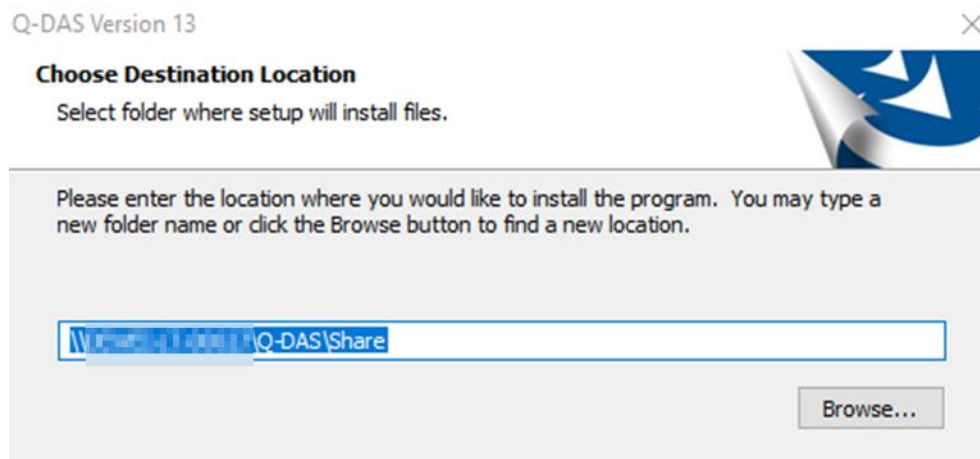


Caution: In case you **expect** an update but the setup does **not** show this screen but the standard start screen of a new V13 server provisioning, you did not start the V13 setup on the computer you used to execute the setup pf version 12. Cancel the setup, find the computer you applied to start the setup of version 12 and use this very computer for the installation. In case the setup is unable to find any version 12 of Q-DAS software in the registry, it starts a new installation.

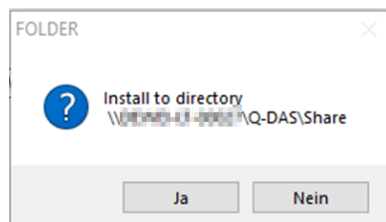
In case the installation of the V12 has been executed directly on a local drive, the following information appears.



The setup identifies the shared directory and proposes it directly. In case the server provides several shared directories, you have to specify the correct path.



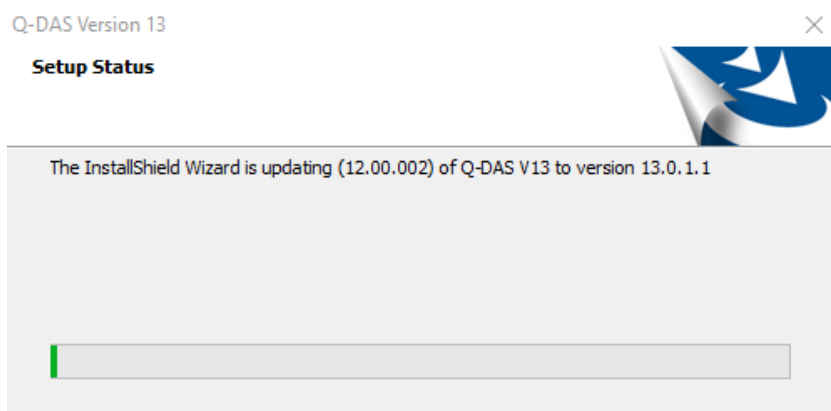
The usual conformation prompt opens asking you whether you want to install to this directory.



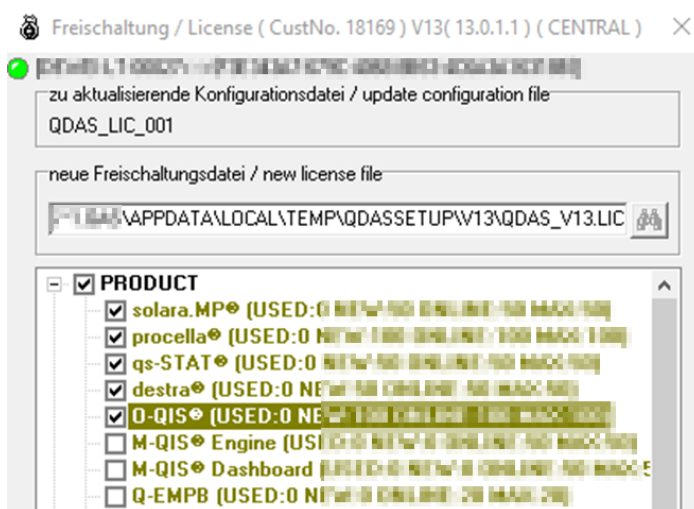
Select the licence file of version 13.



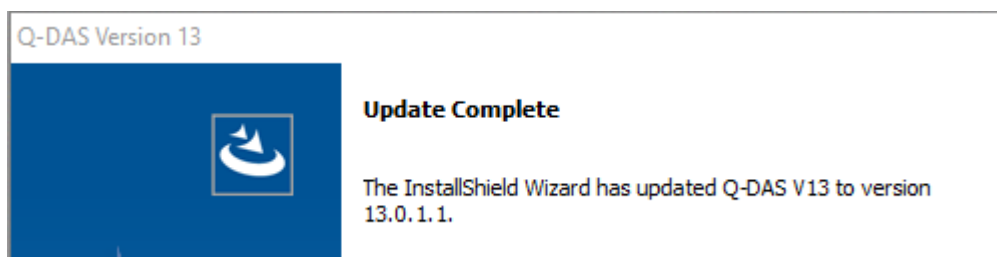
The installation starts.



After the setup was completed, the system asks which licences you want to register and how many of them.

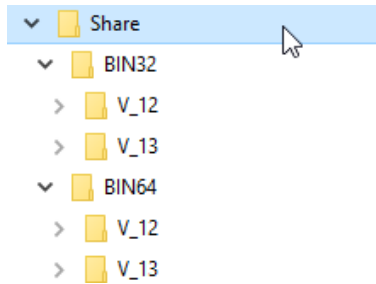


The server provisioning is now completed.

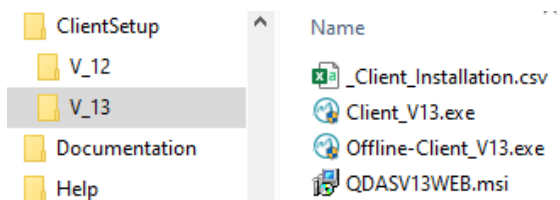


3.1 Modifications on the shared directory

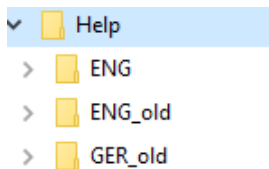
A separate V_13 folder now contains the binary files.



A separate V_13 folder contains the client setup.

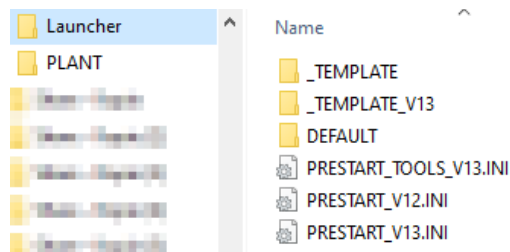
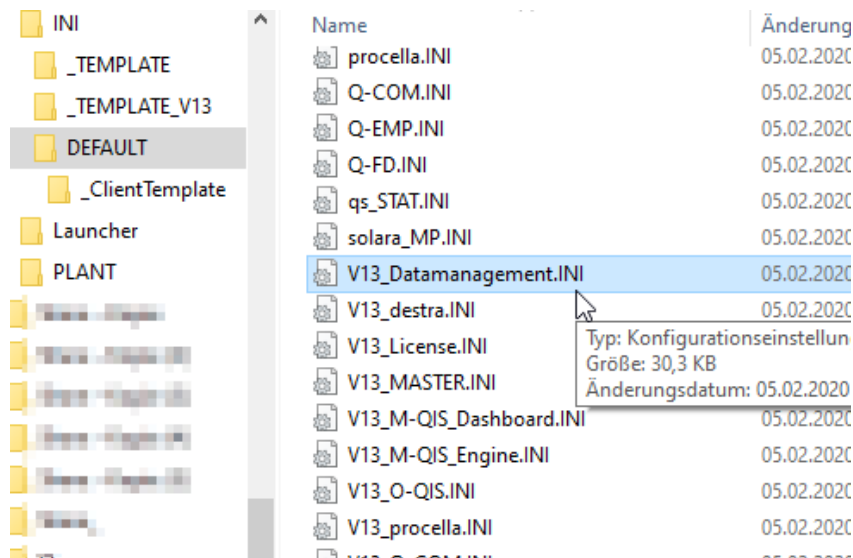


The folders containing the help files of version 12 are renamed and are thus no longer linked to the software. The current program help of version 13 (that is still under construction) is now connected to the software. The new program help of version 13 is available in two languages and provided in the ENG folder. Since the entire program help is going to be restructured, it is still under construction.

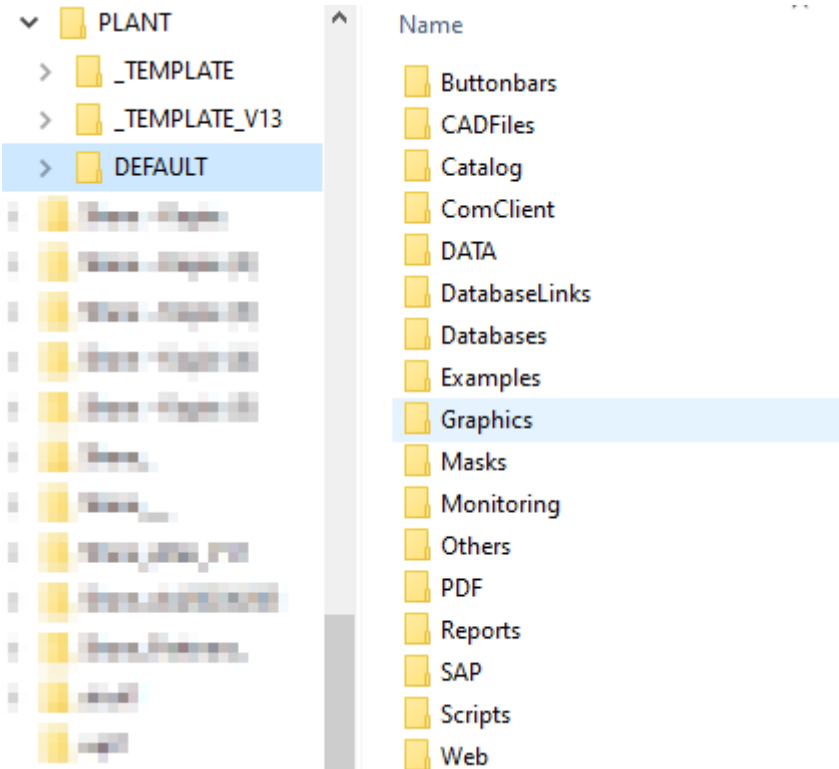


The Default folder now includes the INI files and the launcher INI files including the prefix “V13_”. Since version 13, an update always applies the INI files of version 12 as a template for the INI files of version 13, only new information are added. The setup thus updates the INI files, i.e. it updates the settings adjusted in version 12.

The _Template_V13 sub-folder stores the template INIs in the same way as the new server provisioning of version 13 will provide them.



The PLANT folder is hardly subject to any changes. All new files are stored in the _Template_V13 sub-folder. Only the "Others" now includes a file necessary for V13. The database connection for the licence database is duplicated and modified to comply with the new notation of the licence database connection. Now, version 12 and version 13 are able to access it.



Caution: You have to update the databases manually later on. The approach required to update Access databases or SQL databases is described in a different document available on our homepage <https://www.q-das.com/de/service/software-downloads>



The _Template_V13 folder contains new report templates/masks/RS232def.ini and additional elements. Before updating the software, the customer's key users have to decide which new files need to be checked and/or applied.

4 HOW TO UPGRADE A LOCAL INSTALLATION TO V13

This example assumes that the local installation of version 12 is available under C:\Program Files (x86)\Q-DAS\Local... and C:\ProgramData\Q-DAS\Local... (the same applies to a 64-bit installation).

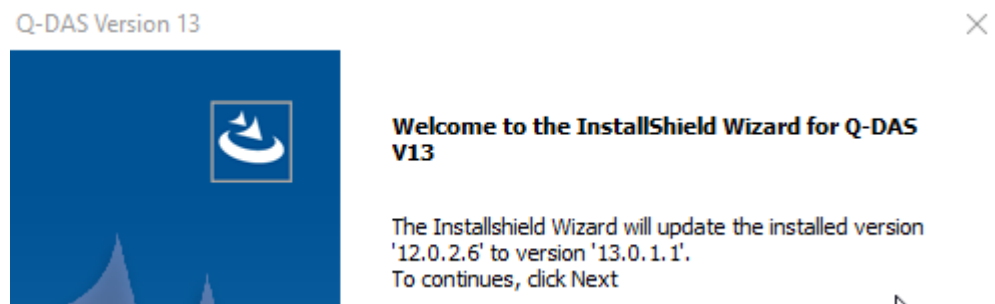
Since the upgrade from version 12 to version 13 is an update, there are less dialogue boxes since the update applies the basic settings of version 12. Here are the most important aspects regarding the setup.

Download the setup from the Q-DAS website at

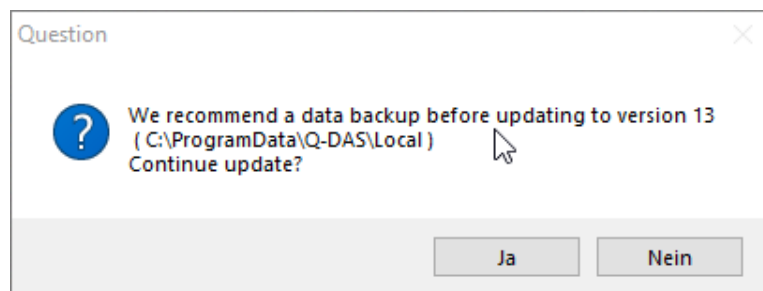
<https://www.q-das.com/en/service/software-downloads>

The head office of Q-DAS sends the required licence file to all existing customers in the months after the release of version 13. You are **not** able to start the setup/upgrade without the licence file of version 13.

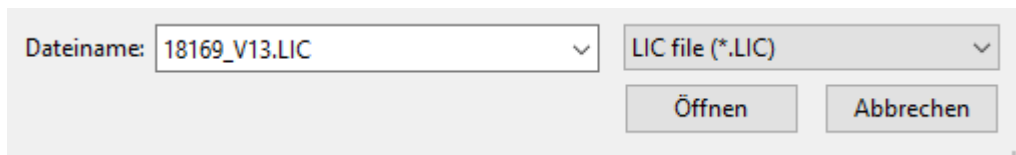
A start dialogue box opens after you executed Setup_V13.exe. The text already indicates that the setup deals with an update. It also shows your previously installed V12 version.



We highly recommend you create a backup the existing system. The respective confirmation prompt opens.

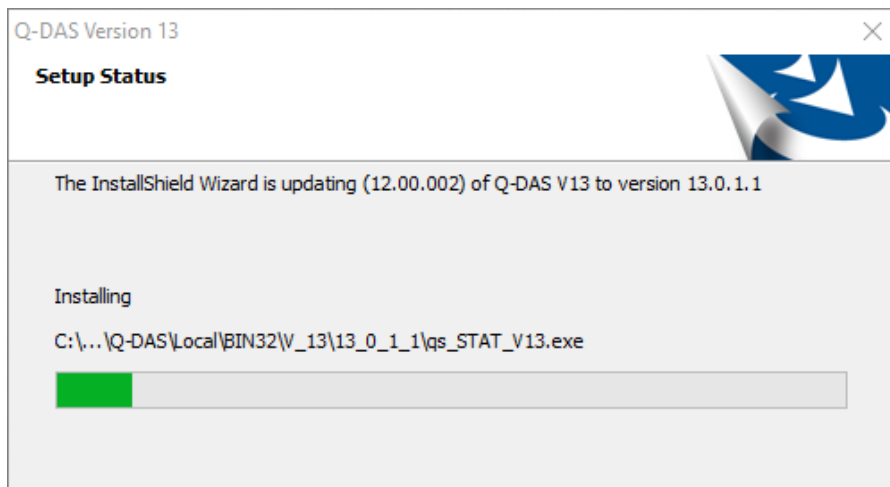


Select the licence file of version 13.



Dateiname: 18169_V13.LIC LIC file (*.LIC)
Öffnen Abbrechen

The installation starts.

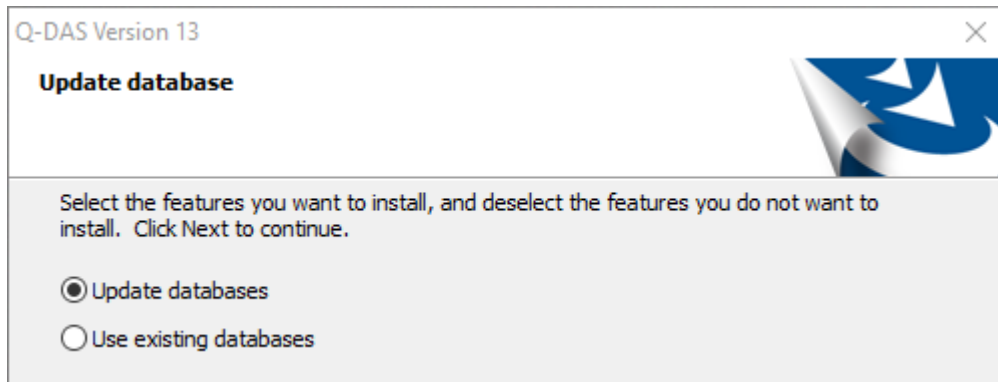


Compared to the server provisioning update, you update all databases when you update the local installation.



The MASTER.INI identifies the database connection, **not** the *product*.INI files!

The first request concerns the databases. You only activate the “Use existing databases” radio button when you update the databases manually later on.



You might need this option e.g. when you apply MSSQL databases in case of a local installation, such as a local MS SQL Express or a central MS SQL database.

Database update – an example

Looking at the MASTER.INI and the Firedac connections you will see that the database connection is still assigned to the consecutive number 1; however, it refers to a MSSQL database.

The connection to the configuration database switched to a different database (Access) that has a new consecutive number.

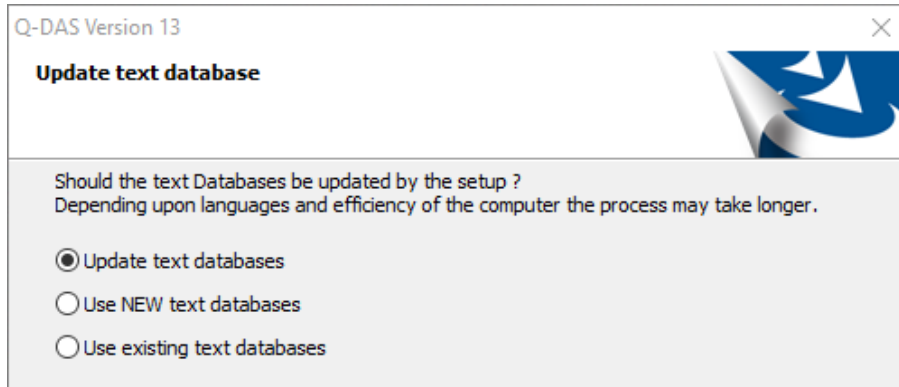
```

[Text-DB]
sys_lang_FDDbConn=FDDbConnStr_Text_001
; Data-DB
sys_data_FDDbConn=FDDbConnStr_Data_001
; Config-DB
sys_config_FDDbConn=FDDbConnStr_Conf_003
; License-DB
sys_config_global_FDDbConn=FDDbConnStr_Conf_002
; Central-DB (Synchron)
sys_rpt_central_FDDbConn=FDDbConnStr_Data_003
;
;
;=====
[FDDbConnections]
FDDbConnStr_Text_001=Name=QDAS_TEXT_001;DriverID=MSAcc;Database=C:\ProgramData\Q-DAS\Local\PLANT\DEFAULT\DATABASES\QDAS_TEXT.MDB;
FDDbConnStr_Data_001=Name=QDAS_DATA_001;DriverID=MSSQL;Server=.;Database=QDAS_DATA;User_Name=qdas;
FDDbConnStr_Conf_001=Name=QDAS_CONF_001;DriverID=MSAcc;Database=C:\ProgramData\Q-DAS\Local\PLANT\DEFAULT\DATABASES\QDAS_CONFIG.MDB;
FDDbConnStr_Conf_002=Name=QDAS_LIC_001;DriverID=MSAcc;Database=C:\ProgramData\Q-DAS\Local\PLANT\DEFAULT\DATABASES\QDAS_LIC.MDB;
FDDbConnStr_Data_002=Name=QDAS_CMM_001;DriverID=MSAcc;Database=C:\ProgramData\Q-DAS\Local\PLANT\DEFAULT\DATABASES\QDAS_CMM.MDB;
FDDbConnStr_Data_003=Name=QDAS_CENTRAL_001;DriverID=MSAcc;Database=C:\ProgramData\Q-DAS\Local\PLANT\DEFAULT\DATABASES\QDAS_DATA.MDB;
FDDbConnStr_Data_004=Name=QDAS_MONI_001;DriverID=MSAcc;Database=C:\ProgramData\Q-DAS\Local\PLANT\DEFAULT\DATABASES\QDAS_MONI.MDB;
FDDbConnStr_Conf_003=Name=config_Station_A;DriverID=MSAcc;Database=C:\ProgramData\Q-DAS\Local\PLANT\DEFAULT\Databases\CONFIG_Station_A.

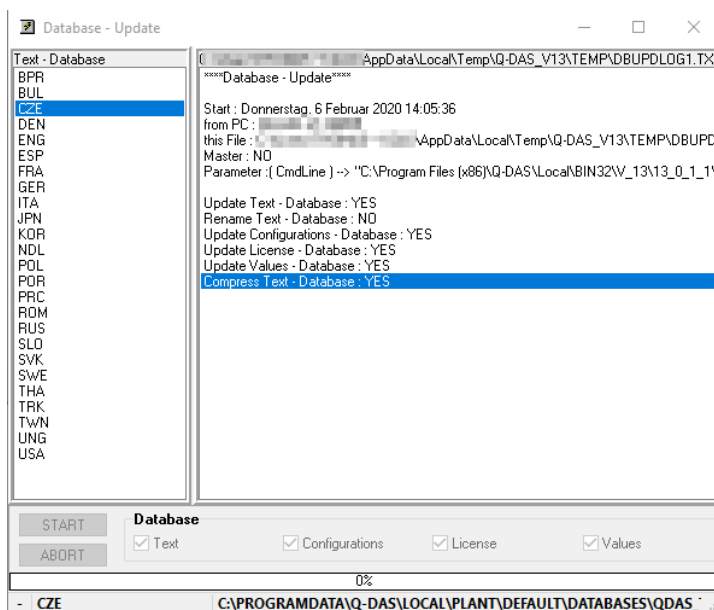
```

After confirming the update of the databases, you are asked about the update of the text database.

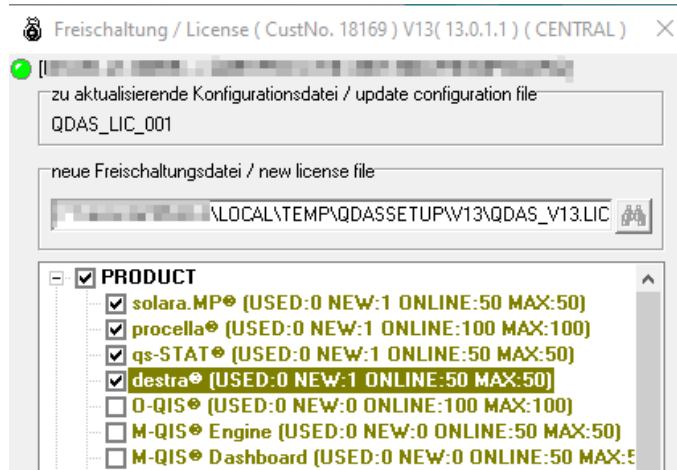
In case you did not create own texts or change existing ones, you may replace the text database.



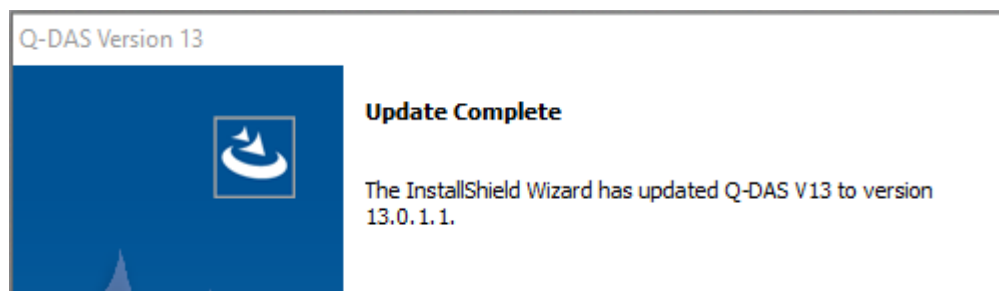
The database update starts now.



Take the last step and decide which products and options you want to be available in the local V13 installation.



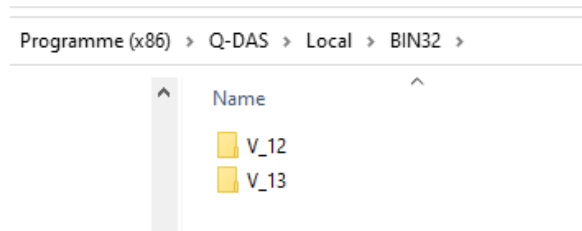
The update is now completed.



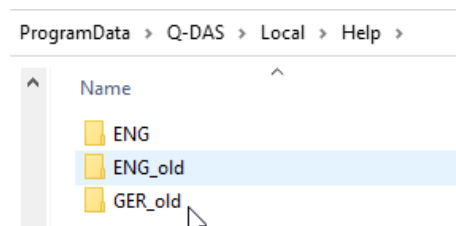
4.1 Modifications on the local directory

For the sake of convenience, the screenshots are based on a 32-bit installation.

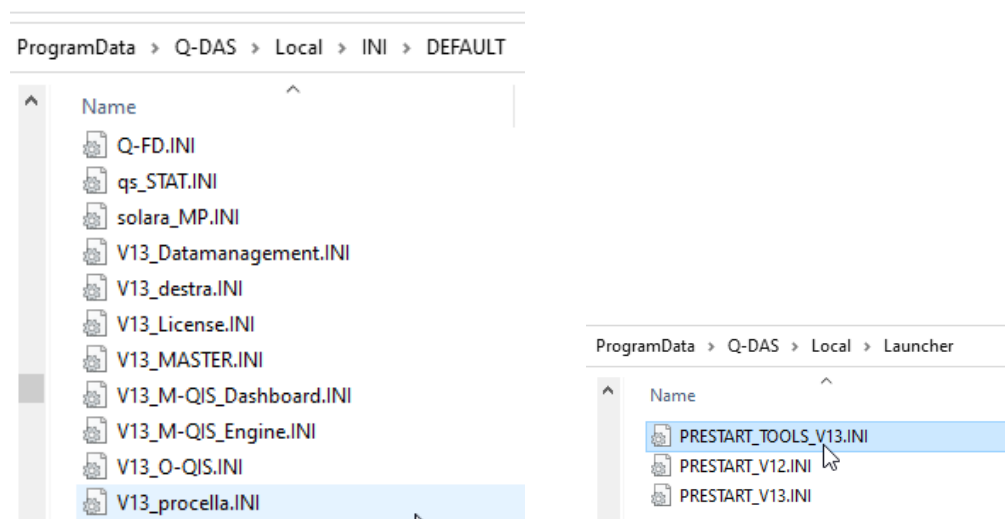
A separate V_13 folder now contains the binary files.



The folders containing the help files of version 12 are renamed and are thus no longer linked to the software. The current program help of version 13 (that is still under construction) is now connected to the software. The new program help of version 13 is available in two languages and provided in the ENG folder. Since the entire program help is going to be restructured, it is still under construction.



The Default folder now includes the INI files and the launcher INI files including the prefix "V13_". Since version 13, an update always applies the INI files of version 12 as a template for the INI files of version 13, only new information are added. The setup thus updates the INI files, i.e. it updates the settings adjusted in version 12.



The existing ...\\Plant\\Default folder was updated. All files indicating that they have not been changed since the installation of version 12, are **overwritten** while updating the software to version 13.

ProgramData > Q-DAS > Local > PLANT > DEFAULT >

Name	Änderun
Buttonbars	06.02.202
CADFiles	06.02.202
Catalog	06.02.202
DATA	06.02.202
DatabaseLinks	06.02.202
Databases	06.02.202
Examples	06.02.202
Graphics	06.02.202
Masks	06.02.202
Monitoring	06.02.202
Others	06.02.202
PDF	06.02.202
Reports	06.02.202

Example

As an example, the following data have been changed while running version 12:

Maske_PC.def

MASKE_LT.DEF	15.08.2018 08:51
MASKE_MO.DEF	28.01.2019 09:56
MASKE_PC.DEF	07.02.2020 17:52
MASKE_PV.DEF	28.01.2019 09:56
MASKE_RB.DEF	15.08.2018 08:51
MASKE_RG.DEF	15.08.2018 08:51

The PC_0010 report has been modified, report PC_0011 is new. All the other reports are still in the condition as supplied.

MO_1020_Characteristics_Statistics_lands...	27.11.2019 14:54
MO_1030_all_Characteristics.def	27.11.2019 14:54
MO_1040_all_Characteristics_5Blocks.def	27.11.2019 14:54
PC_0010_ValueChart.def	07.02.2020 17:51
PC_0011_own_report.def	07.02.2020 17:52
PC_0020_ValueChart_DateTime.def	27.11.2019 14:54
PC_0030_ValueChart_Timeaxis.def	27.11.2019 14:54
PC_0040_ValueChart_Histogram_Probabil...	27.11.2019 14:54
PC_0050_ValueChart_Timeaxis...	27.11.2019 14:54

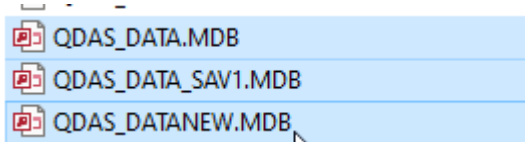
After the update

All customised mask files remain; masks that have not been changed were replaced by the new standard.

 MASKE_LT.DEF	28.01.2020 13:53
 MASKE_MO.DEF	28.01.2020 13:53
 MASKE_PC.DEF	07.02.2020 17:52
 MASKE_PV.DEF	28.01.2020 13:53
 MASKE_RB.DEF	08.01.2020 15:57
 MASKE_RG.DEF	08.01.2020 15:57

Customised report templates remain; report templates that have not been changed were replaced by the new standard.

Databases, however, are an exception. The database update renames the existing database which is now called QDAS_DATA_SAV1.mdb, updated by the QDAS_DATANEW.mdb template of the V13 database. This subsequently leads to QDAS_DATA.mdb, the database that can be applied directly.



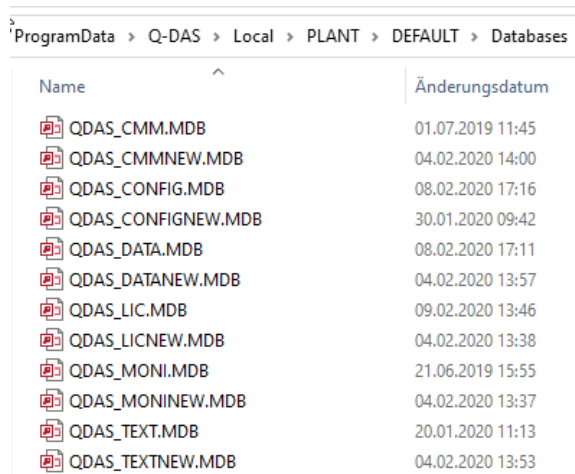
Caution: The CMM buffer database (QDAS_CMM.MDB by default) is **not** subject to the update. You have to update it manually later on.

5 MANUAL UPDATE OF ACCESS DATABASES

Access databases need to be updated manually if

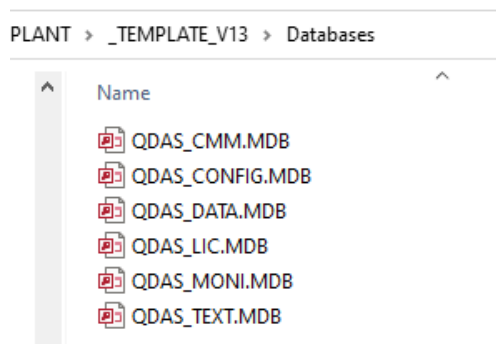
- you apply MCA/CMM Reporting in O-QIS
- you confirmed to update the databases manually during the installation of a local update
- you update the server provisioning (since it does not update any databases).

After completing the installation without updating the databases, the databases are structured as follows in case of a **local installation**.



Name	Änderungsdatum
QDAS_CMM.MDB	01.07.2019 11:45
QDAS_CMMNEW.MDB	04.02.2020 14:00
QDAS_CONFIG.MDB	08.02.2020 17:16
QDAS_CONFIGNEW.MDB	30.01.2020 09:42
QDAS_DATA.MDB	08.02.2020 17:11
QDAS_DATANEW.MDB	04.02.2020 13:57
QDAS_LIC.MDB	09.02.2020 13:46
QDAS_LICNEW.MDB	04.02.2020 13:38
QDAS_MONI.MDB	21.06.2019 15:55
QDAS_MONINNEW.MDB	04.02.2020 13:37
QDAS_TEXT.MDB	20.01.2020 11:13
QDAS_TEXTNEW.MDB	04.02.2020 13:53

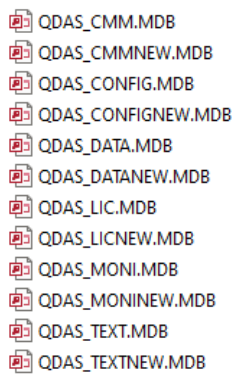
In case of a server provisioning, the new Access databases still have the original name and are stored in the folder ...Share\PLANT_TEMPLATE_V13\Databases.



Name
QDAS_CMM.MDB
QDAS_CONFIG.MDB
QDAS_DATA.MDB
QDAS_LIC.MDB
QDAS_MONI.MDB
QDAS_TEXT.MDB

5.1 Preparing the “Databases” directory

- The naming conventions defined since version 12 have to be kept for databases of version 12.
- All databases to be updated require the respective V13 database in the same directory. The database name includes a NEW.

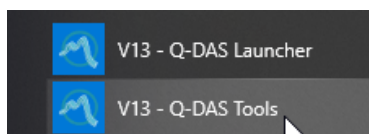


A list of database files in a directory, each with a red icon and a file name:

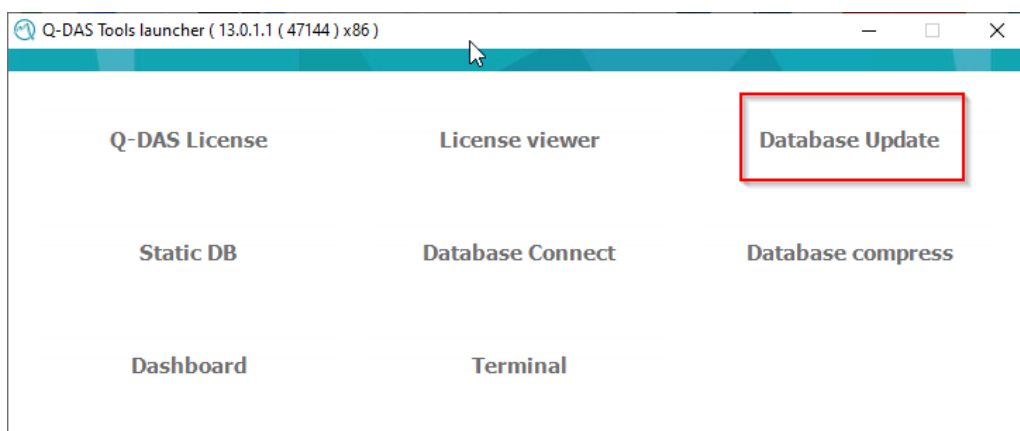
- QDAS_CMM.MDB
- QDAS_CMMNEW.MDB
- QDAS_CONFIG.MDB
- QDAS_CONFIGNEW.MDB
- QDAS_DATA.MDB
- QDAS_DATANEW.MDB
- QDAS_LIC.MDB
- QDAS_LICNEW.MDB
- QDAS_MONI.MDB
- QDAS_MONINNEW.MDB
- QDAS_TEXT.MDB
- QDAS_TEXTNEW.MDB

5.2 Starting the DB update

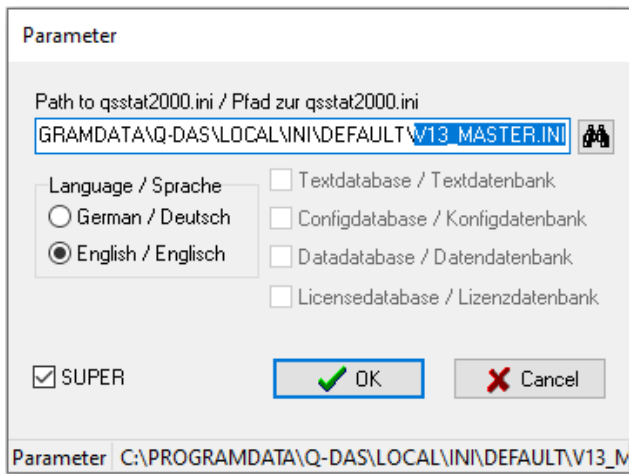
The Tools launcher has been available since version 13. Seit der Version 13.



Use this tool to start the **database update**.



After starting the update, the setup immediately requests the V13_MASTER.INI.



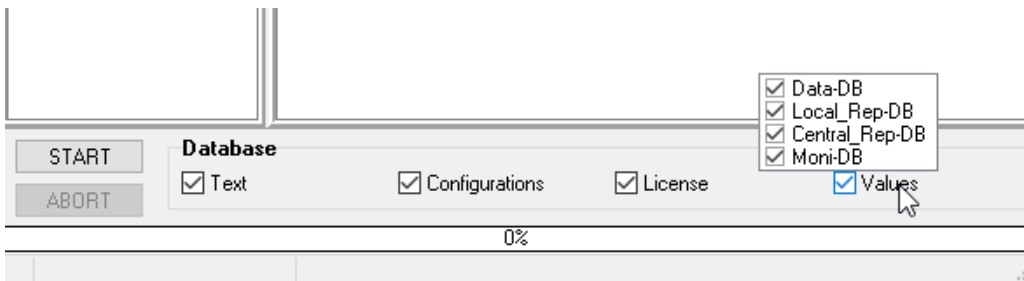
In case of a local installation, the INI is stored in the following folder by default:

C:\ProgramData\Q-DAS\Local\INI

And in case of a server provisioning:

Serverfreigabe\Q-DAS\Share\INI\DEFAULT

Now you have to select the databases you want to update.



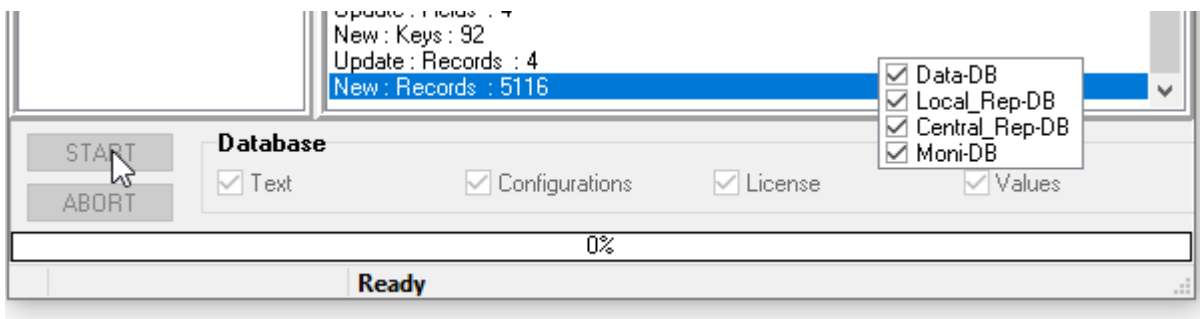
Text	→	QDAS_TEXT.MDB
Configurations	→	QDAS_CONFIG.MDB
License	→	QDAS_LIC.MDB
Values / Data-DB	→	QDAS_DATA.MDB
Values / Local_Rep-DB	→	QDAS_CMM.MDB
Values / Moni-DB	→	QDAS_MONI.MDB
Values / Central_Rep-DB	→	QDAS_DATA.MDB



The Central_Rep-DB refers to the “central” database connection. You only have to select it when you chose a different central DB connection in the project than the one defined by default.

However, you must **not** select the Central_Rep-DB in case of a local workstation used to **synchronise databases**. Central_Rep-DB is a central MSSQL or Oracle database that has to be updated separately from the local installation.

When the database update is completed, the dialogue box shows “Ready”. You may now close this dialogue box.



Dealing with Access databases, all databases will be available three times.

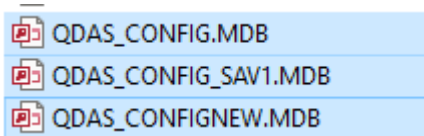


Illustration based on the QDAS_CONFIG database

QDAS_CONFIGNEW.MDB → new original database of version 13

QDAS_CONFIG_SAV1.MDB → original database of version 12 (or older)

QDAS_CONFIG.MDB → New database to be applied – structure of the new database, content of the previous database, new defaults of version 13 added