

# INSTALLATION VERSION 13 CONCURRENT NETWORK – SERVER PROVISIONING

87298374 0987298374982739  
8470 2 **Q-DBM** 7 1545 82138 12  
7198723987 987239 98729872  
**PROCELLA** 234 154 13 544 565  
9872 2719827 7 27198723987  
45 8912 687723 **VIDARA** 27198  
21245 666 1214432 329 **O-QIS**  
928 234 345 344 4718723987  
0187309 445 455 4877298374  
**M-QIS DASHBOARD** 772728498  
81 4981 **DESTRA** 918 2589 23  
59 **QS-STAT** 49814981 45598  
**M-QIS ENGINE** 49983 259 1547  
7487 29837409872 98374982  
73984702 **SOLARA.MP** 987349  
9283 120 38 485 0 2 38 49081



KNOW  
YOUR  
STATISTICS



# CONTENTS

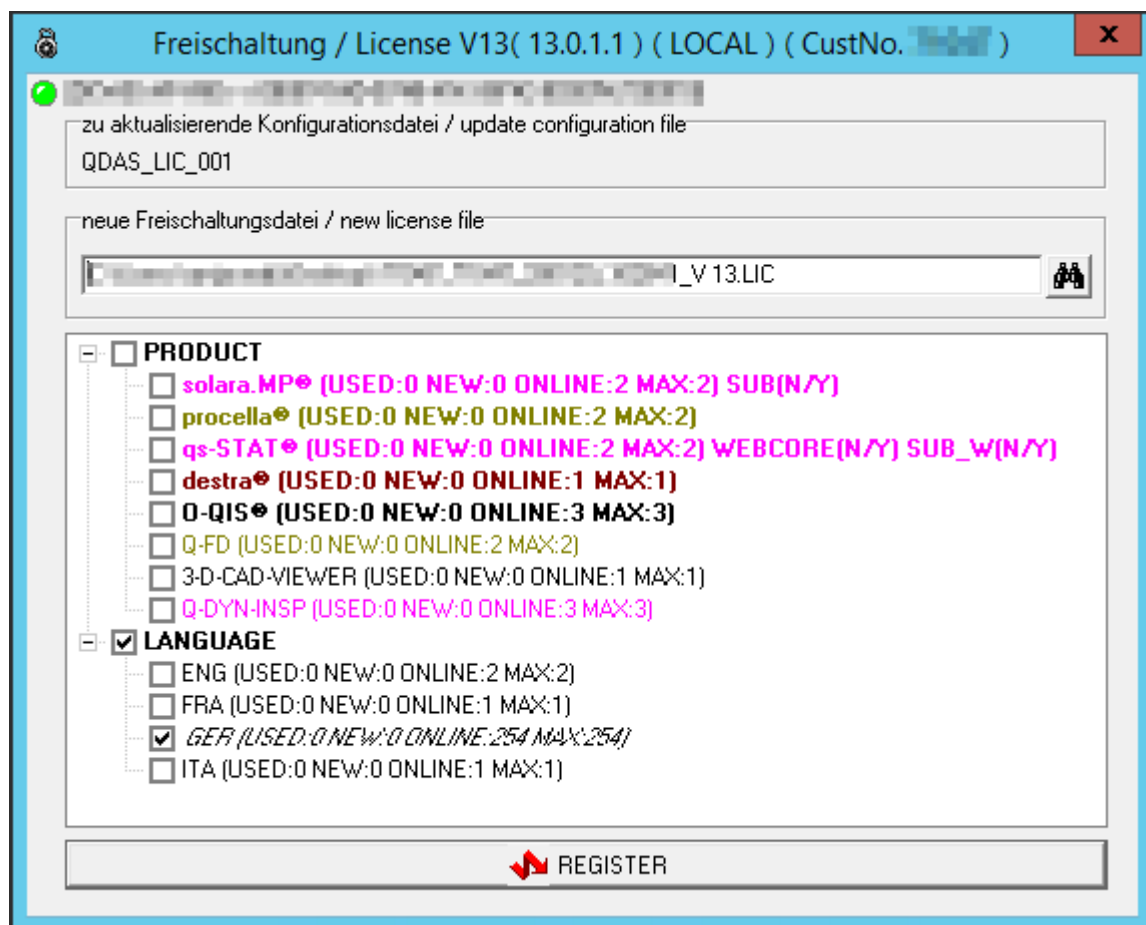
- 1 Preface – Different products/options..... 3**
- 2 Directory structure ..... 5**
  - 2.1 Program files ..... 5
  - 2.2 Program data..... 6
- 3 Planning server Provisioning ..... 8**
  - 3.1 Preparing the installation directory ..... 8
    - 3.1.1 Defining users or user groups ..... 9
    - 3.1.2 Creating an installation directory ..... 9
    - 3.1.3 Sharing the installation directory ..... 10
- 4 Starting server provisioning..... 12**
  - 4.1 Starting the installation ..... 12
  - 4.2 Licence agreement..... 13
  - 4.3 Selecting licences..... 13
  - 4.4 Installation type ..... 14
  - 4.5 Selecting the architecture ..... 15
  - 4.6 Previously installed Q-DAS versions ..... 15
  - 4.7 Target directory ..... 16
    - 4.7.1 Changing the target directory ..... 17
  - 4.8 Selecting features..... 18
  - 4.9 Activating additional data fields ..... 19
  - 4.10 Support email address..... 20
  - 4.11 Redistributables..... 20
  - 4.12 SQL Server Native Client ..... 21
  - 4.13 Starting the installation ..... 21
  - 4.14 Selecting the products to be installed ..... 22
  - 4.15 Online registration ..... 23
  - 4.16 End of the installation ..... 24
  - 4.17 Launcher ..... 24

# 1 PREFACE – DIFFERENT PRODUCTS/OPTIONS

There are different installation types available for products and options. Server provisioning always requires the setup whereas you use the licence manager to add products, options or languages.

The following window shows that you identify products and options based on their notation. Products are displayed in bold letters. Various colours indicate different types of licences.

- Black  
Products and options that are not time-limited.
- Yellow  
Time-limited test licences
- Red  
Time-limited test licences having already expired.
- Pink  
"Subscription" licences, i.e. time-limited licences that are based on a specific subscription



Depending on the licence type you purchased or installed, the setup shows even additional information besides products and options.

- **Used**  
Shows the number of licences that have already been installed or are already in use.
- **New**  
Shows the number of currently selected licences. After completing the registration, this option always shows the same content as “used”.
- **Online**  
Shows the number of licences available for registration. In case you are not connected to the Internet at the time of registration, the setup does not show the number but “n.a.”.
- **Max**  
Shows the number of licences available in the LIC file.
- **Webcore (installed/contained in license file)**  
The purchased product includes the option to start this very product even as a web product. The first entry in the brackets indicates whether the product has already been registered, the second one shows whether the web core licence is already contained in the licence file.
- **SUB**  
(installed/contained in license file) – subscription desktop products and options  
Specifies whether the purchased licence is a subscription-based (time-limited) licence that needs to be registered. The first entry in the brackets indicates whether the product has already been registered, the second one shows whether the subscription licence is already contained in the licence file.
- **SUB\_W**  
(installed/contained in license file) - subscription web products and options  
Specifies whether the purchased licence is a subscription-based (time-limited) web core licence that needs to be registered. The first entry in the brackets indicates whether the product has already been registered, the second one shows whether the subscription web core licence is already contained in the licence file.
- **TL / TL\_W / DEMO**  
Specify whether the licence is a subscription-based (time-limited) licence, a subscription-based (time-limited) web core licences or a licence set to the demo mode. IN case of time-limited licences, the setup also shows the number of days left until the licence expires.

## 2 DIRECTORY STRUCTURE

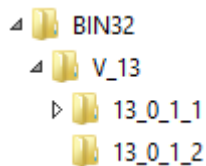
Since the release of version 12, the installation of Q-DAS applications is based on a new installation philosophy. Depending on the installation type, the software creates different directories for program files and uses different sub-directories for program data. This chapter deals with the basic differences of the three different installation types.

### 2.1 Program files

The structure of program files is strictly based on binary data. In case of server provisioning, they are provided as a 32-bit and a 64-bit version. If you use a local installation or roll out clients, you define the respective version during the installation.

- Server provisioning applies UNC paths. The target directories are as follows.  
32-bit files: `\\.\Q-DAS\Share\BIN32 ..`  
64-bit files: `\\.\Q-DAS\Share\BIN64 ..`
- When you defined the storage location of local program files in a client installation, the software applies the following directories. The default directory depends on the respective architecture of the operating system.  
32-bit operating system: `..\Program Files (x86)\Q-DAS\CLIENT ..`  
64-bit operating system: `..\Program Files\Q-DAS\CLIENT ..`
- Based on a local installation, the default directory depends on the operating system.  
32-bit operating system: `..\Program Files (x86)\Q-DAS\Local ..`  
64-bit operating system: `..\Program Files\Q-DAS\Local ..`

The BIN32/BIN64 directories each contain a single sub-directory for each minor release or trial version. This sub-directory includes the respective version.



## 2.2 Program data

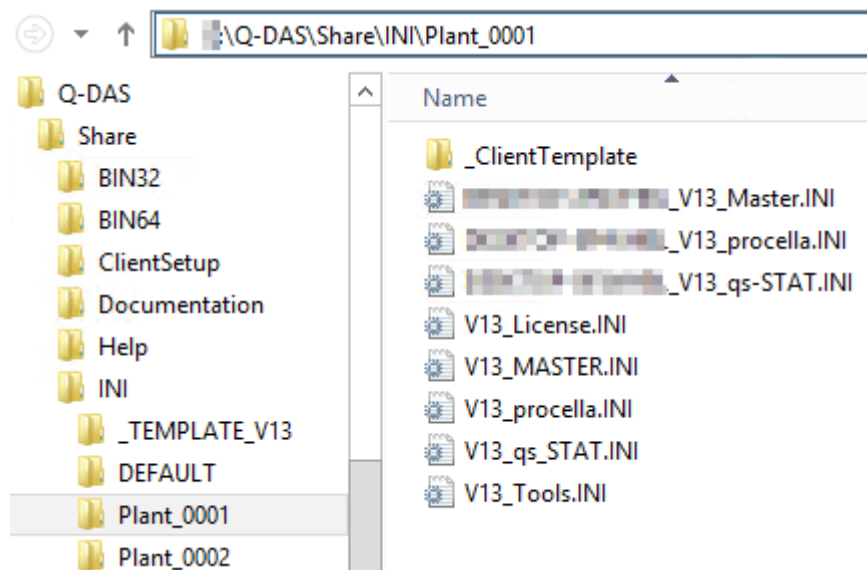
The structure of the directories is as follows.

"Share" in case of server provisioning	"Client" in case of a client installation	"Local" in case of a local installation
<ul style="list-style-type: none"> <li>Q-DAS           <ul style="list-style-type: none"> <li>Share               <ul style="list-style-type: none"> <li>BIN32</li> <li>BIN64</li> <li>ClientSetup</li> <li>Documentation</li> <li>Help</li> <li>INI</li> <li>Launcher</li> </ul> </li> <li>PLANT               <ul style="list-style-type: none"> <li>_TEMPLATE_V13</li> </ul> </li> <li>DEFAULT               <ul style="list-style-type: none"> <li>Buttonbars</li> <li>CADFiles</li> <li>Catalog</li> <li>ComClient</li> <li>DATA</li> <li>DatabaseLinks</li> <li>Databases</li> <li>Examples</li> <li>Graphics</li> <li>Masks</li> <li>Monitoring</li> <li>Others</li> <li>PDF</li> <li>Reports</li> <li>SAP</li> <li>Scripts</li> <li>Web</li> </ul> </li> </ul> </li> </ul>	<p>A client installation normally applies the server directories. In case you defined the storage location for local files when you use a client installation, the software applies the following directories to store program data, e.g. local text databases.</p> <ul style="list-style-type: none"> <li>Q-DAS           <ul style="list-style-type: none"> <li>Client               <ul style="list-style-type: none"> <li>PLANT                   <ul style="list-style-type: none"> <li>DEFAULT</li> </ul> </li> </ul> </li> </ul> </li> </ul>	<ul style="list-style-type: none"> <li>Q-DAS           <ul style="list-style-type: none"> <li>Local               <ul style="list-style-type: none"> <li>Documentation</li> <li>Help</li> <li>INI</li> <li>Launcher</li> </ul> </li> <li>PLANT               <ul style="list-style-type: none"> <li>DEFAULT                   <ul style="list-style-type: none"> <li>Buttonbars</li> <li>CADFiles</li> <li>Catalog</li> <li>DATA</li> <li>DatabaseLinks</li> <li>Databases</li> <li>Examples</li> <li>Graphics</li> <li>Masks</li> <li>Monitoring</li> <li>Others</li> <li>PDF</li> <li>Reports</li> <li>SAP</li> <li>Scripts</li> <li>Web</li> </ul> </li> </ul> </li> </ul> </li> </ul>

## INI files

The INI directory contains all INI files for the respective product start when you apply a local installation or server provisioning.

Server-client provisioning provides the INI files of a specific plant in the respective sub-directory. The client INI files are also stored on the server and the file name gets the respective client Windows computer name as a prefix.



## Plant directory

The plant directory includes configuration files and different examples, i.e. basically all files that a customer is allowed to change. As an example, these are masks, case studies, reports, catalogues, various storage directories and many more.

The structure available for server-client provisioning was prepared in a way that you may create several plants in parallel. This structure is reasonable in a WTS or Citrix environment. We recommend you take part in a fee-based workshop with the Q-DAS project team to create a structure meeting your individual needs. For reasons of performance, we do not recommend you access the network of a different location based on a standard server-client solution.

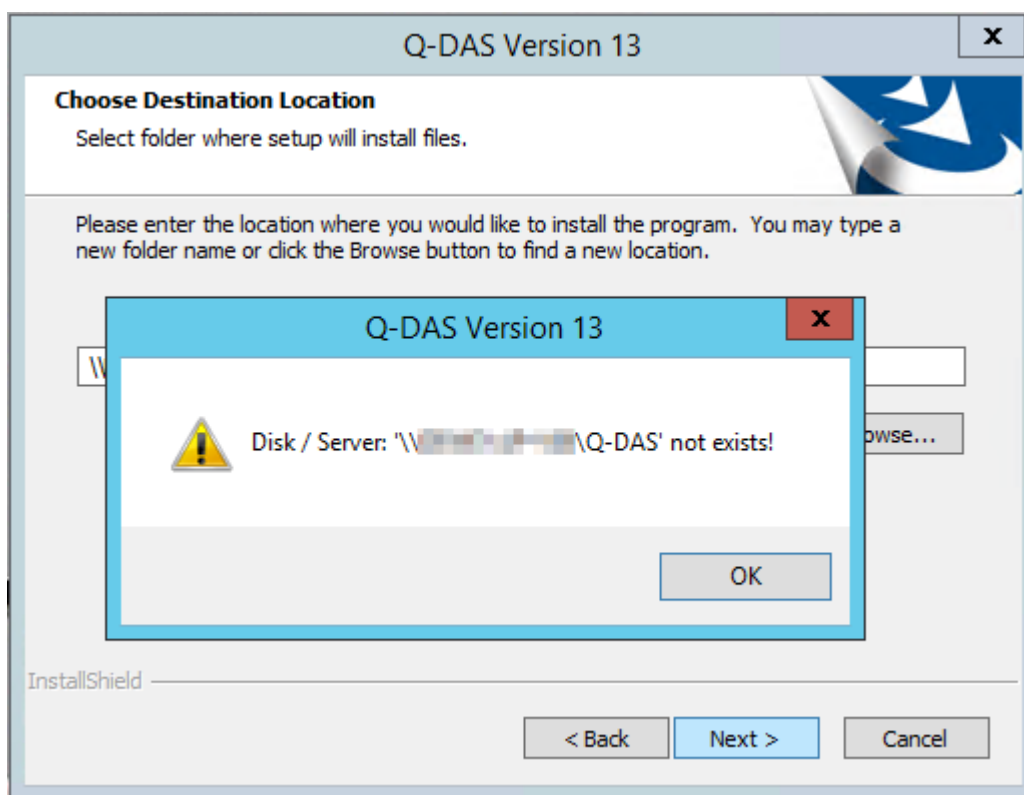
Please inform your Q-DAS contact person or send an email to [info.qdas.mi@hexagon.com](mailto:info.qdas.mi@hexagon.com) when you want to define the structure and apply the template (\_TEMPLATE\_V13).

## 3 PLANNING SERVER PROVISIONING

### 3.1 Preparing the installation directory

Since version 13, the new Q-DAS installation philosophy links licences to the databases applied during the installation. In order that the encoded databases are assigned to the correct “key”, you have to define how you want to use the Q-DAS application before you start the installation. We recommend you frame an authorisation concept.

When you start the concurrent network installation for server provisioning, the setup requires an available and shared directory to store the Q-DAS files. In case such a directory is not available or shared, the software shows the following message.





### 3.1.1 Defining users or user groups

In order to be able to configure Windows users, you need to be acquainted with Windows servers, especially with Active Directory (AD) groups and you have to know the respective authorisation concept.

The Windows server you use to install and execute Q-DAS applications and to distribute and apply clients needs Windows users having the right to access Q-DAS applications.

The Windows users supposed to work with Q-DAS software shall be available on the Windows server according to the respective authorisation concept. Ideally, you combine the users in user groups.

Applying user groups, please consider adding the Windows user of the IT administrator to the “Q-DAS” user groups.



More information about Active Directory (AD) group rights and case studies illustrating various access rights are available at <https://www.q-das.com/en/service/support-hotline#faqs>

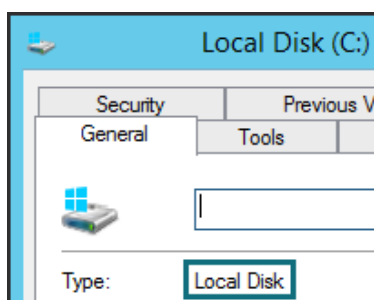


You need “full control” to start the Q-DAS setup or at least the right to “change”. You configure the access rights when you share directories.

### 3.1.2 Creating an installation directory

Before you start the Q-DAS setup, ensure that the target directory is available. The target directory proposed by the setup is a Q-DAS directory on the local disk of the Windows server (<server drive>\Q-DAS). In case you want to use a different directory for the installation, please consider the following aspects.

- The target directory is already available on a local disk or needs to be created there. It is not recommended you use a network drive.

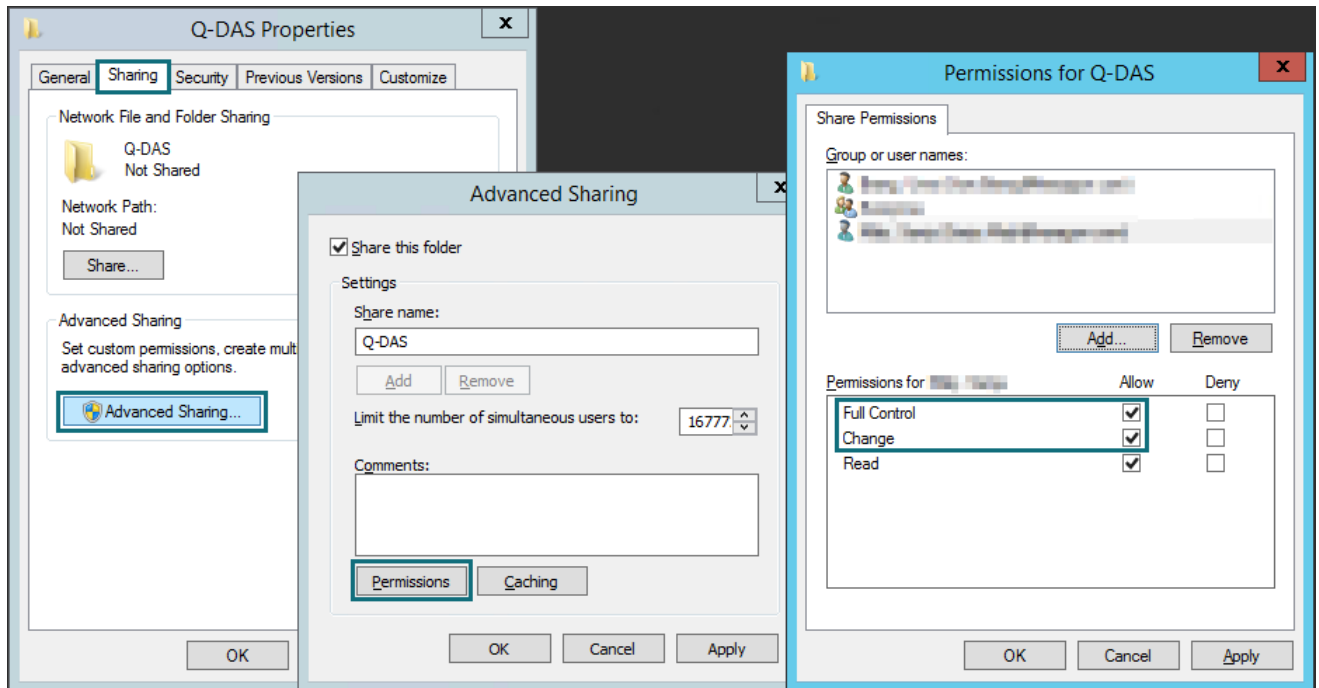


- It is recommended you use flat directory hierarchies, such as X:\Q-DAS or X:\SHARE.

### 3.1.3 Sharing the installation directory

To start the Q-DAS setup, you have to share the target directory. Open the Windows Explorer, right-click on the target directory and select “Properties” from the context menu.

Click on “Advanced Sharing” in the “Sharing” tab to share the directory and to define the share permissions of Active Directory users or groups. You need “full control” to start the Q-DAS setup or at least the permission to “change”.



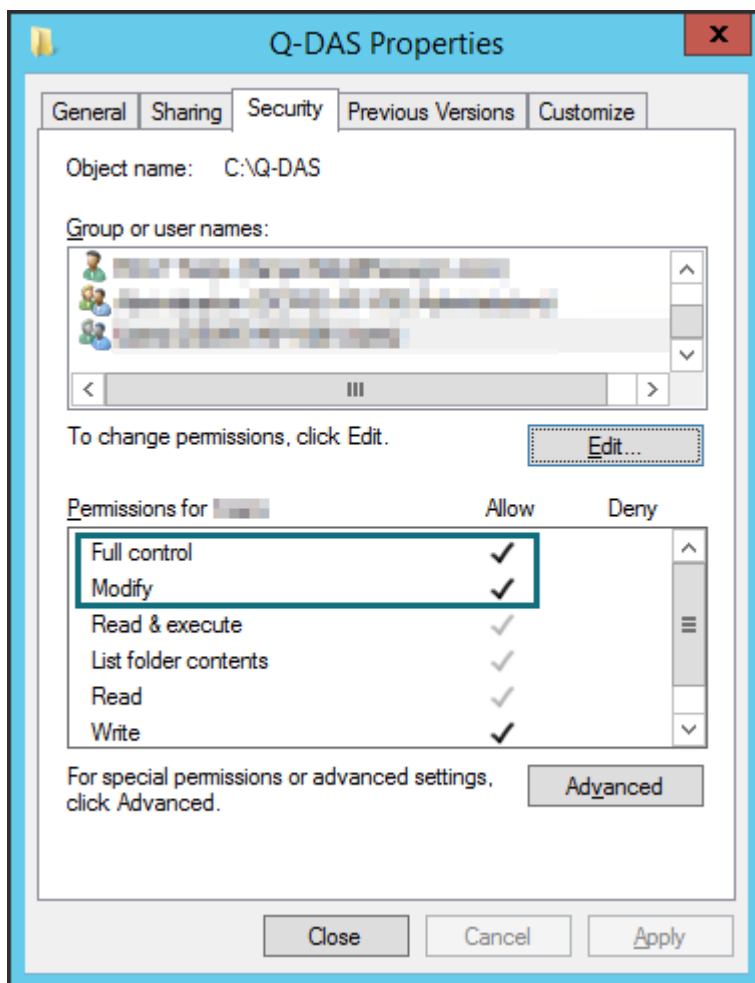
During the installation, the setup uses the UNC paths followed by the share name, e.g.

- by specifying the server name followed by the share name
- by specifying the full name of the domain (FQDN) followed by the share name.

IN addition to the share configuration, you have to define the security permissions. Click on the “Security” tab and configure the Active Directory users or groups according to your authorisation concept. Q-DAS users require “full control” or at least the permission to “modify”.



More information about Active Directory (AD) group rights and case studies illustrating various access rights are available online at <https://www.q-das.com/en/service/support-hotline#faqs|||>.



## 4 STARTING SERVER PROVISIONING

### 4.1 Starting the installation

Insert the DVD into the drive and the start dialogue box opens automatically.

IN case it does not open automatically, proceed as follows.

- Open the respective drive in the Windows Explorer and double-click on SETUP\_V13.exe to execute the file
- or
- click on “Start” and “Execute”,
- enter the drive letter of the DVD drive in the input field and add the file name SETUP\_V13.exe.

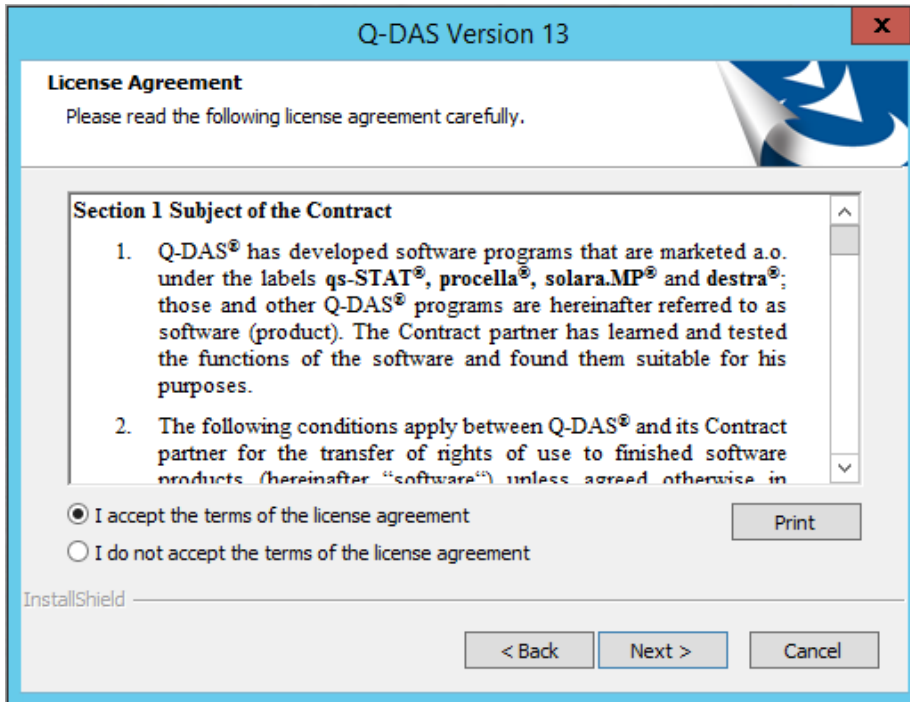
Example: *F:\SETUP\_V13.exe*



Click "Next >" to start the installation of version 13.

## 4.2 Licence agreement

You accept the terms by activating the "I accept the terms of the license agreement" radio button. The "Next >" button is enabled.

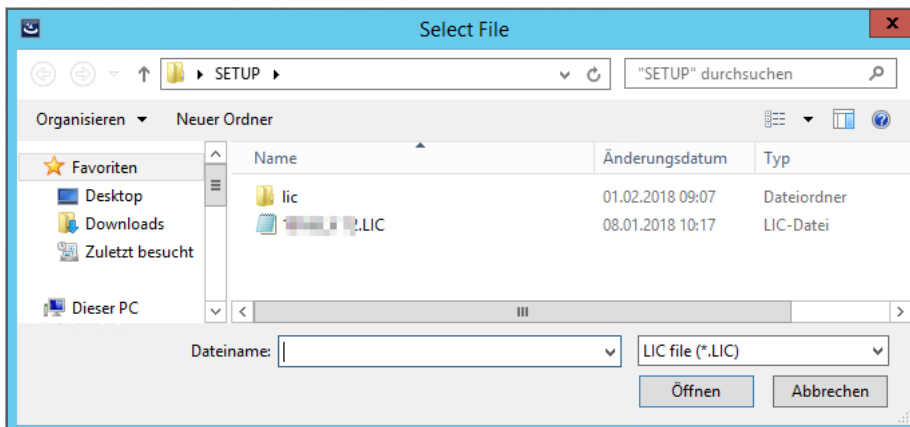


Click "Next >" to continue the installation.

## 4.3 Selecting licences

Select your licence file (\*.LIC) of version 13.

It is available on your DVD by default (or has been sent to you by email).



Select the respective \*.LIC file and click "Open".

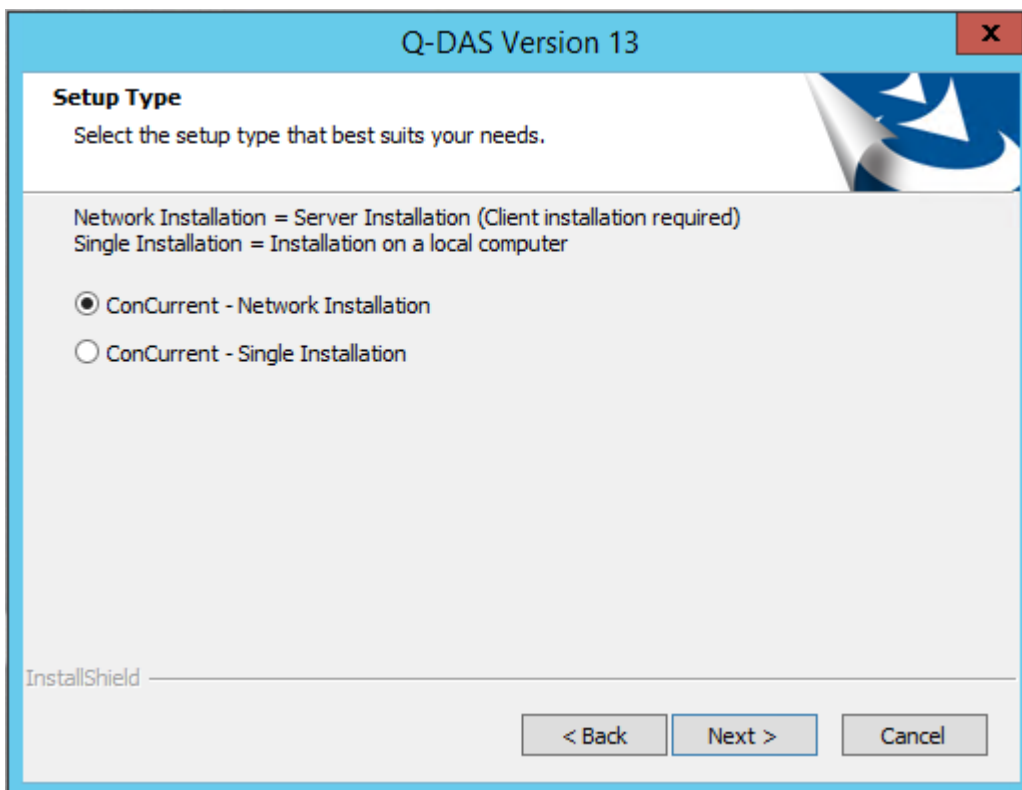
## 4.4 Installation type

Select the installation type

ConCurrent – Network Installation

= Installation provided on the server, subsequent client installation on any number of computers included; however, the number of simultaneous user logins is restricted to the number of licences. Additional information about network installations are available at <https://www.q-das.com/en/service/support-hotline#faqs|||>.

ConCurrent – Single Installation. A separate document describes the local single installation.



Please consider that you may only apply a **single installation type** on a computer. The first time you start the setup, you define the installation type for this computer/server.

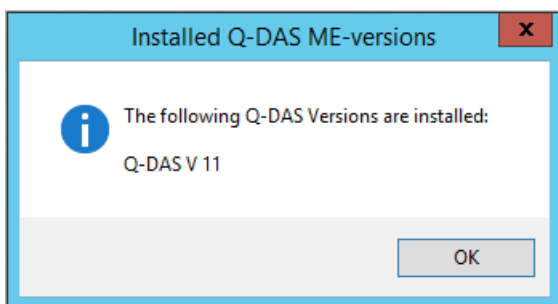
Select the desired installation type and click "Next >".

## 4.5 Selecting the architecture

Compared to a local single installation or a client installation, server provisioning always installs the 32-bit and 64-bit versions. You may select the respective version in each subsequent client installation. A separate document describes the client installation.

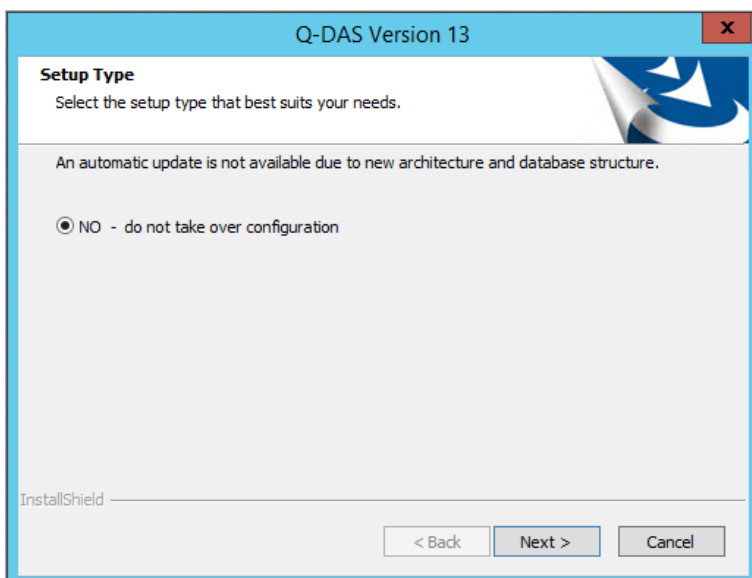
## 4.6 Previously installed Q-DAS versions

In case you have already installed some Q-DAS versions on your computer, the following message appears indicating the installed versions.



Click "OK" to continue the installation.

You cannot transfer any configurations (databases, input screen masks, reports, etc.) automatically from previous version since the system structure and database structures of version 13 changed. Additional information about updating previous versions are available at <https://www.q-das.com/en/service/support-hotline#faqs>

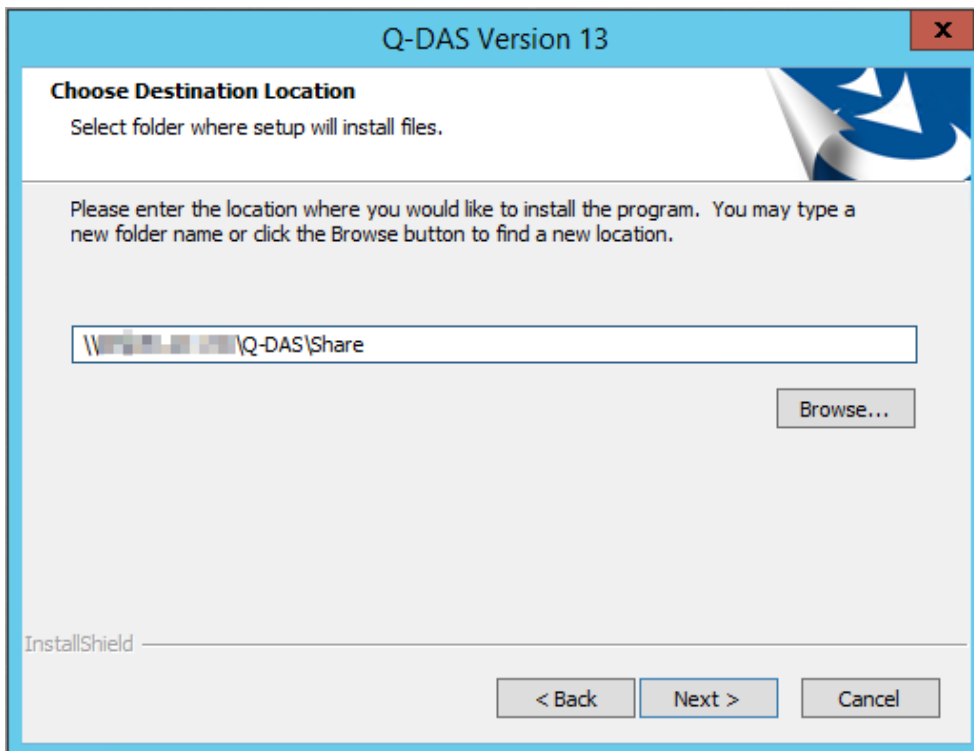


Click "Next >" to start the installation of version 13.

## 4.7 Target directory

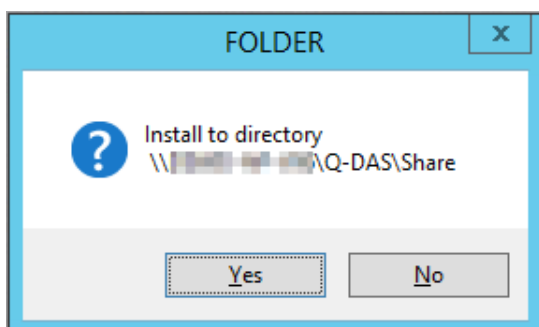
Select the target directory for the installation of Q-DAS version 13. As described in the “Preparing the installation directory” chapter, you created and shared this directory and configured the required user rights.

The target directory the setup provides is the local drive of the Windows Server followed by “Q-DAS” (\\<server drive>\Q-DAS).



When you want to apply the target directory, click “Next >”.

A confirmation prompt opens.



To select a different target directory, click “No”.

Confirm the selected target directory by clicking “Yes” and the installation continues.



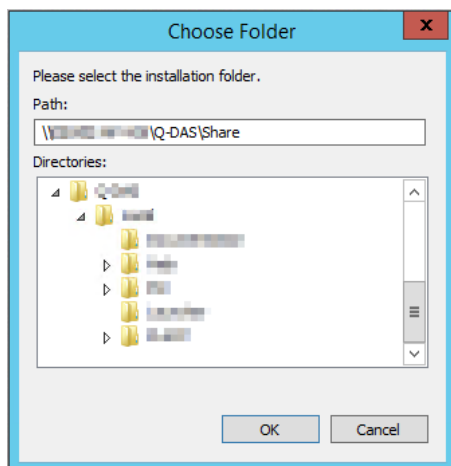
## 4.7.1 Changing the target directory

You may change the target directory by entering the path directly in the input field or by clicking “Browse”. We recommend you keep the default settings, i.e. the path the system provides.

Since version 13, a network installation requires the share name of the UNC path, e.g.

- Specification of the server and the share  
\\<server name>\<share>
- Specification of the entire domain name (FQDN) and the share  
\\<FQDN>\<share>

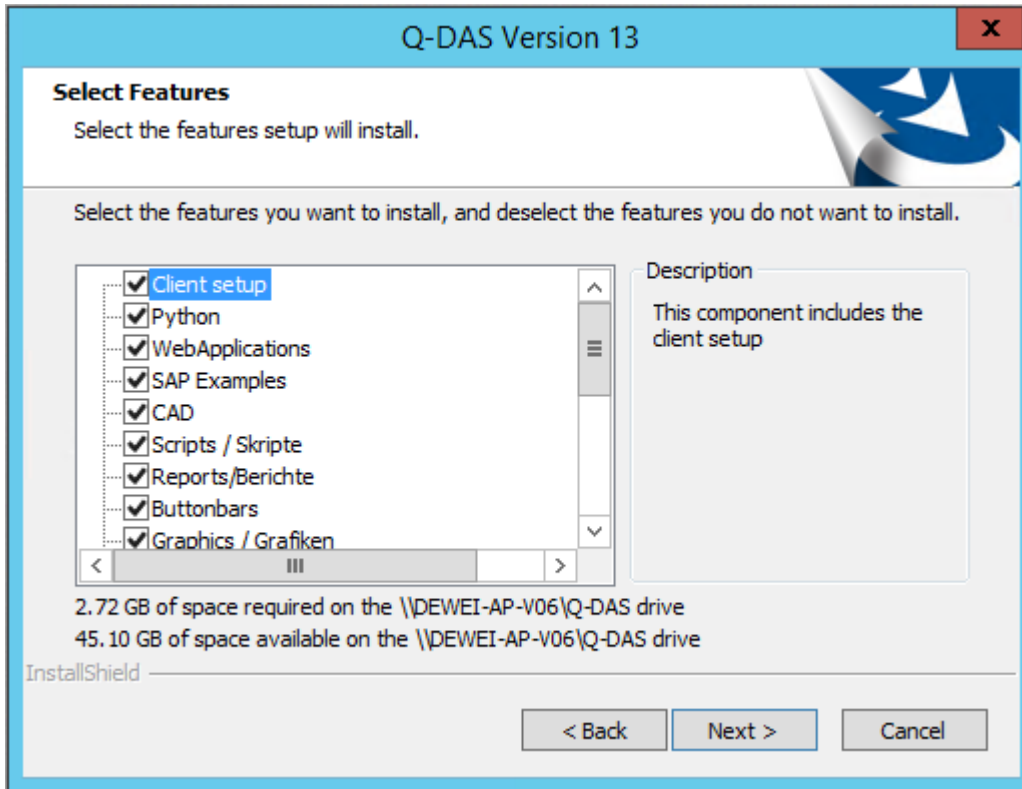
You may enter the new path directly or select the respective directory.



Click “OK”.

## 4.8 Selecting features

Select the single features you want to install.

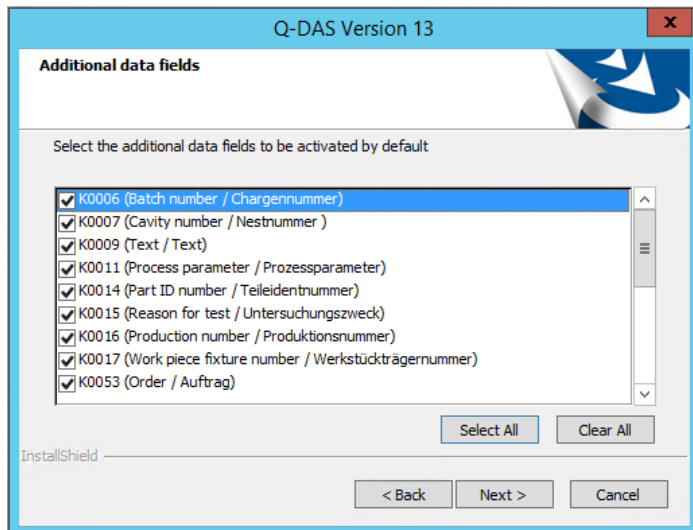


We recommend you keep the default settings (all features enabled).

Select the desired features and click "Next >"

## 4.9 Activating additional data fields

Activate the additional data fields you require in the software. Any additional data field you deactivate here are indicated as “disabled” in the INI file.



The following additional data fields are enabled by default.

K0006 = batch number/ID number

K0007 = cavity number/spindle number

K0009 = text

K0011 = process parameter

K0014 = part ID number

K0015 = reason for test

K0016 = production number

K0017 = work piece fixture number

K0053 = order number



You activate these fields to provide the additional data fields in the software. You might still have to add these fields in the databases! Find more information about additional data fields in the database in the “Error messages, K00xx cannot be written” document at <https://www.q-das.com/en/service/support-hotline#faqs|||>.



Since version 13, you may define the activated additional data based on sets of additional data. Our homepage offers the “Sets of additional data” document describing how to change the subsequently for the entire plant after the installation. <https://www.q-das.com/en/service/support-hotline#faqs|||>.

For reasons for performance and database size we recommend you only activate the additional data fields you really need.

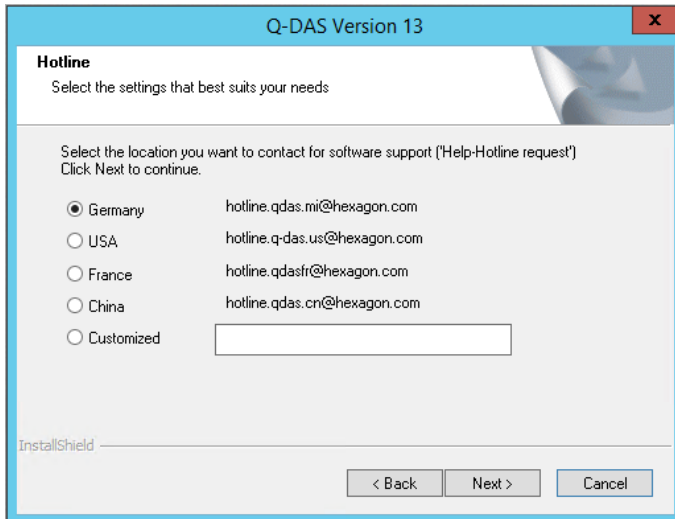
When you want to activate all additional data fields, click “Select All”.

In case you want to disable all additional data fields, click “Clear All”.

Activate the desired additional data fields and click “Next >”.

## 4.10 Support email address

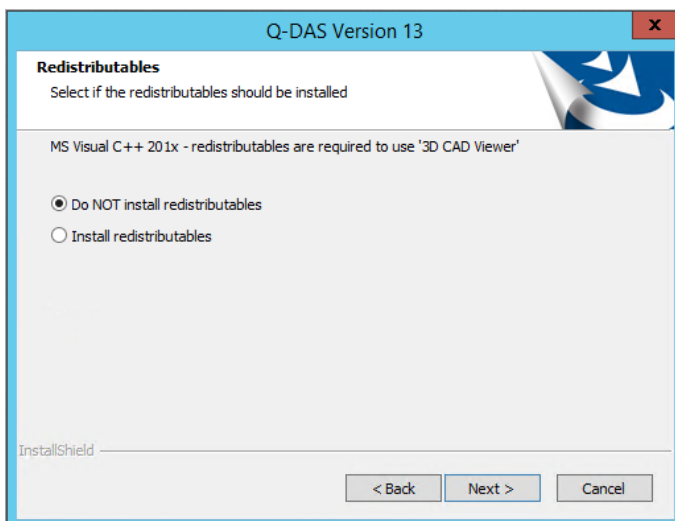
Specify the email address you want to contact for software support.



Select the respective option and click "Next >".

## 4.11 Redistributables

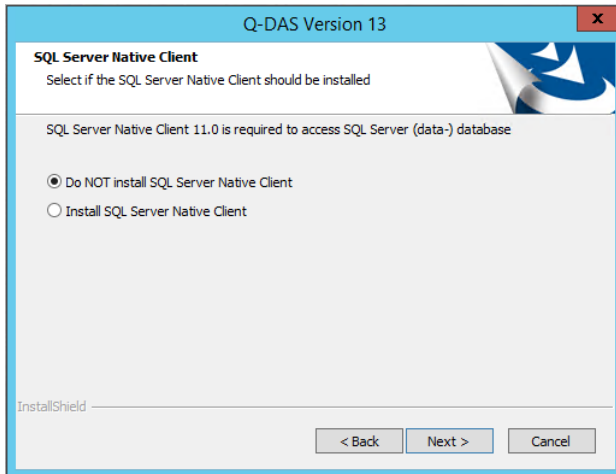
When you want to use Q-DAS 3D-CAD-Viewer, you have to install Microsoft Visual Studio Redistributables. Select whether you want to install them automatically.



Choose the respective option and click "Next >".

## 4.12 SQL Server Native Client

Applying SQL databases requires access to the data of the SQL Server Native Client. Since version 12.0.2.1, this client is provided by default. In case the SQL Server Native Client is not available yet on the respective computer, you select whether you want to install it automatically.

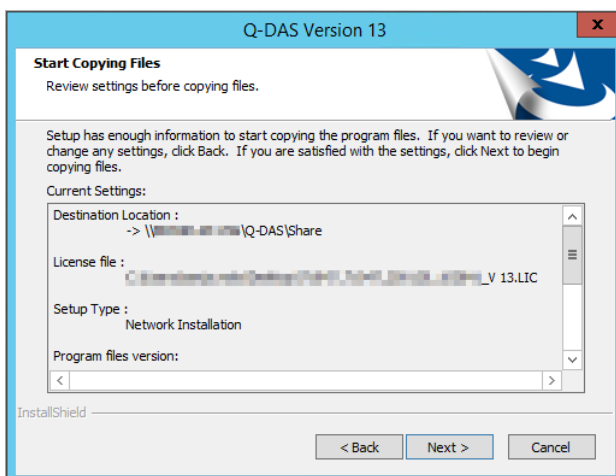


Choose the respective option and click "Next >".

## 4.13 Starting the installation

A preview shows the settings you adjusted. To change these settings, click the "< Back" button until you see the settings you want to readjust.

A network installation generally provides you with the 32-bit and the 64-bit variants. All the settings you adjusted for the installation are summarised as "x86" (32-bit) under "Program files version".



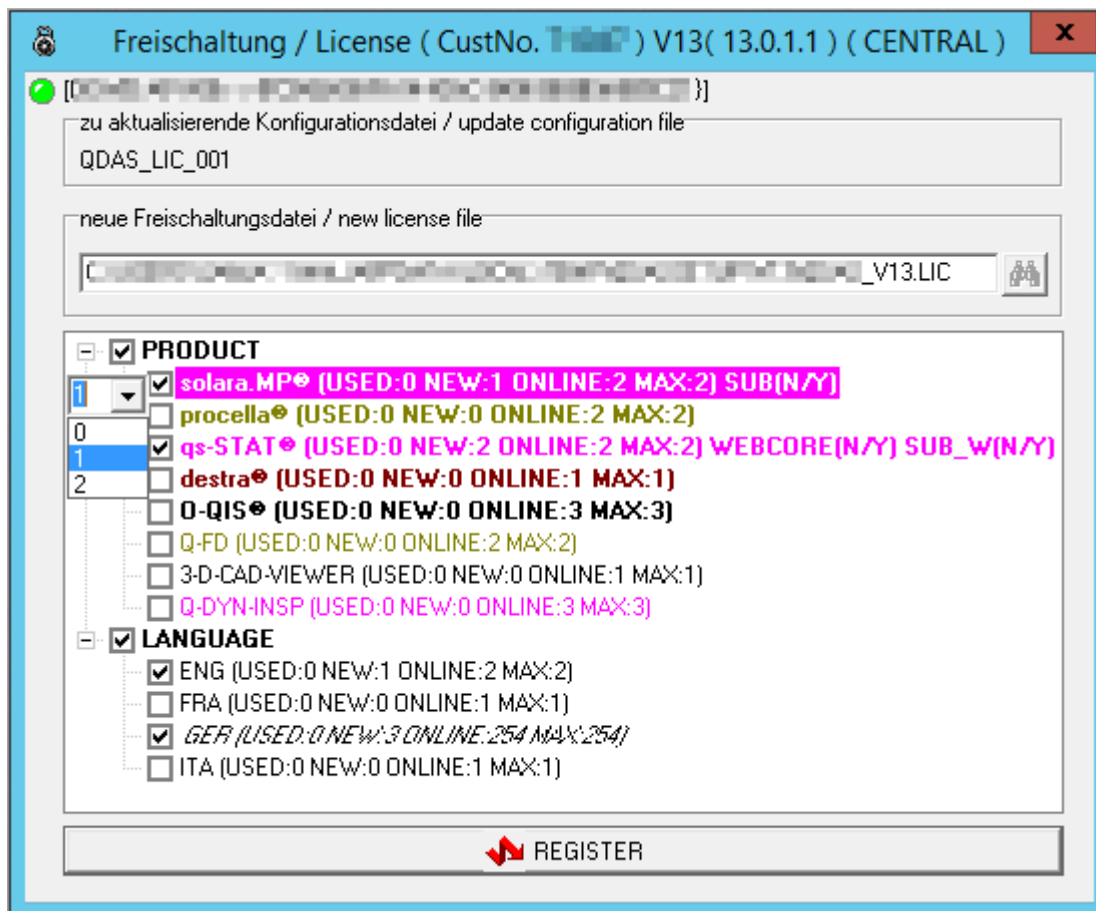
Start the installation by clicking "Next >".

## 4.14 Selecting the products to be installed

Applying a network installation, you may specify the number of licences.

All products, options and languages are disabled by default. Activate the products/options/languages you want to install and right-click on the activated product/option/language. A pull-down menu opens on the left-hand side. Use it to define the number of licences.

“NEW” indicates the specified number of licences (in this case solara.MP 1 of 2 licences). Enable the respective products/options/languages and, if required, the number of licences. Confirm the installation by clicking “OK”.



In this example, you installed qs-STAT (2 subscription-based licences including a web core licence) and solara.MP (one of two subscription-based licences), German as default language and English as an additional language. Please consider that you cannot change the number of licences for the default language (in this case German “GER”). The number is determined automatically.

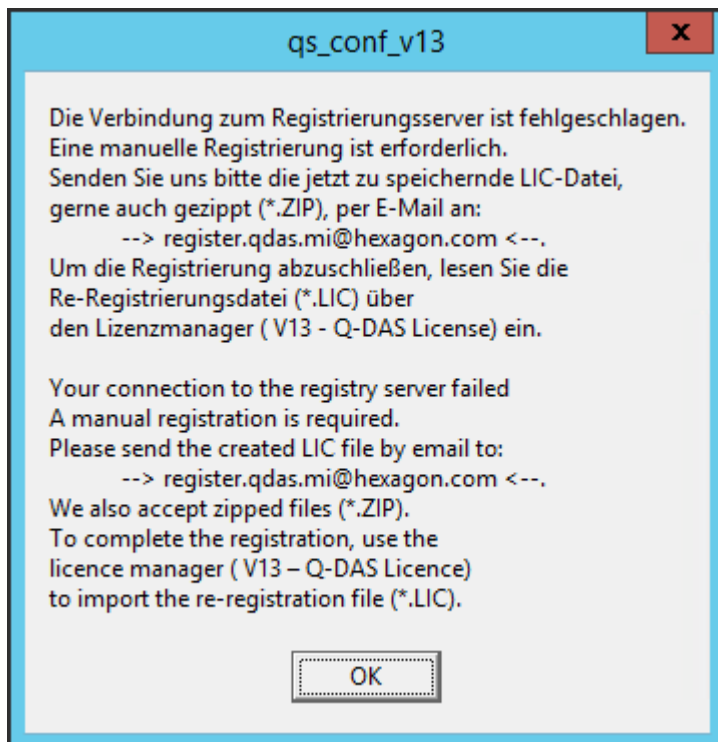
Uninstall an option by unchecking the respective box or set the number of licences to “0” in the pull-down menu.

## 4.15 Online registration

The online registration starts after you installed the products successfully.

In case you are connected to the Internet during the installation and your Firewall does not block the registration, the online registration runs automatically.

IN case you are not connected to the Internet during the installation or there are not any licences available, you are required to register the software manually. The following dialogue box opens.



Without any valid registration, the full functional range of the software will only be available to you for 30 days. You have to register your software subsequently in this period; otherwise, you will only have access to a trial version.

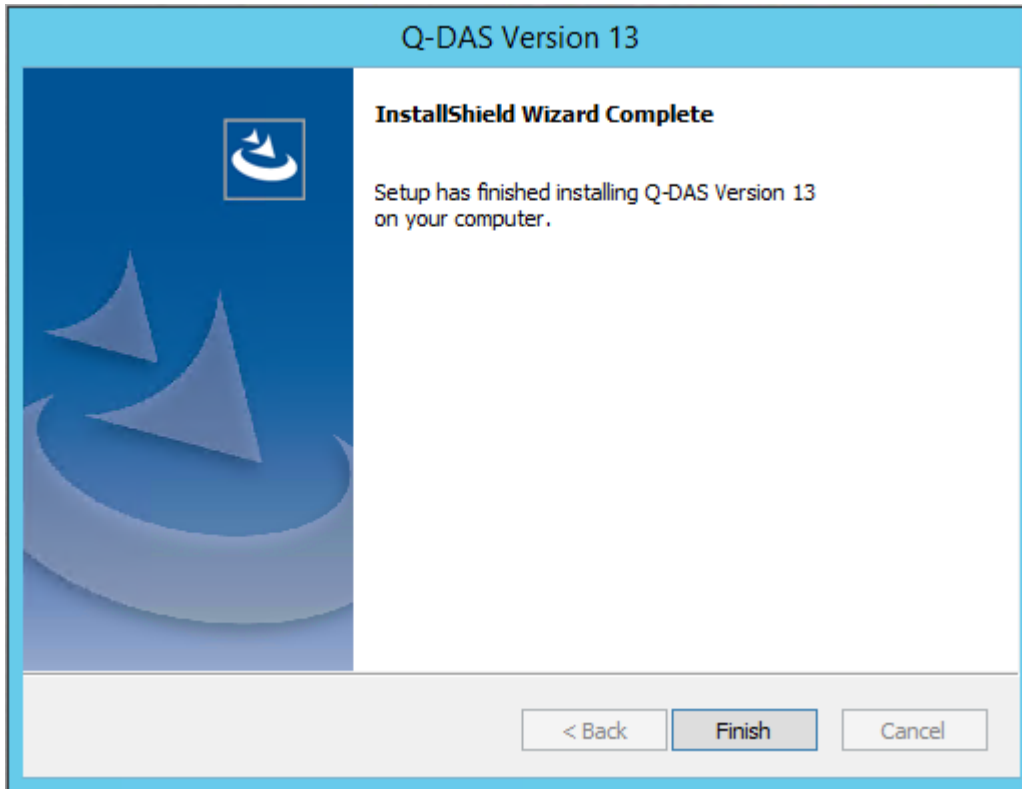
In case of a subsequent registration, the Licence Manager loads and stores the re-registration file (\*.LIC). More information on how to complete the product registration is available in the “Subsequent registration” chapter of the installation manual at <https://www.q-das.com/en/service/support-hotline#faqs|||>.



In case there are not any licences available, you will receive a re-registration file containing the following information: “Registration failed. No more license. product name=0”.

## 4.16 End of the installation

After you completed the installation successfully, the following message opens.



Click "Finish" to close the setup.

## 4.17 Launcher

The Q-DAS Launcher available on the server is provided in the 32-bit variant in order to give you the option to start a new installation based on default Access databases and to transfer them, if required, to SQL for the roll-out of a 64-bit client.

Windows Explorer: << Windows >> Start Menu >> Programs >> Q-DAS QM-TOOLS - V13		
Name	Date modified	Type
V13 - Q-DAS Launcher	21.01.2020 17:27	Shortcut
V13 - Q-DAS Tools	21.01.2020 17:27	Shortcut