

INSTALLATION OF VERSION 13 CONCURRENT LOCAL

87298374 0987298374982739
8470 2 **Q-DBM** 7 1545 82138 12
7198723987 987239 98729872
PROCELLA 234 154 13 544 565
9872 2719827 7 27198723987
45 8912 687723 **VIDARA** 27198
21245 666 1214432 329 **O-QIS**
928 234 345 344 4718723987
0187309 445 455 4877298374
M-QIS DASHBOARD 772728498
81 4981 **DESTRA** 918 2589 23
59 **QS-STAT** 49814981 45598
M-QIS ENGINE 49983 259 1547
7487 29837409872 98374982
73984702 **SOLARA.MP** 987349
9283 120 38 485 0 2 38 49081



CONTENTS

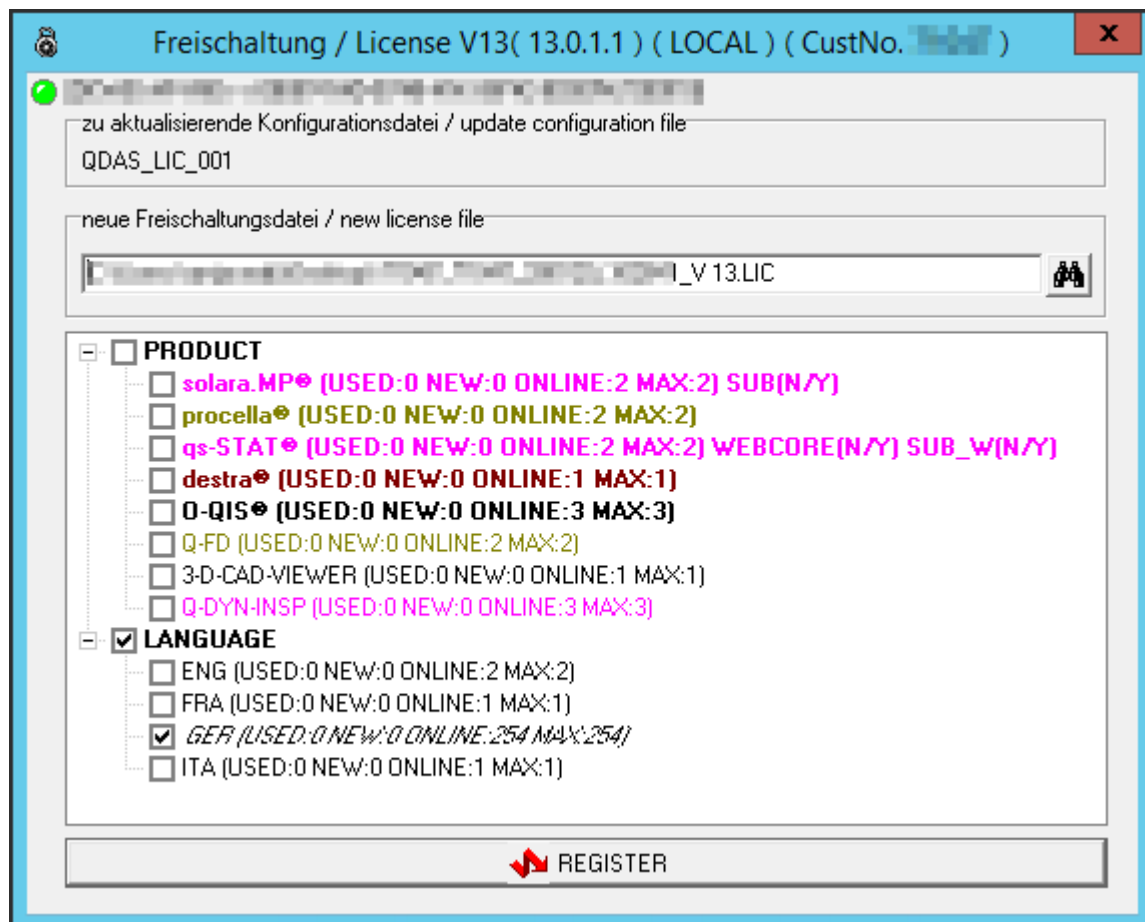
1	Preface – different products/Options	3
2	Directory structure	5
2.1	Program files	5
2.2	Program data.....	6
3	Starting a local installation	8
3.1	Starting the installation	8
3.2	Licence agreement.....	9
3.3	Selecting licences.....	9
3.4	Installation type	10
3.5	Selecting the architecture	11
3.6	Previously installed Q-DAS versions	12
3.7	Target directory	13
3.7.1	Changing the target directory	14
3.8	Type of installation	14
3.8.1	Complete	15
3.8.2	Custom	16
3.8.2.1	Activating additional data fields	17
3.8.2.2	Support email address	18
3.8.2.3	Program launch.....	18
3.9	Desktop shortcut	19
3.10	Q-DAS Launcher status.....	20
3.11	Redistributables.....	21
3.12	SQL Server Native Client	21
3.13	Starting the installation	22
3.14	Selecting the products to be installed	23
3.15	Online registration	24
3.16	End of the installation	25

1 PREFACE – DIFFERENT PRODUCTS/OPTIONS

There are different installation types available for products and options. The initial installation/server provisioning is always based on the setup. To add products, options or languages, you may use the Licence Manager.

The following window shows that you identify products and options based on their notation. Products are displayed in bold letters. Various colours indicate different types of licences.

- Black
Products and options that are not time-limited.
- Yellow
Time-limited test licences
- Red
Time-limited test licences having already expired.
- Pink
"Subscription" licences, i.e. time-limited licences that are based on a specific subscription



Depending on the licence type you purchased or installed, the setup shows even additional information besides products and options.

- **Used**
Shows the number of licences that have already been installed or licenced.
- **New**
Shows the number of currently selected licences. After completing the registration, this option always shows the same content as “used”.
- **Online**
Shows the number of licences available for registration. In case you are not connected to the Internet at the time of registration, the setup does not show the number but “n.a.”.
- **Max**
Shows the number of licences available in the LIC file.
- **Webcore (installed/contained in license file)**
The purchased product includes the option to start this very product even as a web product. The first entry in the brackets indicates whether the product has already been registered, the second one shows whether the web core licence is already contained in the licence file.
- **SUB**
(installed/contained in license file) – subscription desktop products and options
Specifies whether the purchased licence is a subscription-based (time-limited) licence that needs to be registered. The first entry in the brackets indicates whether the product has already been registered, the second one shows whether the subscription licence is already contained in the licence file.
- **SUB_W**
(installed/contained in license file) - subscription web products and options
Specifies whether the purchased licence is a subscription-based (time-limited) web core licence that needs to be registered. The first entry in the brackets indicates whether the product has already been registered, the second one shows whether the subscription web core licence is already contained in the licence file.
- **TL / TL_W / DEMO**
Specify whether the licence is a subscription-based (time-limited) licence, a subscription-based (time-limited) web core licences or a licence set to the demo mode. IN case of time-limited licences, the setup also shows the number of days left until the licence expires.

2 DIRECTORY STRUCTURE

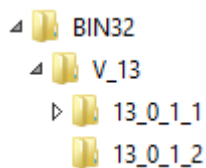
Since the release of version 12, the installation of Q-DAS applications is based on a new installation philosophy. Depending on the installation type, the software creates different directories for program files and uses different sub-directories for program data. This chapter deals with the basic differences of the three different installation types.

2.1 Program files

The structure of program files is strictly based on binary data. In case of server provisioning, they are provided as a 32-bit and a 64-bit version. If you use a local installation or roll out clients, you define the respective version during the installation.

- Server provisioning applies UNC paths. The target directories are as follows.
32-bit files: `\\.\Q-DAS\Share\BIN32 ..`
64-bit files: `\\.\Q-DAS\Share\BIN64 ..`
- When you defined the storage location of local program files in a client installation, the software applies the following directories. The default directory depends on the respective architecture of the operating system.
32-bit operating system: `..\Program Files (x86)\Q-DAS\CLIENT ..`
64-bit operating system: `..\Program Files\Q-DAS\CLIENT ..`
- Based on a local installation, the default directory depends on the operating system.
32-bit operating system: `..\Program Files (x86)\Q-DAS\Local ..`
64-bit operating system: `..\Program Files\Q-DAS\Local ..`

The BIN32/BIN64 directories each contain a single sub-directory for each minor release or trial version. This sub-directory includes the respective version.



2.2 Program data

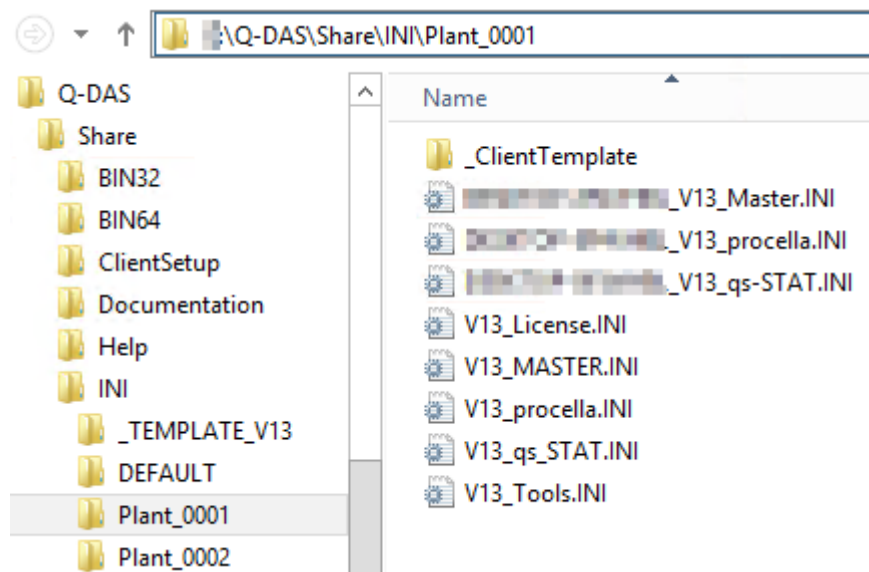
Each of the three installation types provides a similar directory structure. The differences are as follows.

"Share" in case of server provisioning	"Client" in case of a client installation	"Local" in case of a local installation
<ul style="list-style-type: none"> Q-DAS <ul style="list-style-type: none"> Share <ul style="list-style-type: none"> BIN32 BIN64 ClientSetup Documentation Help INI Launcher PLANT <ul style="list-style-type: none"> _TEMPLATE_V13 DEFAULT <ul style="list-style-type: none"> Buttonbars CADFiles Catalog ComClient DATA DatabaseLinks Databases Examples Graphics Masks Monitoring Others PDF Reports SAP Scripts Web 	<p>A client installation normally applies the server directories. In case you defined the storage location for local files when you use a client installation, the software applies the following directories to store program data, e.g. local text databases.</p> <ul style="list-style-type: none"> Q-DAS <ul style="list-style-type: none"> Client <ul style="list-style-type: none"> PLANT <ul style="list-style-type: none"> DEFAULT 	<ul style="list-style-type: none"> Q-DAS <ul style="list-style-type: none"> Local <ul style="list-style-type: none"> Documentation Help INI Launcher PLANT <ul style="list-style-type: none"> DEFAULT <ul style="list-style-type: none"> Buttonbars CADFiles Catalog DATA DatabaseLinks Databases Examples Graphics Masks Monitoring Others PDF Reports SAP Scripts Web

INI files

The INI directory contains all INI files for the respective product start when you apply a local installation or a server-client installation.

Server-client provisioning provides the INI files of a specific plant in the respective sub-directory. The client INI files are also stored on the server and the file name gets the respective client Windows computer name as a prefix.



Plant directory

The plant directory includes configuration files and different examples, i.e. basically all files that a customer is allowed to change. As an example, these are masks, case studies, reports, catalogues, various storage directories and many more.

The structure available for server-client provisioning was prepared in a way that you may create several plants in parallel. This structure is reasonable in a WTS or Citrix environment. We recommend you take part in a fee-based workshop with the Q-DAS project team to create a structure meeting your individual needs. For reasons of performance, we do not recommend you access the network of a different location based on a standard server-client solution.

Please inform your Q-DAS contact person or send an email to info.qdas.mi@hexagon.com when you want to define the structure and apply the template (_TEMPLATE_V13).

3 STARTING A LOCAL INSTALLATION

3.1 Starting the installation

Insert the DVD into the drive and the start dialogue box opens automatically.

In case it does not open automatically, proceed as follows.

- Open the respective drive in the Windows Explorer and double-click on SETUP_V13.exe to execute the file
- or
- click on “Start” and “Execute”,
- enter the drive letter of the DVD drive in the input field and add the file name SETUP_V13.exe.

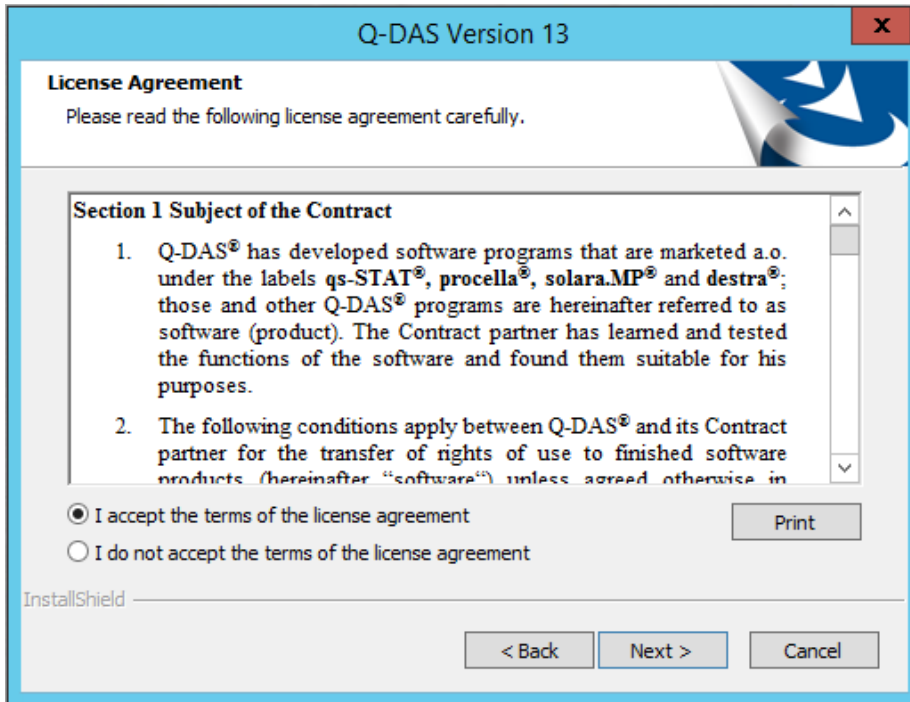
Example: *F:\SETUP_V13.exe*



Click "Next >" to start the installation of version 13.

3.2 Licence agreement

You accept the terms by activating the "I accept the terms of the license agreement" radio button. The "Next >" button is enabled.

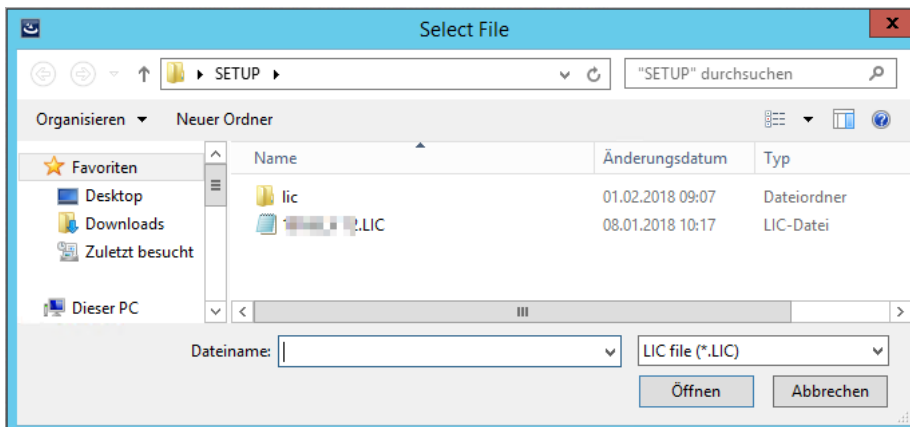


Click "Next >" to continue the installation.

3.3 Selecting licences

Select your licence file (*.LIC) of version 13.

It is available on your DVD by default (or has been sent to you by email).



Select the respective *.LIC file and click "Open".

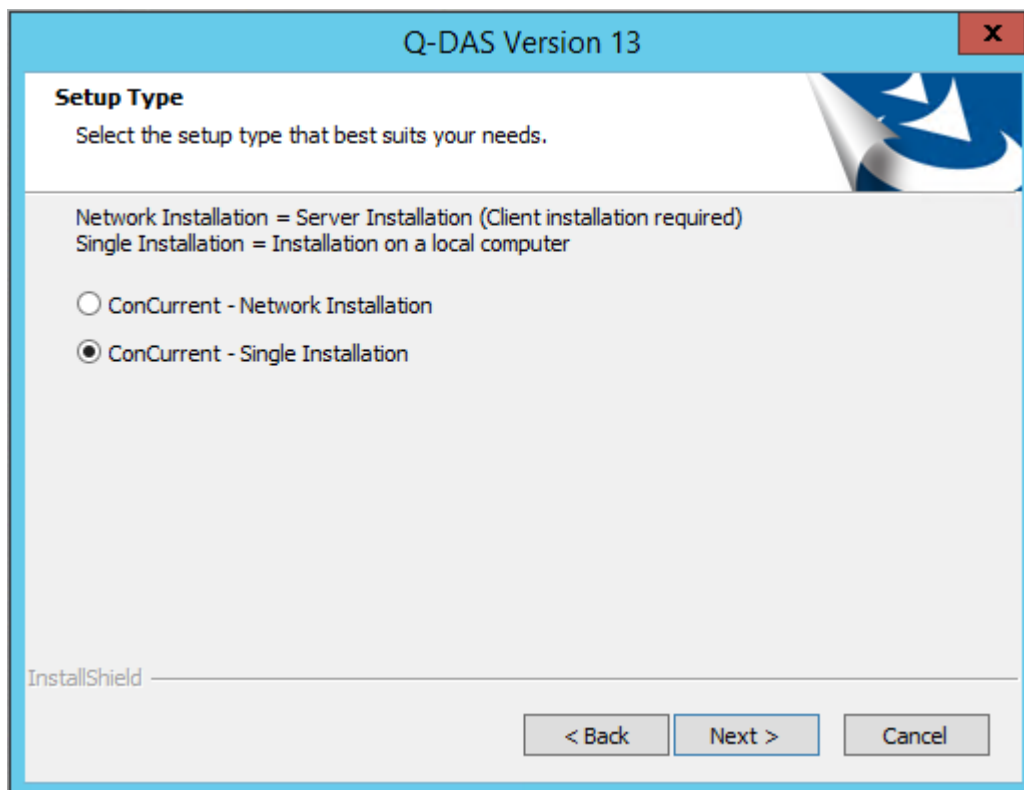
3.4 Installation type

Select the installation type

ConCurrent – Network Installation

= Installation provided on the server, subsequent client installation on any number of computers included; however, the number of simultaneous user logins is restricted to the number of licences. Additional information about network installations are available at <https://www.q-das.com/en/service/support-hotline#faqs|||>.

ConCurrent – Single Installation. A separate document describes the local single installation.

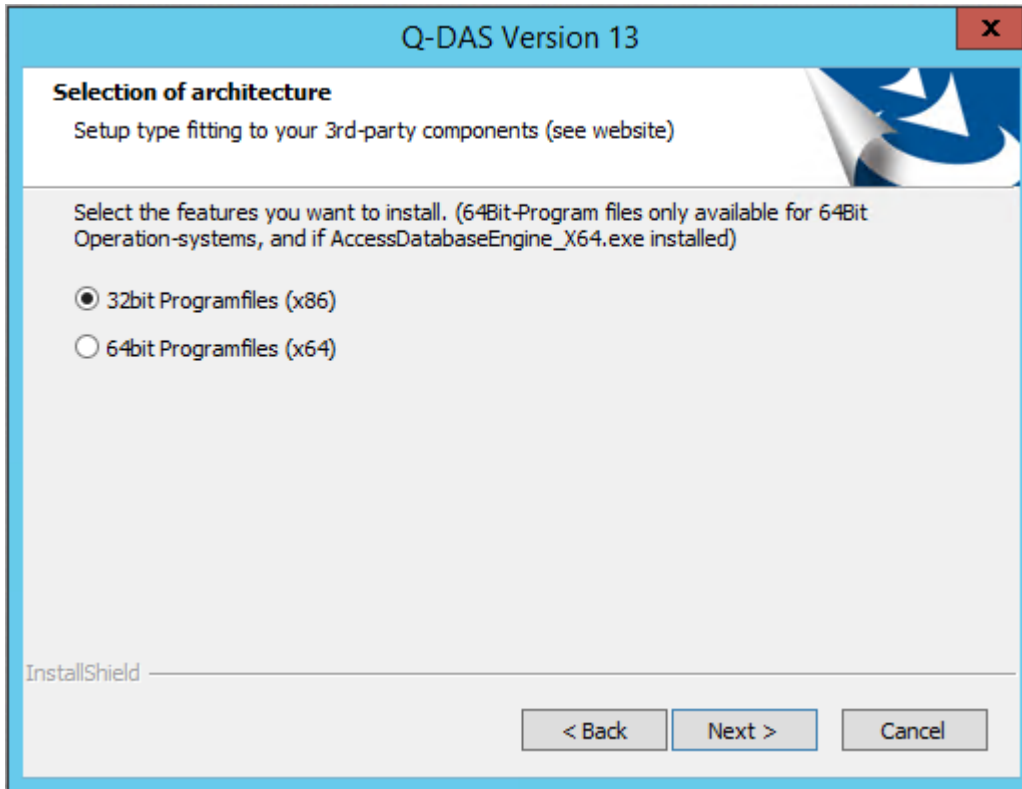


Please consider that you may only apply a **single installation type** on a computer. The first time you start the setup, you define the installation type for this computer/server.

Select the desired installation type and click "Next >".

3.5 Selecting the architecture

Since version 12, Q-DAS also provides a 64-bit variant.



In case of a local installation, the 64-bit variant will only be available if

- the local computer has a 64-bit operating system installed.
- the AccessDatabaseEngine_X64.exe system component is installed. Otherwise, you will not be able to access Access databases in the 64-bit mode.



Please visit the Microsoft website to install this system component.



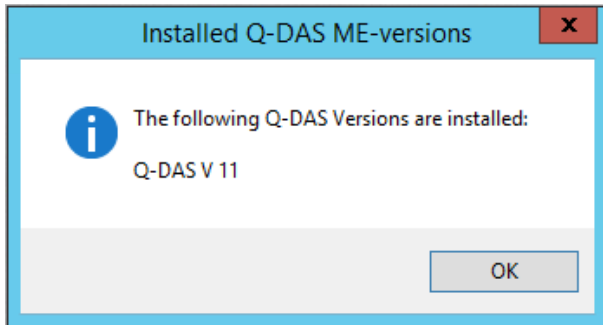
In case you use the 64-bit variant of Q-DAS applications, we recommend you do not apply Access databases. Applying the Microsoft 64-bit Access driver shall remain an exception. We recommend you transfer all databases to SQL or Oracle when you use the 64-bit variant of Q-DAS applications.



When you install the 64-bit variant, please consider that not every manufacturer has already provided third-party DLLs required for serial data recording. As of January 2020, the ones of Heidenhain and Ibrit are still missing and are only available for the 32-bit variant. Please contact the Q-DAS hotline team for the latest information.

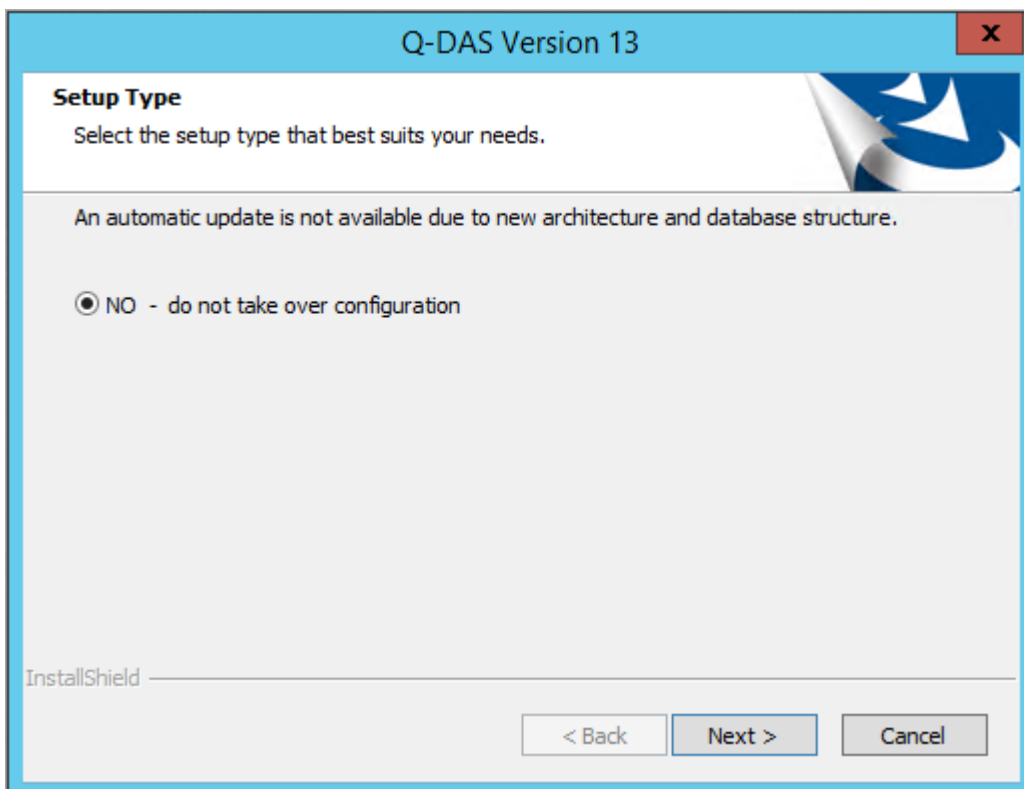
3.6 Previously installed Q-DAS versions

In case you have already installed some Q-DAS versions on your computer, the following message appears indicating the installed versions.



Click "OK" to continue the installation.

You cannot transfer any configurations (databases, input screen masks, reports, etc.) automatically from previous version since the system structure and database structures of version 13 changed. Additional information about updating previous versions are available at <https://www.q-das.com/en/service/support-hotline#faqs>



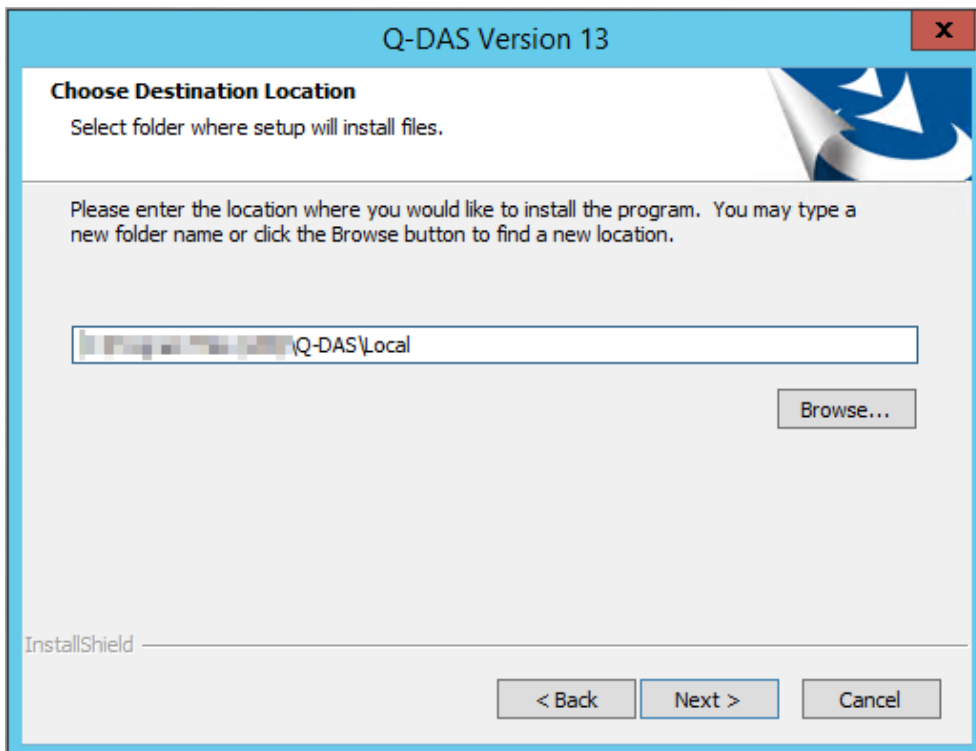
Click "Next >" to start the installation of version 13.

3.7 Target directory

Select the target directory for the installation of Q-DAS version 13.

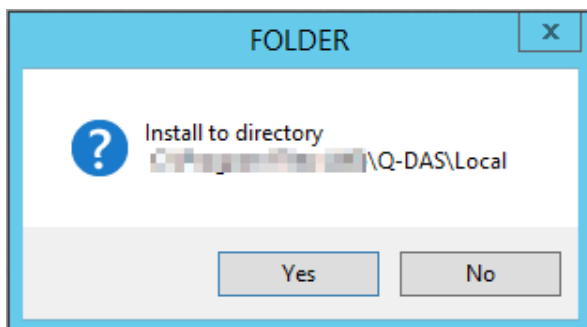
The default target directories of the 32-bit and 64-bit variants differ.

- 32-bit: Program Files (x86)
- 64-bit: Program Files



When you want to apply the target directory, click “Next >”.

A confirmation prompt opens.



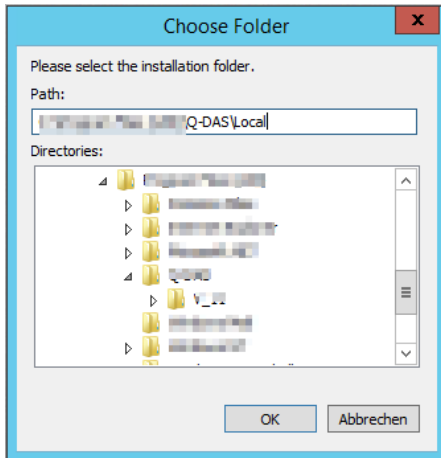
To select a different target directory, click “No”.

Confirm the selected target directory by clicking “Yes” and the installation continues.

3.7.1 Changing the target directory

You may change the target directory by entering the path directly in the input field or by clicking “Browse”. We recommend you keep the default settings, i.e. the path the system provides.

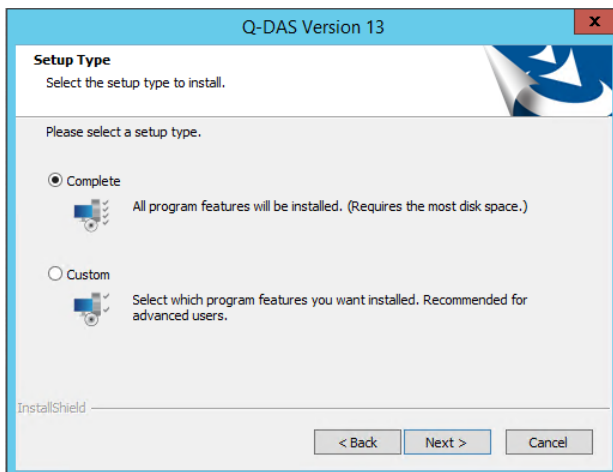
You may enter the new path directly or select the respective directory.



Click “OK”.

3.8 Type of installation

There are two different setup types available for a single installation.



- “Complete” refers to the default installation of all program features and is recommended for most users.
- “Custom” is only suitable for experienced users since you have to select the single components you want to install.

Select a setup type and continue by clicking “Next >”.

3.8.1 Complete

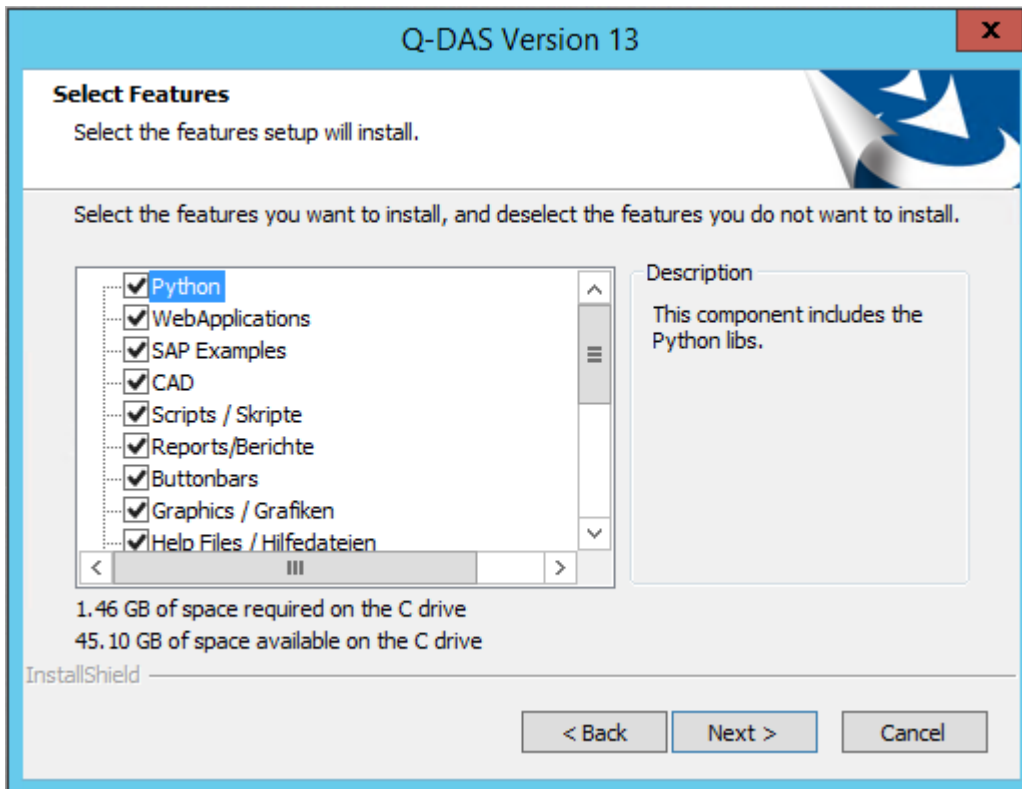
A complete installation enables the following settings by default. In case you want to change them, select a customised installation ("Custom").

- The following additional data fields are enabled by default.
 - K0006 = batch number/ID number
 - K0007 = cavity number/spindle number
 - K0009 = text
 - K0011 = process parameter
 - K0014 = part ID number
 - K0015 = reason for test
 - K0016 = production number
 - K0017 = work piece fixture number
 - K0053 = order number
- The email address you contact for support is hotline.qdas.mi@hexagon.com
- The registry entries are set to "Do not allow multiple start" and the addition "Block products". Read about the meaning of this option in the [Program launch](#) chapter.
- Desktop shortcuts for the Q-DAS Launcher and Q-DAS Tools are not created automatically. The setup only asks you whether you want to create these shortcuts automatically when you selected the "custom" installation type.
- The setup always installs the Python components. They are required for the communication between the Q-DAS AI-PT application and the Python Engine.

3.8.2 Custom

This dialogue box only opens when you selected the “Custom” installation type for a single installation.

Select the components you want to install.

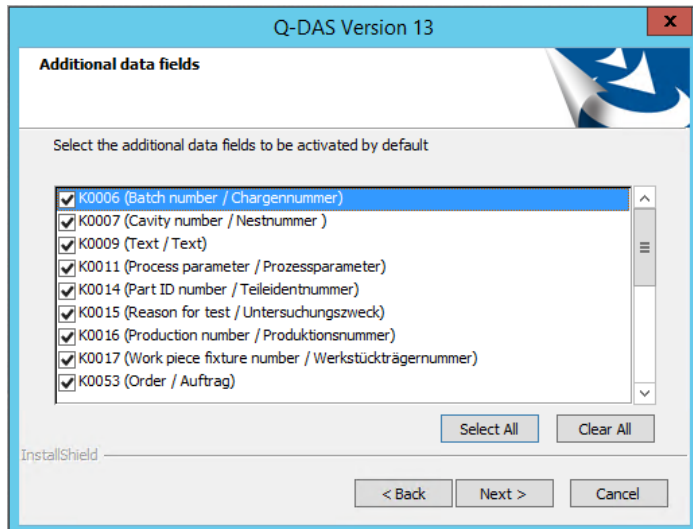


We recommend you keep the default settings (all components enabled).

Select the respective components and click “Next >”

3.8.2.1 Activating additional data fields

This dialogue box only opens when you selected the “Custom” installation type for a single installation. Activate the additional data fields you require in the software. Any additional data field you deactivate here are indicated as “disabled” in the INI file.



The following additional data fields are enabled by default.

K0006 = batch number/ID number

K0007 = cavity number/spindle number

K0009 = text

K0011 = process parameter

K0014 = part ID number

K0015 = reason for test

K0016 = production number

K0017 = work piece fixture number

K0053 = order number



You activate these fields to provide the additional data fields in the software. You might still have to add these fields in the databases! Find more information about additional data fields in the database in the “Error messages, K00xx cannot be written” document at <https://www.q-das.com/en/service/support-hotline#faqs|||>.



Since version 13, you may define the activated additional data based on sets of additional data. Our homepage offers the “Sets of additional data” document describing how to change the subsequently for the entire plant after the installation.

<https://www.q-das.com/en/service/support-hotline#faqs|||>

For reasons for performance and database size we recommend you only activate the additional data fields you really need.

When you want to activate all additional data fields, click “Select All”.

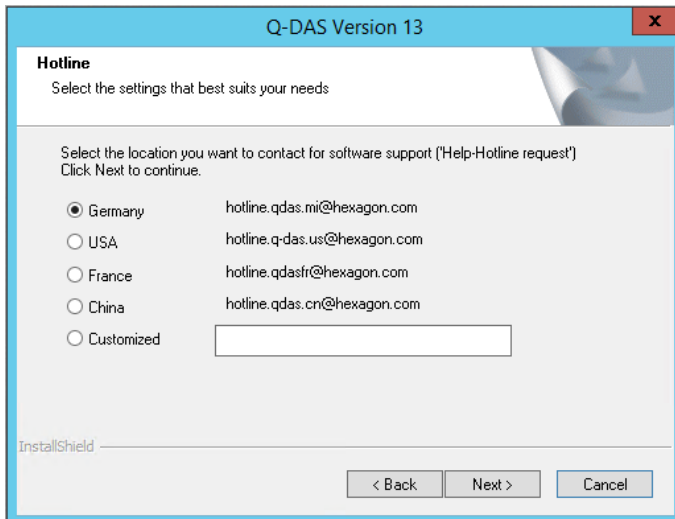
In case you want to disable all additional data fields, click “Clear All”.

Activate the desired additional data fields and click “Next >”.

3.8.2.2 Support email address

This dialogue box only opens when you selected the “Custom” installation type for a single installation.

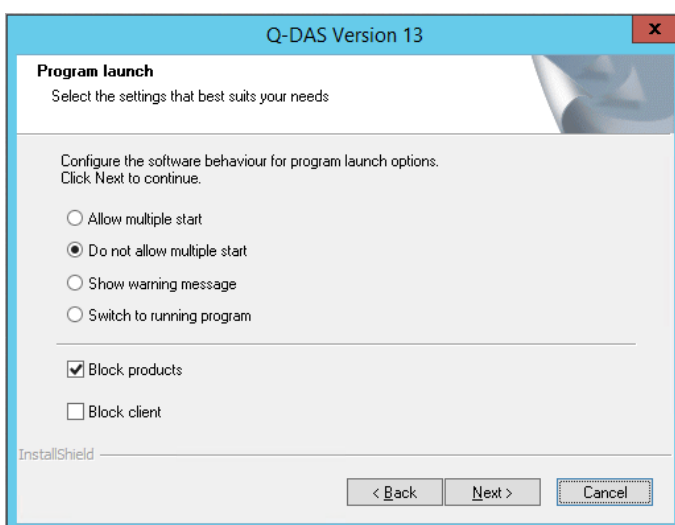
Specify the email address you want to contact for software support.



Select the respective option and click “Next >”.

3.8.2.3 Program launch

Select whether you want to accept multiple product starts. “Do not allow multiple start” and the additional option “Block products” are enabled by default. In this case, you can start each product on a computer only once in the registry, but you may still run different products (e.g. qs-STAT and solara.MP) simultaneously. Activate the “Allow multiple start” to start the same product several times but consider that even the same product blocks will block several licences in this case.

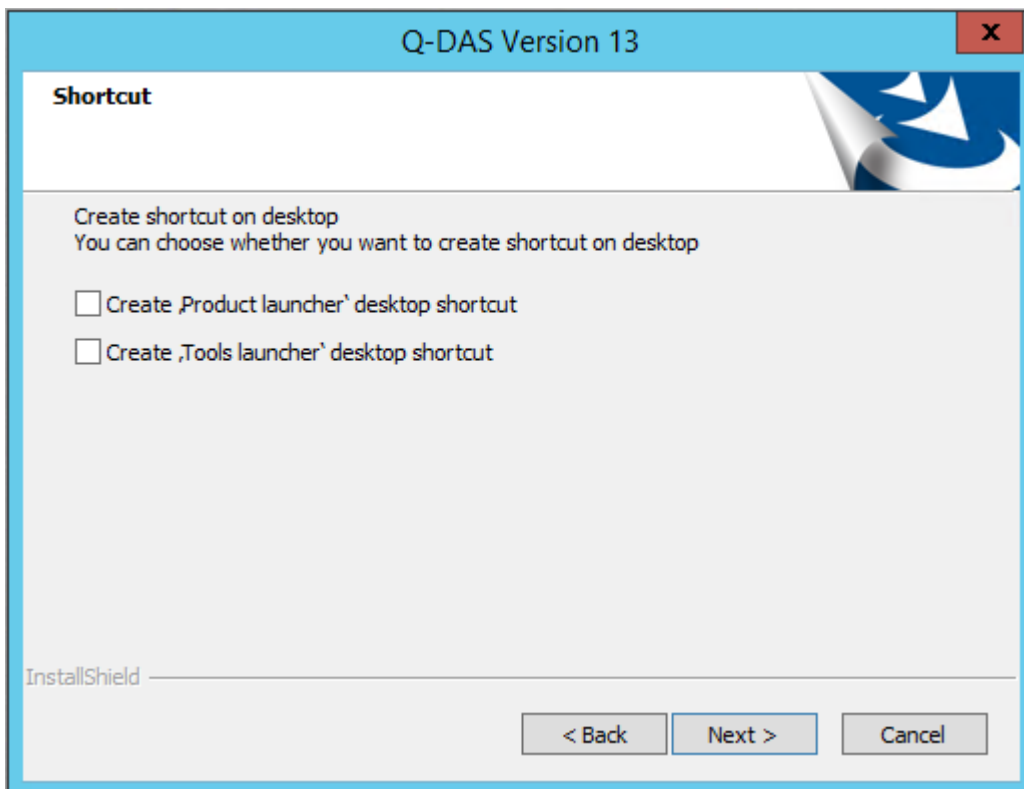


Select the respective option and click “Next >”.

3.9 Desktop shortcut

This dialogue box only opens when you selected the “Custom” installation type for a single installation. Select whether you want to create the desktop shortcut for the Q-DAS Launcher and Q-DAS Tools automatically.

- Create ,Product launcher’ desktop shortcut
The setup creates a desktop shortcut for the Q-DAS Launcher. The Q-DAS Launcher makes it easy to start any Q-DAS application.
- Create ,Tools launcher’ desktop shortcut
The setup creates a desktop shortcut for Q-DAS Tools. Q-DAS Tools makes it easy to start any Q-DAS management application, e.g. licence manager or database update tool.



Select the respective option and click “Next >”.

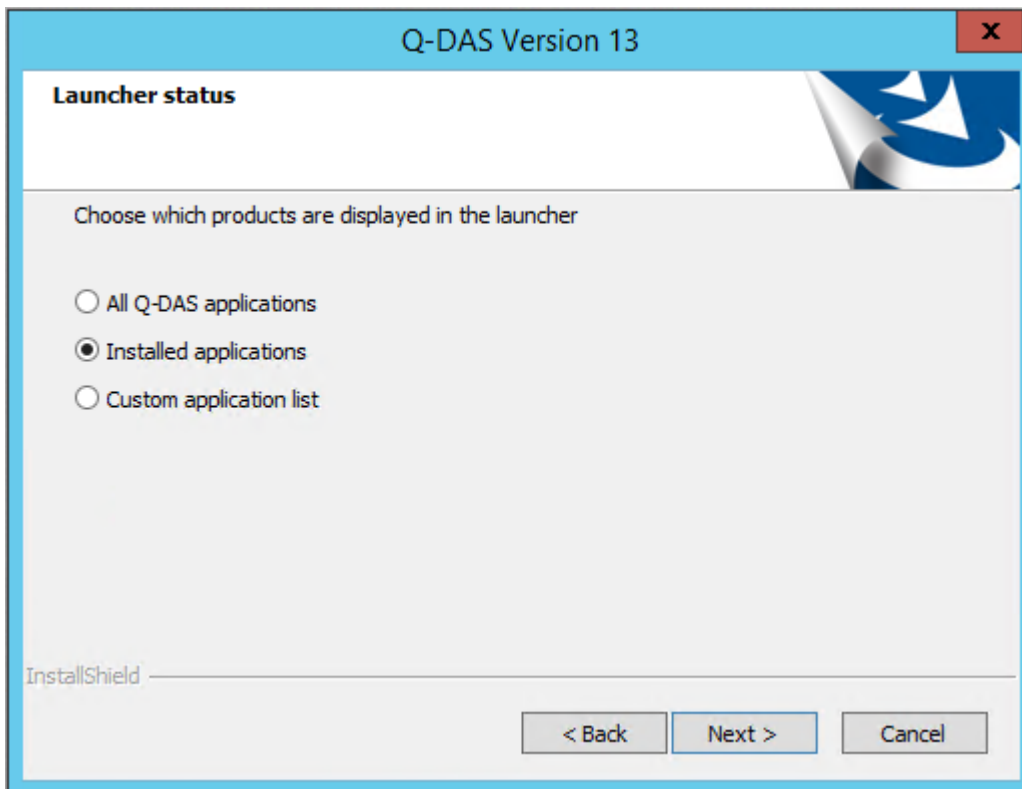
3.10 Q-DAS Launcher status

The Q-DAS Launcher is a kind of start centre for Q-DAS applications. After assigning the single licences successfully, they will be available in the respective Q-DAS applications. Use this dialogue box to configure, which products will be available in the Q-DAS Launcher.

You may choose one of the following options.

- All Q-DAS applications
All Q-DAS products are illustrated in the form of tiles in the Q-DAS Launcher. Products that have not been installed or are not registered are greyed out.
- Installed applications
The Q-DAS Launcher only shows the products you installed.
- Custom application list
The Q-DAS Launcher only shows the products installed on the computer. Products that are not registered are greyed out. This option does not play any role in a local installation.

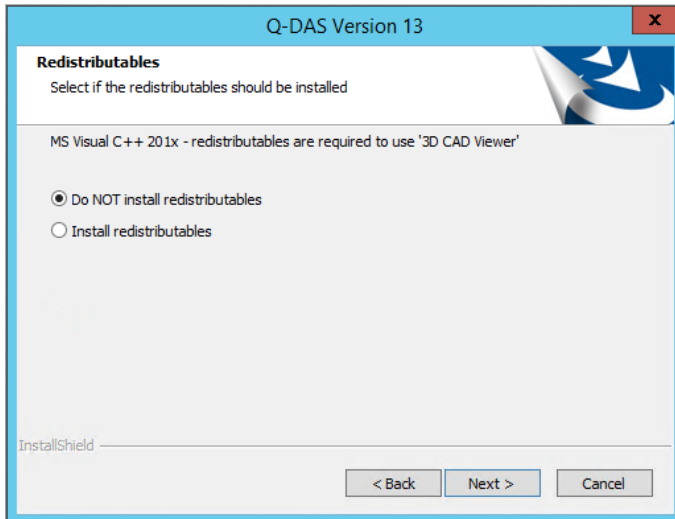
You may still change these settings after the installation by right-clicking on the Q-DAS Launcher.



Select the respective option and click "Next >".

3.11 Redistributables

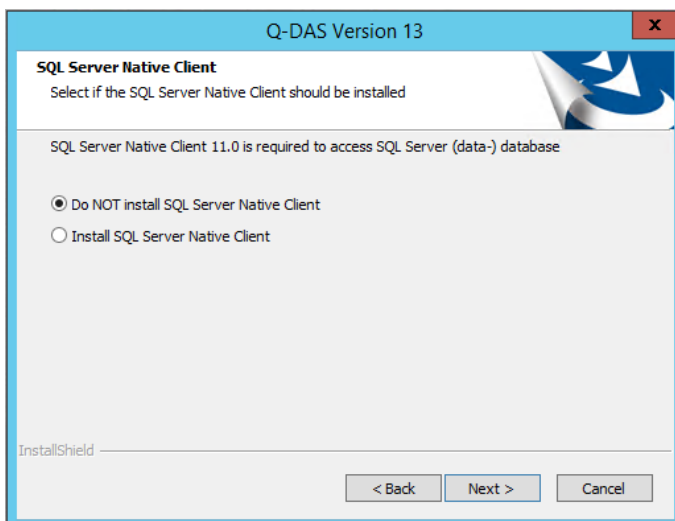
When you want to use Q-DAS 3D-CAD-Viewer, you have to install Microsoft Visual Studio Redistributables. Select whether you want to install them automatically.



Choose the respective option and click "Next >".

3.12 SQL Server Native Client

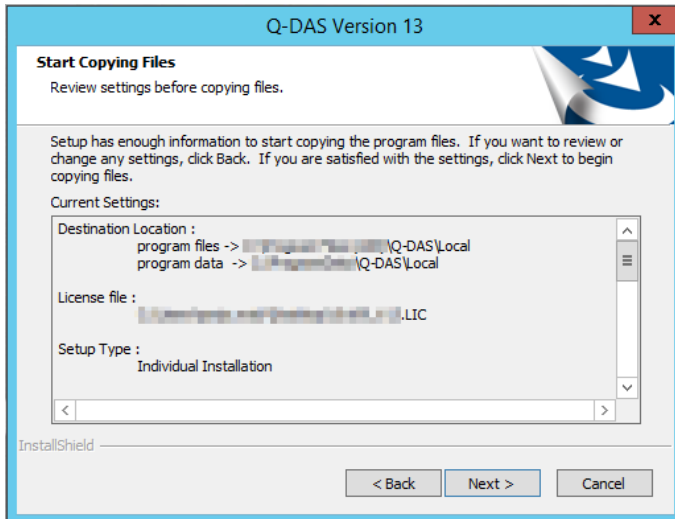
Applying SQL databases requires access to the data of the SQL Server Native Client. Since version 12.0.2.1, this client is provided by default. In case the SQL Server Native Client is not available yet on the respective computer, you select whether you want to install it automatically.



Choose the respective option and click "Next >".

3.13 Starting the installation

A preview shows the settings you adjusted. To change these settings, click the “< Back” button until you see the settings you want to readjust.



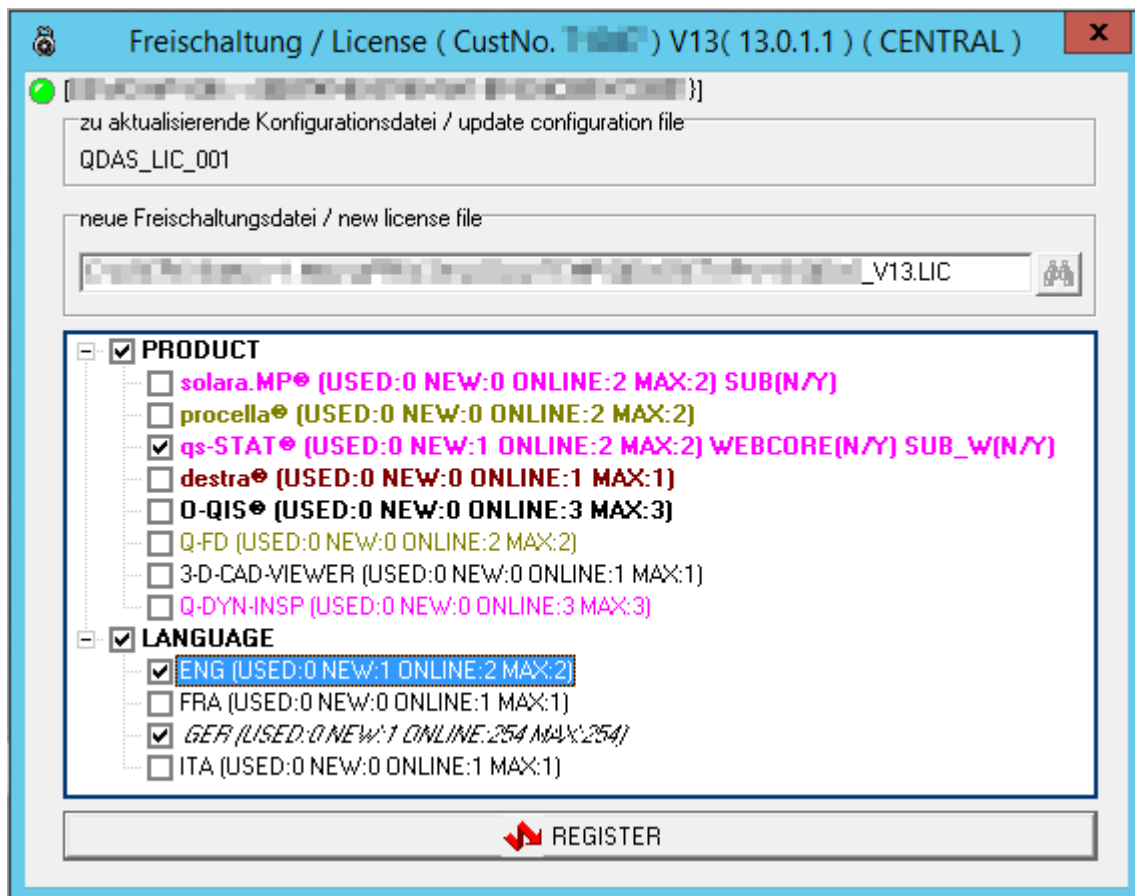
Start the installation by clicking “Next >”.

3.14 Selecting the products to be installed

A local installation only applies one licence for each product and each language.

Please consider that you cannot change the number of licences for the default language (in this case German "GER"). The number is determined automatically.

All products, options and languages are disabled by default. Activate the products/options/languages you want to install and confirm your choice by clicking "OK".



In this example, you installed qs-STAT, German as default language and English as an additional language.

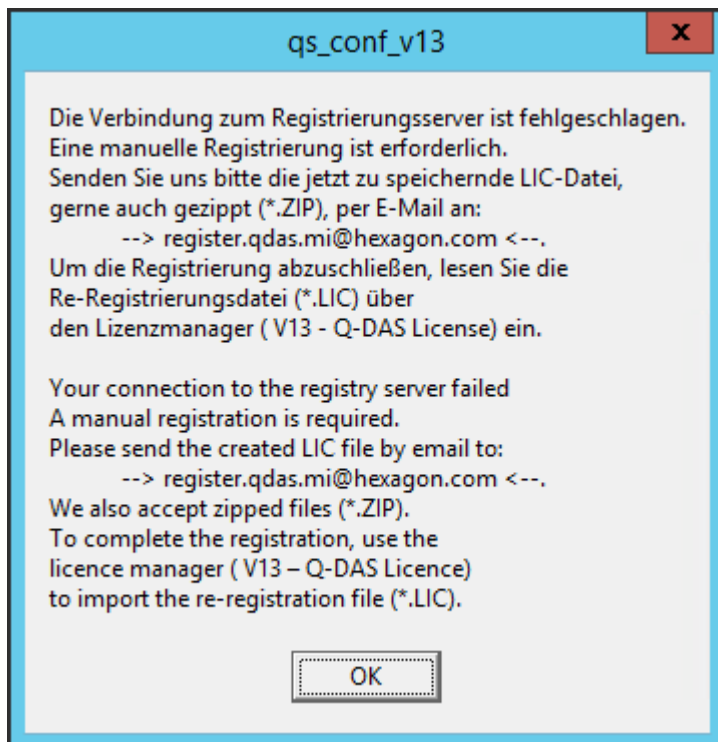
M-QIS Engine is not available in a local installation.

3.15 Online registration

The online registration starts after you installed the products successfully.

In case you are connected to the Internet during the installation and your Firewall does not block the registration, the online registration runs automatically.

In case you are not connected to the Internet during the installation or there are not any licences available, you are required to register the software manually. The following dialogue box opens.



Without any valid registration, the full functional range of the software will only be available to you for 30 days. You have to register your software subsequently in this period; otherwise, you will only have access to a trial version.

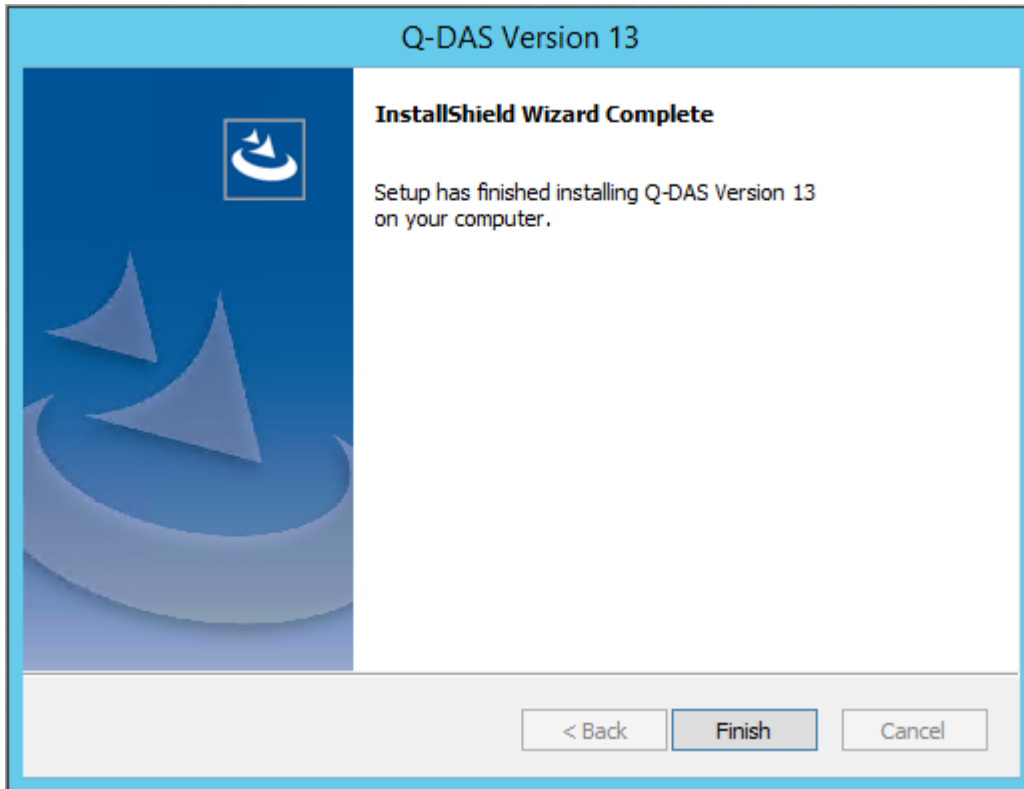
In case of a subsequent registration, the Licence Manager loads and stores the re-registration file (*.LIC). More information on how to complete the product registration is available in the “Subsequent registration” chapter of the installation manual at <https://www.q-das.com/en/service/support-hotline#faqs|||>.



In case there are not any licences available, you will receive a re-registration file containing the following information: “Registration failed. No more license. product name=0”.

3.16 End of the installation

After you completed the installation successfully, the following message opens.



Click "Finish" to close the setup.