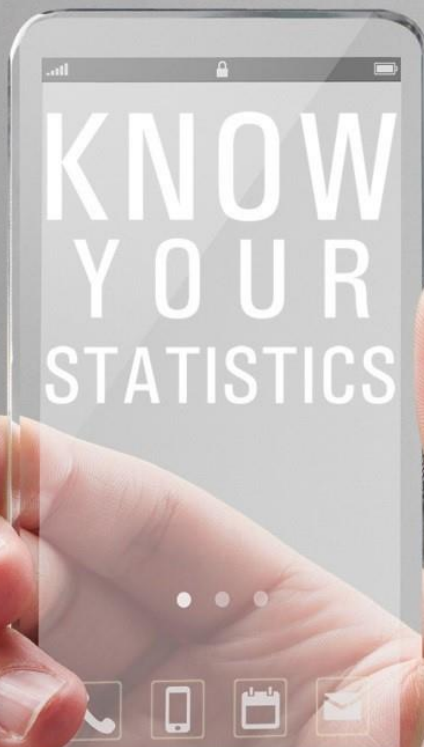


# INSTALLATION OF VERSION 13 CONCURRENT NETWORK - CLIENT

87298374 0987298374982739  
8470 2 **Q-DBM** 7 1545 82138 12  
7198723987 987239 98729872  
**PROCELLA** 234 154 13 544 565  
9872 2719827 7 27198723987  
45 8912 687723 **VIDARA** 27198  
21245 666 1214432 329 **O-QIS**  
928 234 345 344 4718723987  
0187309 445 455 4877298374  
**M-QIS DASHBOARD** 772728498  
81 4981 **DESTRA** 918 2589 23  
59 **QS-STAT** 49814981 45598  
**M-QIS ENGINE** 49983 259 1547  
7487 29837409872 98374982  
73984702 **SOLARA.MP** 987349  
9283 120 38 485 0 2 38 49081



# CONTENTS

- 1 Preface ..... 3**
- 1.1 Starting the installation – opening the setup .....5
- 1.2 Licence agreement .....6
- 1.3 Selecting the architecture .....7
- 1.4 Selecting the software version .....8
- 1.5 Selecting the plant .....9
- 1.6 Target directory ..... 10
  - 1.6.1 Changing the target directory ..... 11
- 1.7 Type of installation – setup type ..... 12
  - 1.7.1 “Complete” setup type ..... 13
  - 1.7.2 “Custom” setup type ..... 13
    - 1.7.2.1 Product selection ..... 14
    - 1.7.2.2 Local components ..... 15
    - 1.7.2.3 Program launch ..... 18
- 1.8 Launcher desktop shortcut ..... 19
- 1.9 Launcher status ..... 20
- 1.10 Redistributables ..... 21
- 1.11 SQL Server Native Client ..... 22
- 1.12 Starting the installation ..... 23
- 1.13 Generating the product INI ..... 24
- 1.14 End of the installation ..... 24
- 1.15 Launcher ..... 25

# 1 PREFACE

You may distribute clients after completing server provisioning successfully. Server provisioning is described in a separate document.



When you distribute the Q-DAS applications Q-DM Datamanagement or M-QIS Engine Reporting (Reporting System), we recommend you only use the local installation type. There is no server-client installation available for Q-DM Datamanagement or M-QIS Engine Reporting.



Clients are not able to use local server paths. This is the reason why the first setup of a client creates entries based on UNC paths. It is important to ensure that the client has write access to the FireDAC.ini on the server when you first install a client. If the client does not have write permission or UNC paths are missing, the installation will be cancelled.



**CAUTION:** After distributing clients, a separate INI file is created for each product per client on the server. It includes various (default) paths e.g. for DFQ files, databases, graphics and CAD files. The “\_ClientTemplate” directory on the server provides you with the template of the clients’ INI files. Changing all paths of all \*.INI files requires considerable effort and is not recommended.

INI > DEFAULT > \_ClientTemplate

Name

- V13\_Datamanagement.INI
- V13\_DB\_Monitoring.INI
- V13\_destra.INI
- V13\_MASTER.INI
- V13\_M-QIS\_Dashboard.INI
- V13\_O-QIS.INI
- V13\_PLANT\_VIEWER.INI
- V13\_procella.INI
- V13\_Q-COM.INI
- V13\_Q-EMP.INI
- V13\_Q-FD.INI
- V13\_qs\_STAT.INI
- V13\_solara\_MP.INI
- V13\_vidara.INI

## Template for client distribution

The sections shown below only provide a brief overview to illustrate the problem. Most paths in the INI files are specific to a certain module. The following example only refers to the Sample Analysis module. The same applies to all the other paths and modules.

```
;Standardpfade Datei Öffnen // Default paths for File-Open dialog
read_as=\\[redacted] \PLANT\DEFAULT\DATA\OwnData

;Standardpfade Datei Speichern // Default paths for File-Save dialog
write_as=\\[redacted] \PLANT\DEFAULT\DATA\OwnData

; Standardpfade Grafiken // Default paths for picture files
BMP_AS=\\[redacted] \PLANT\DEFAULT\GRAPHICS

; Standardpfade CAD // Default paths for CAD files
CAD_AS=\\[redacted] \PLANT\DEFAULT\CADFiles

; Standardpfade Berichtsvorlagen // Default paths for report templates
REPORTS_AS=\\[redacted] \PLANT\DEFAULT\REPORTS

; Standardpfade zum speichern der *.PDF-Dateien // Default PDF output paths
PDF_AS=\\[redacted] \PLANT\DEFAULT\PDF

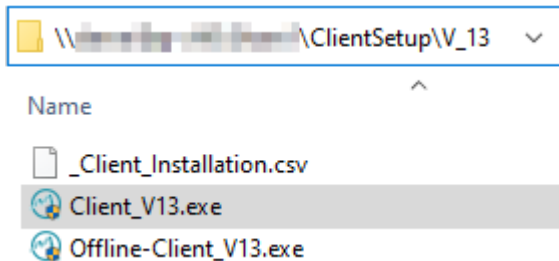
; Standardbericht "ActiveWindow" mit Teilekopf // Default paths for "Print current window" report template with parts header
PartGraficDefFile_AS=\\[redacted] \PLANT\DEFAULT\REPORTS\ALL_PART.DEF

; Standardbericht "ActiveWindow" mit Merkmalkopf // Default paths for "Print current window" report template with
characteristics header
CharGraficDefFile_AS=\\[redacted] \PLANT\DEFAULT\REPORTS\ALL_CHAR.DEF

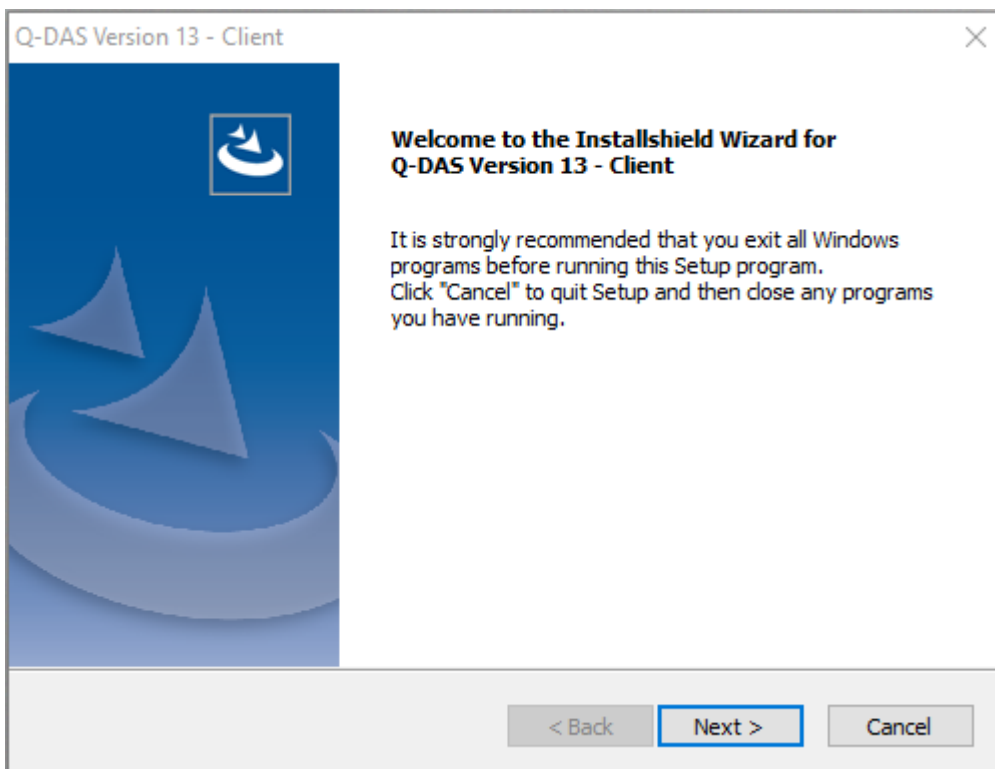
; Standardpfade Buttonleisten (f. Designer) // Default paths for button bars (for Designer)
Buttonbars_AS=\\[redacted] \PLANT\DEFAULT\ButtonBars
```

## 1.1 Starting the installation – opening the setup

The application starting the client setup is available under ...\\Share\ClientSetup\V13 in case of server provisioning.



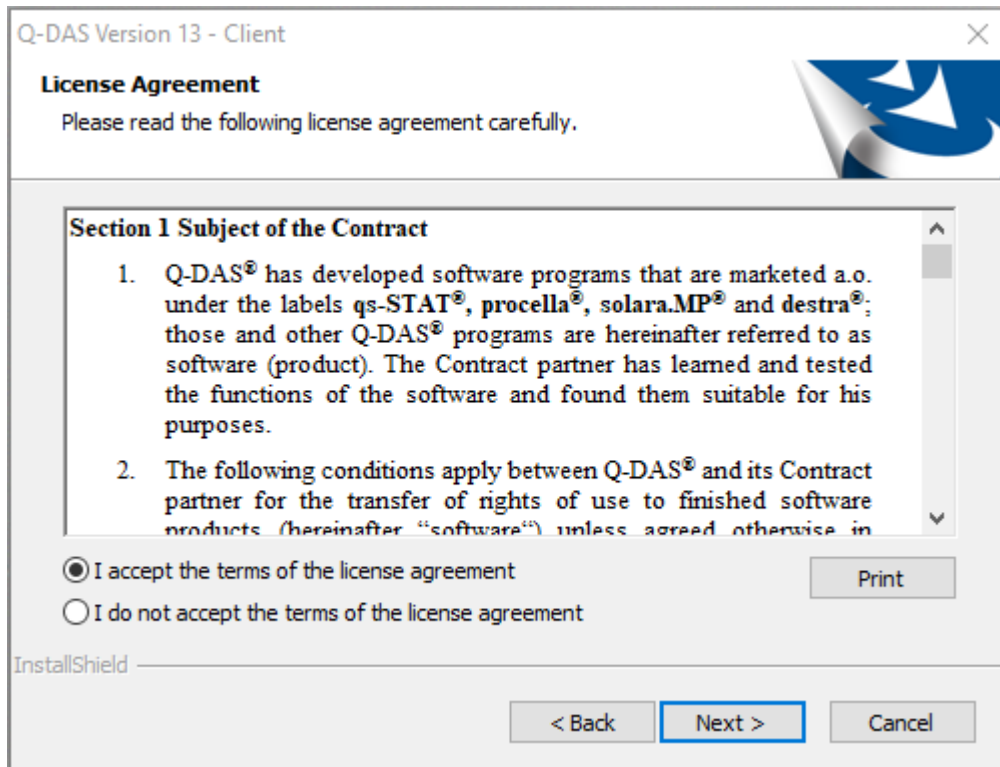
You may access this directory from any computer and select the “Client\_V13.exe” file to start the client installation.



The installation program checks whether you have already installed Q-DAS software. The start dialogue box opens. Click “Next >” to start the installation.

## 1.2 Licence agreement

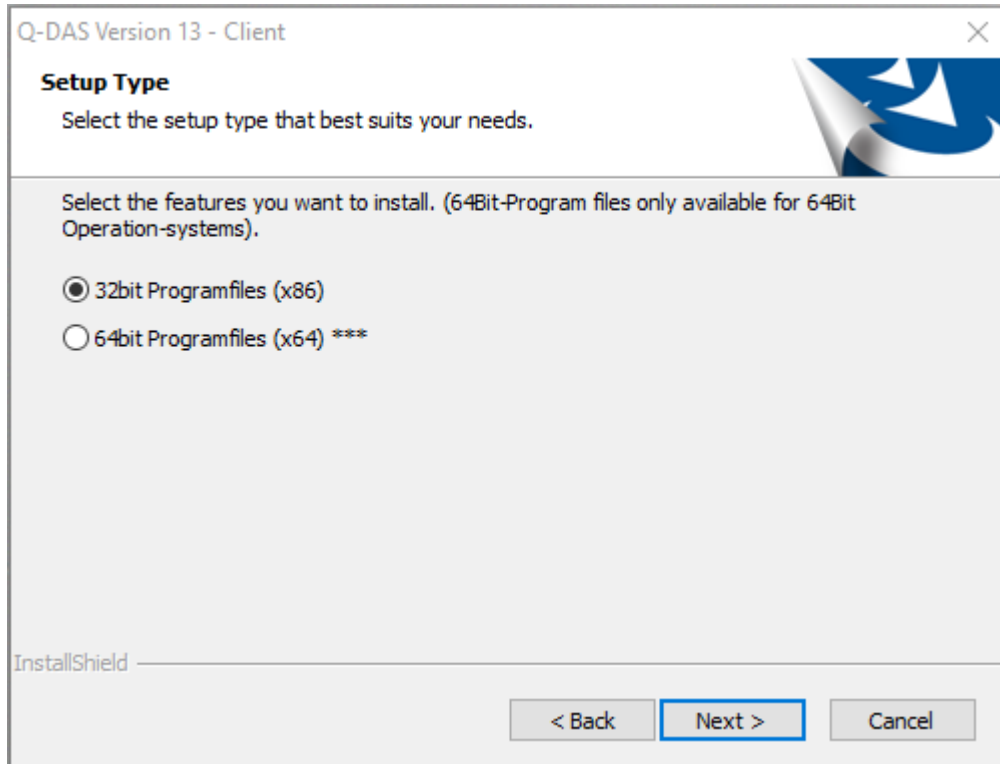
You accept the terms by activating the "I accept the terms of the license agreement" radio button. The "Next >" button is enabled.



Click "Next >" to continue the installation.

## 1.3 Selecting the architecture

Since version 12, Q-DAS also provides a 64-bit variant.



In case of a local installation, the 64-bit variant will only be available if

- the local computer has a 64-bit operating system installed.



The setup does **NOT** check whether you still use Access databases. Distributing 64-bit clients, your IT department has to ensure that all server databases (values/licence/configuration/text database) are based on SQL or Oracle. Applying Access databases, the Microsoft system component AccessDatabaseEngine\_X64.exe has to be installed.



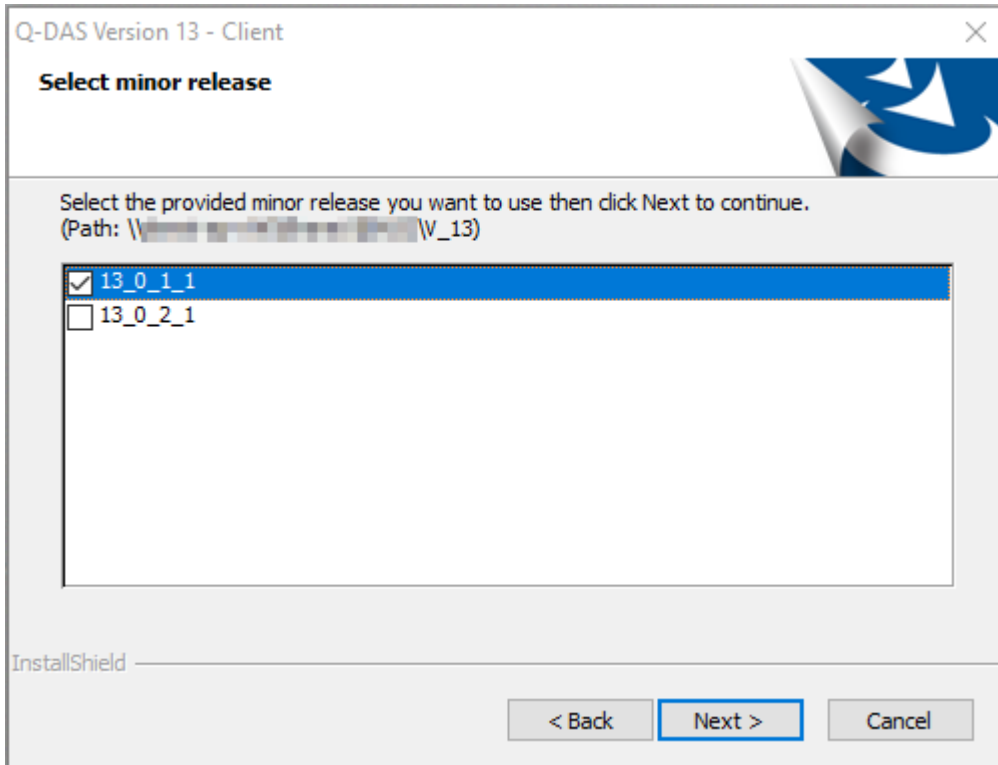
In case you use the 64-bit variant of Q-DAS applications, we recommend you do not apply Access databases. Applying the Microsoft 64-bit Access driver shall remain an exception. We recommend you transfer all databases to SQL or Oracle when you use the 64-bit variant of Q-DAS applications.



When you install the 64-bit variant, please consider that not every manufacturer has already provided third-party DLLs required for serial data recording. As of January 2020, the ones of Heidenhain and Ibrit are still missing and are only available for the 32-bit variant. Please contact the Q-DAS hotline team for the latest information.

## 1.4 Selecting the software version

Since version 12, you may choose between the latest minor releases. Using a client setup, you may select the version you want to distribute, and which is thus linked to the client.

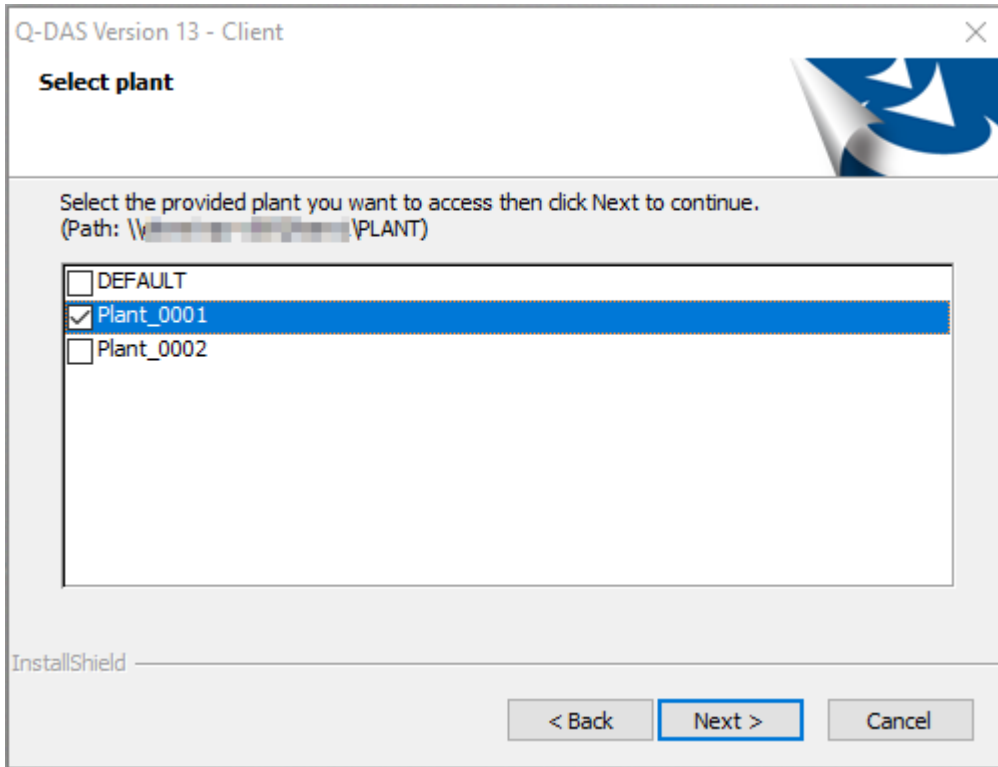


Select the respective version and click "Next >".



## 1.5 Selecting the plant

Version 13 gives you the opportunity to roll out several plants due to a central software architecture. In this case, you may select the respective plant in a client installation. It generally is "DEFAULT".



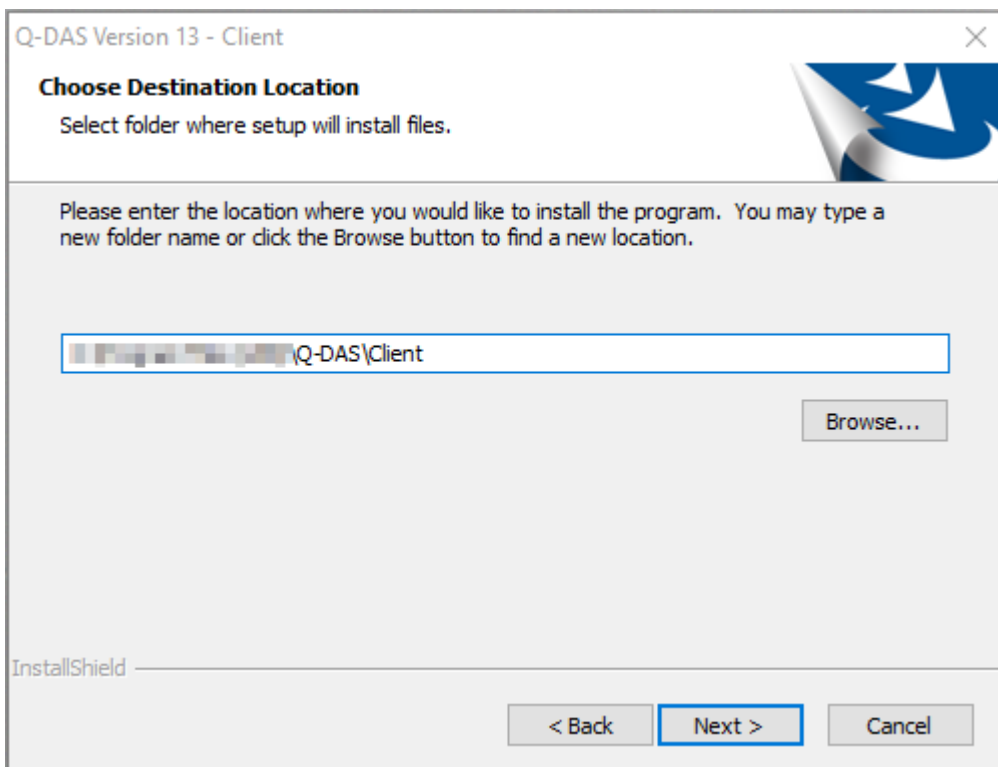
We recommend you define the structure in a fee-based workshop with the Q-DAS project team to roll out several plants on a central platform. Please inform you Q-DAS contact person or send an email to [info.qdas.mi@hexagon.com](mailto:info.qdas.mi@hexagon.com).

## 1.6 Target directory

Select the target directory for the installation of Q-DAS version 13.

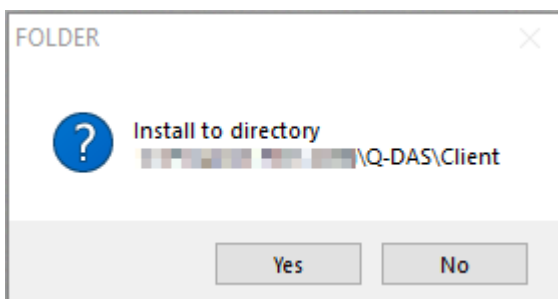
The default target directories of the 32-bit and 64-bit variants differ.

- 32-bit operating system: C:\Program Files (x86)\Q-DAS\CLIENT\*\*
- 64-bit operating system: C:\Program Files\Q-DAS\CLIENT\*\*



When you want to apply the target directory, click “Next >”.

A confirmation prompt opens.



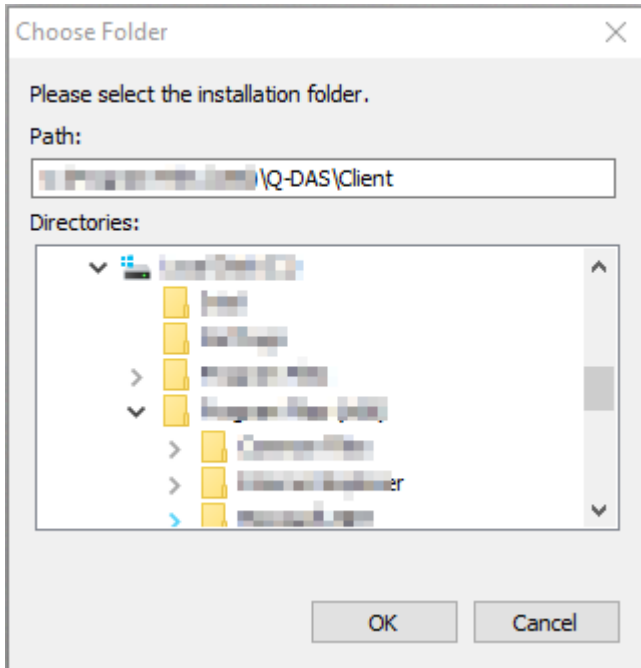
To select a different target directory, click “No”.

Confirm the selected target directory by clicking “Yes” and the installation continues.

### 1.6.1 Changing the target directory

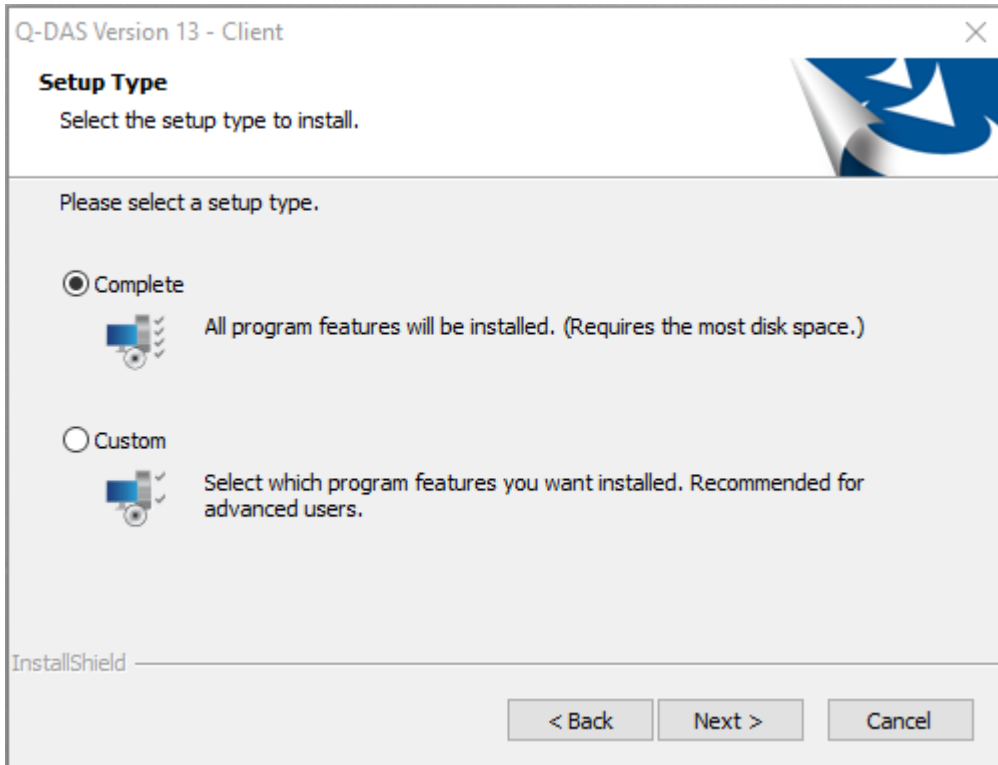
You may change the target directory by entering the path directly in the input field or by clicking “Browse”. We recommend you keep the default settings, i.e. the path the system provides.

You either enter the new path directly or select the respective directory.



## 1.7 Type of installation – setup type

There are two setup types available to you.



- “Complete” refers to the default installation. This type of installation installs all \*.INI files on the server and links them to the client computer. See the following chapters for more information.
- “Custom” means you have to select the single components you want to install and define the components you want to install locally. See the following chapters.

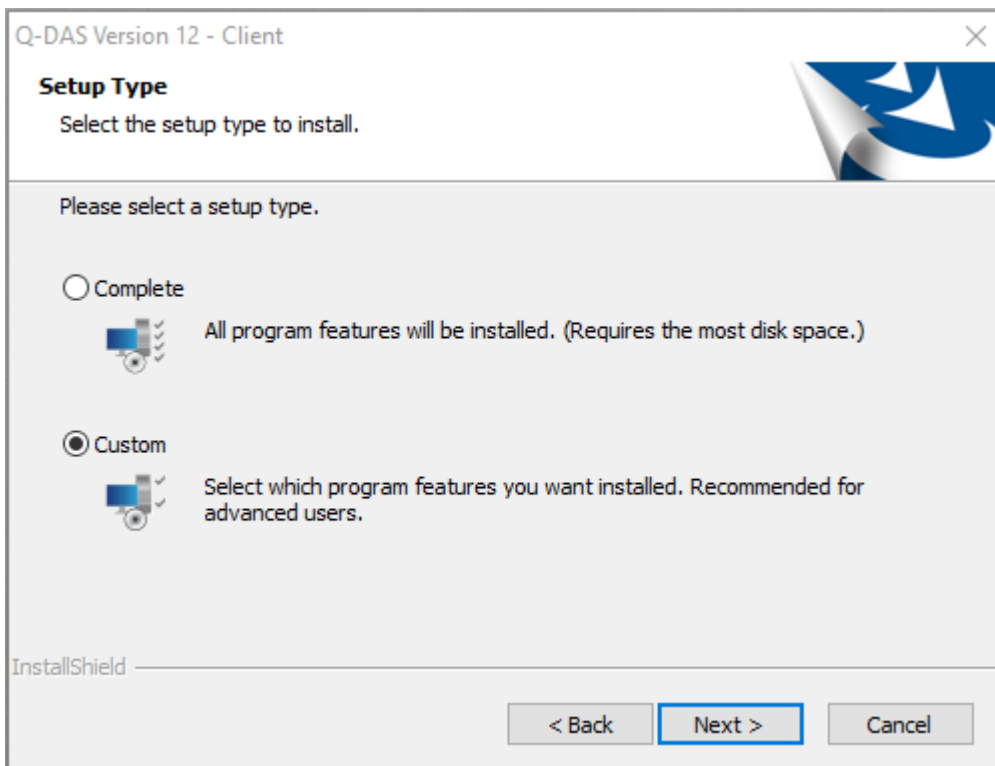
### 1.7.1 “Complete” setup type

A complete installation sets the following settings by default. In case you want to change them, select the customised installation (“Custom”).

- Creates all %Windows\_PC\_Name%\_V13\_%Productname%.INI files
- Saves all \*.ICO files for the start icons
- Does not store any programs or parts of it on the client
- The Launcher provides all products that have been registered during server provisioning.
- The registry entry for multiple starts of products are set to “Allow multiple start” / “Block products”.

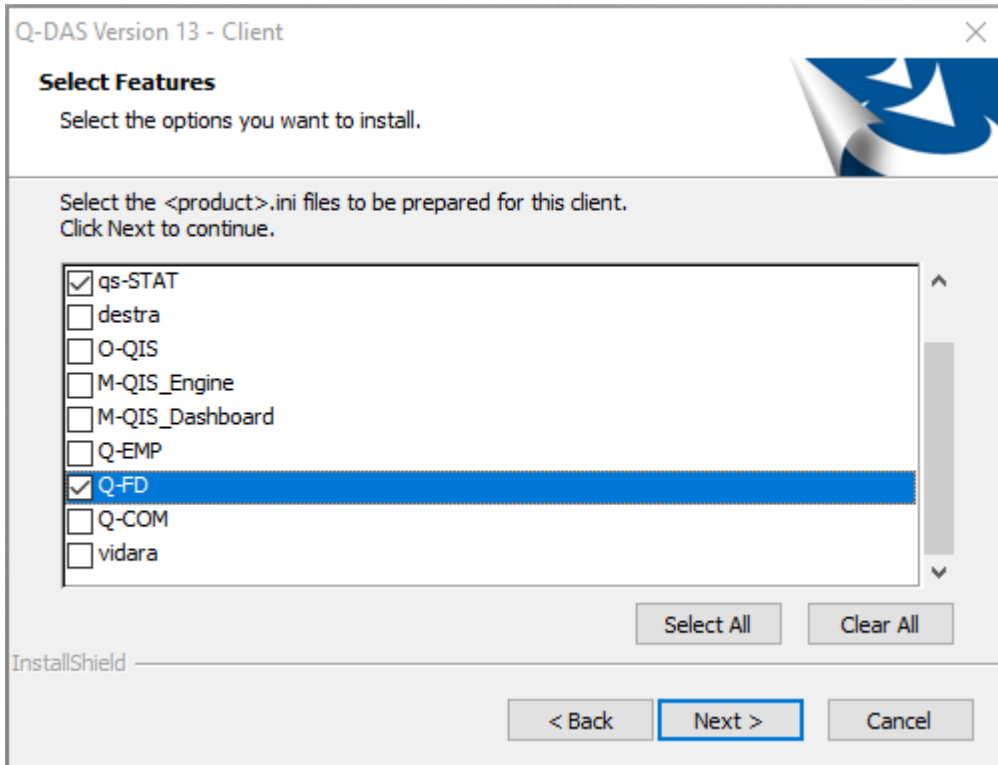
### 1.7.2 “Custom” setup type

Choosing the “Custom” installation type, you select the single components you want to install.



### 1.7.2.1 Product selection

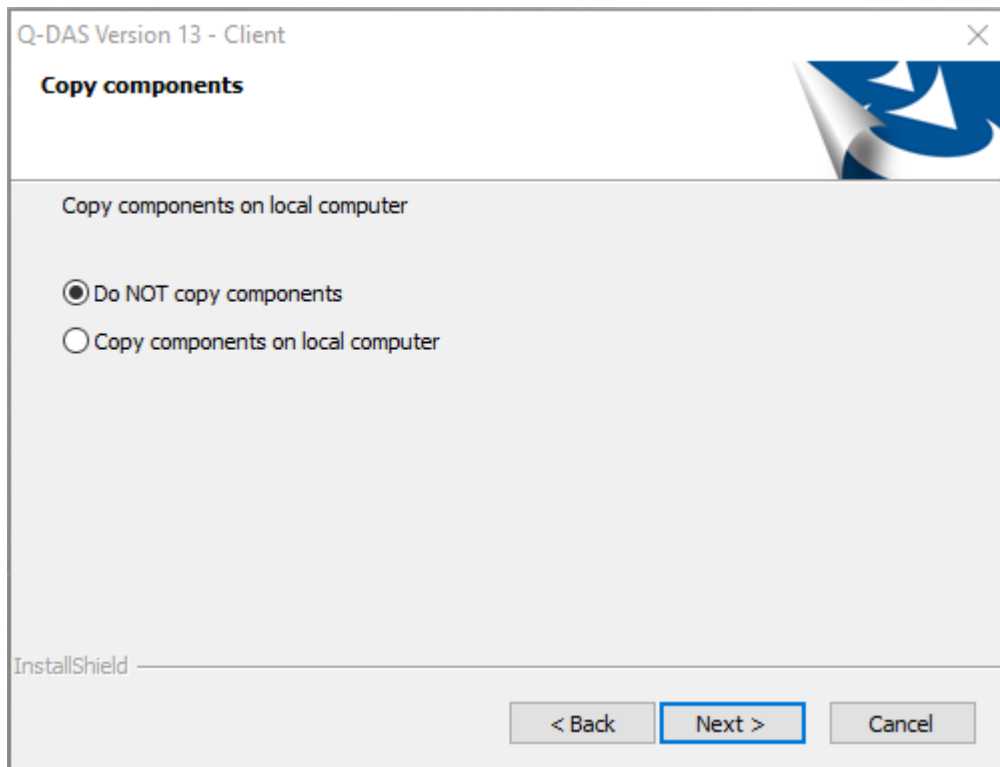
Use this dialogue box to select the products you want to prepare for the client. In case you have several Q-DAS products available when you start the roll-out on the server, but there is only a single product available for the client, e.g. qs-STAT, you may use this dialogue box to prepare the client for additional Q-DAS products, e.g. solara.MP. This approach makes it easier to share and distribute new products later on.



Select the respective products and click "Next >".

### 1.7.2.2 Local components

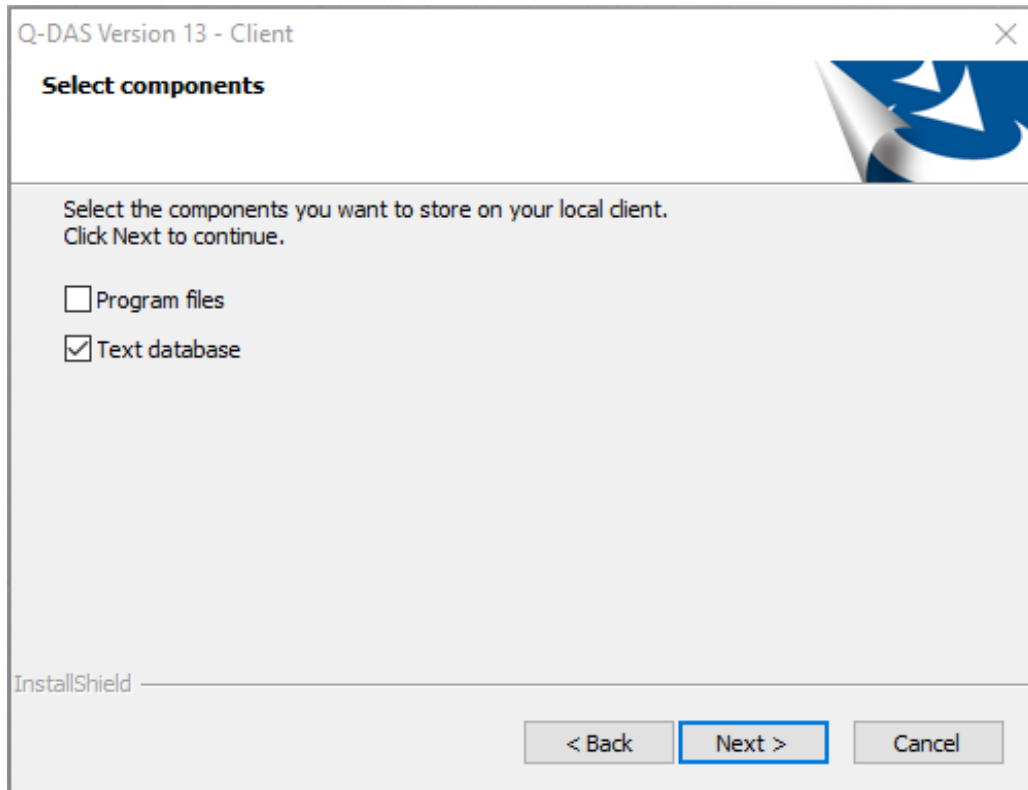
Select whether you want to store program files or the Access text database locally to improve the performance of the client. This type of installation requires respective access rights on the client. If an update is available, you will have to update the files on each client.



Select "Copy components on local computer" and you are prompted to select the components you want to copy on your local computer.

### 1.7.2.2.1 *Selecting the local components*

This dialogue box only opens when you selected the “Copy components on local computer” option. Use it to select the components you want to copy on your local computer.



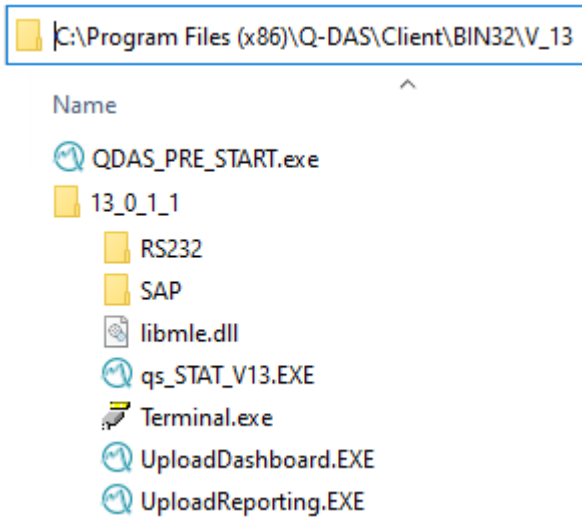
Caution: Storing the Access text database locally and applying a 64-bit variant, you have to ensure that the Microsoft component AccessDatabaseEngine\_X64.exe is installed on the respective client. Without this component, a 64-bit Q-DAS program is not capable of running.



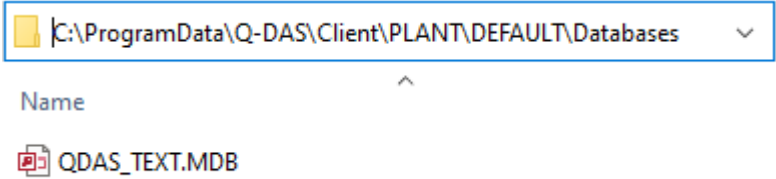
In case you use the 64-bit variant of Q-DAS applications, we recommend you do not apply Access databases. Applying the Microsoft 64-bit Access driver shall remain an exception. We recommend you transfer all databases to SQL or Oracle when you use the 64-bit variant of Q-DAS applications.



Check the "Program files" box to copy the following program files on your local computer.

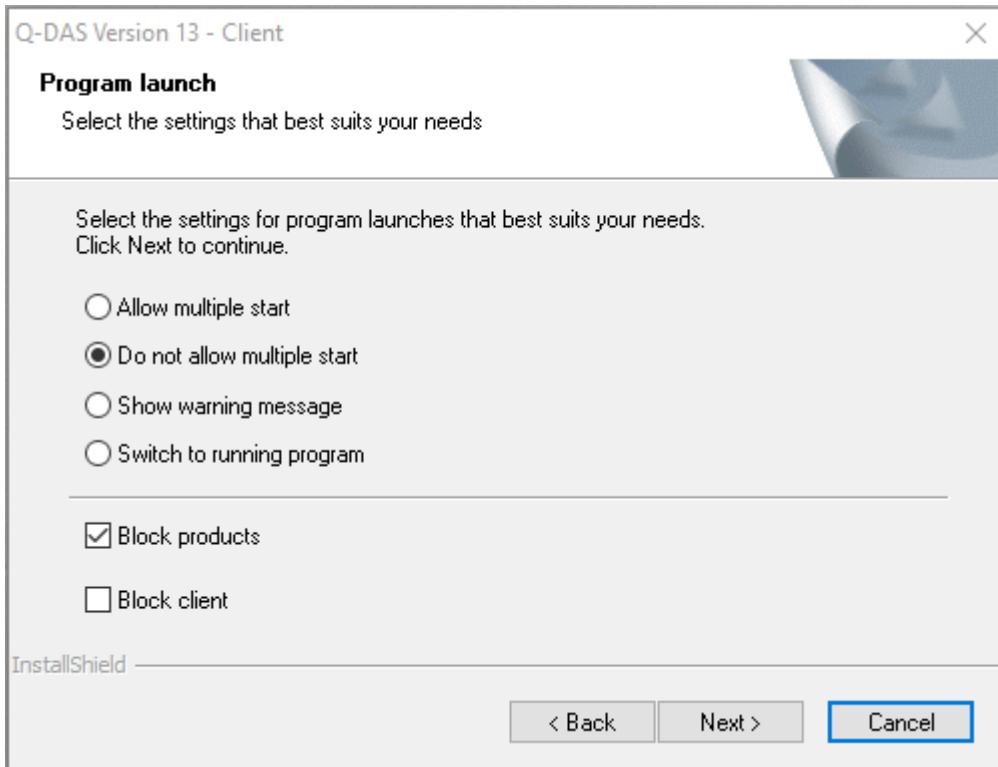


The "Text database" option copies the Access text database on your client.



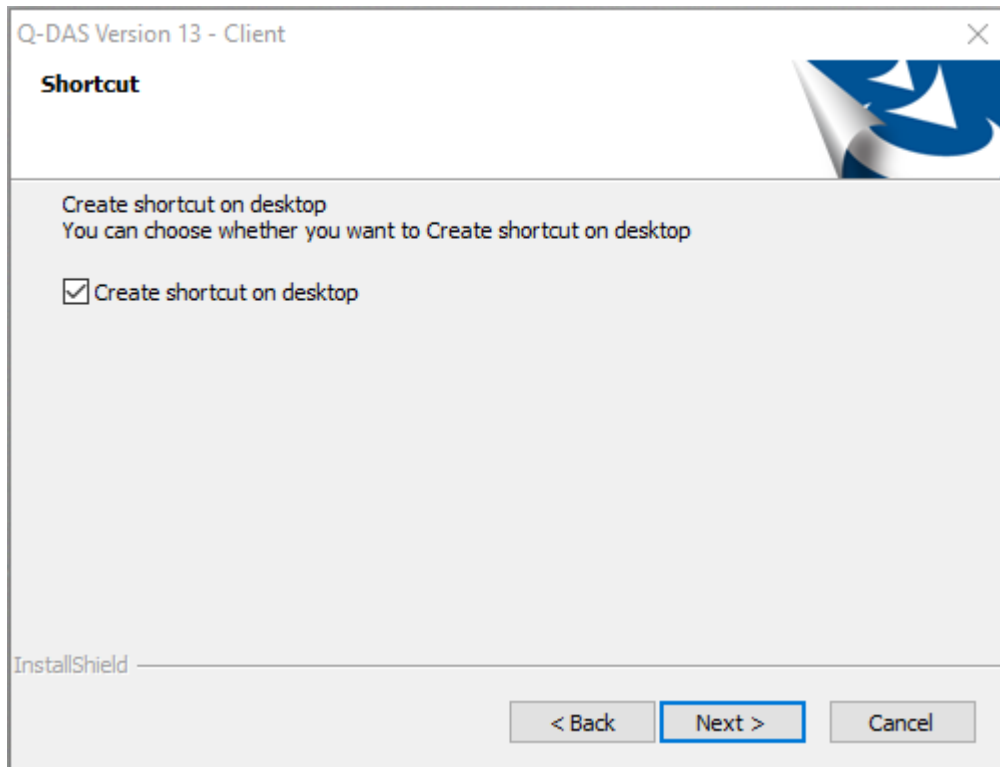
### 1.7.2.3 Program launch

Select whether you want to accept multiple product starts. "Do not allow multiple start" and the additional option "Block products" are enabled by default. In this case, you can start each product on a computer only once in the registry, but you may still run different products (e.g. qs-STAT and solara.MP) simultaneously. Activate the "Allow multiple start" to start the same product several times but consider that even the same product blocks will block several licences in this case.



## 1.8 Launcher desktop shortcut

Check the following box to create the desktop shortcut for the Q-DAS Launcher automatically.

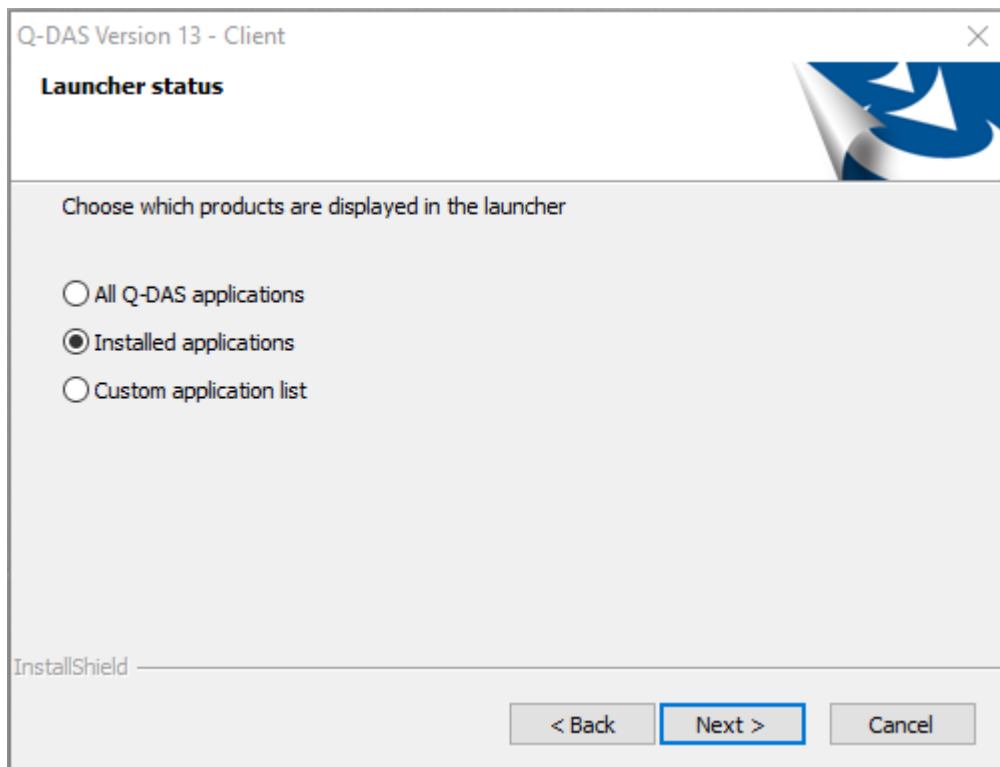


## 1.9 Launcher status

Use this dialogue box to configure, which products will be available in the Q-DAS Launcher.

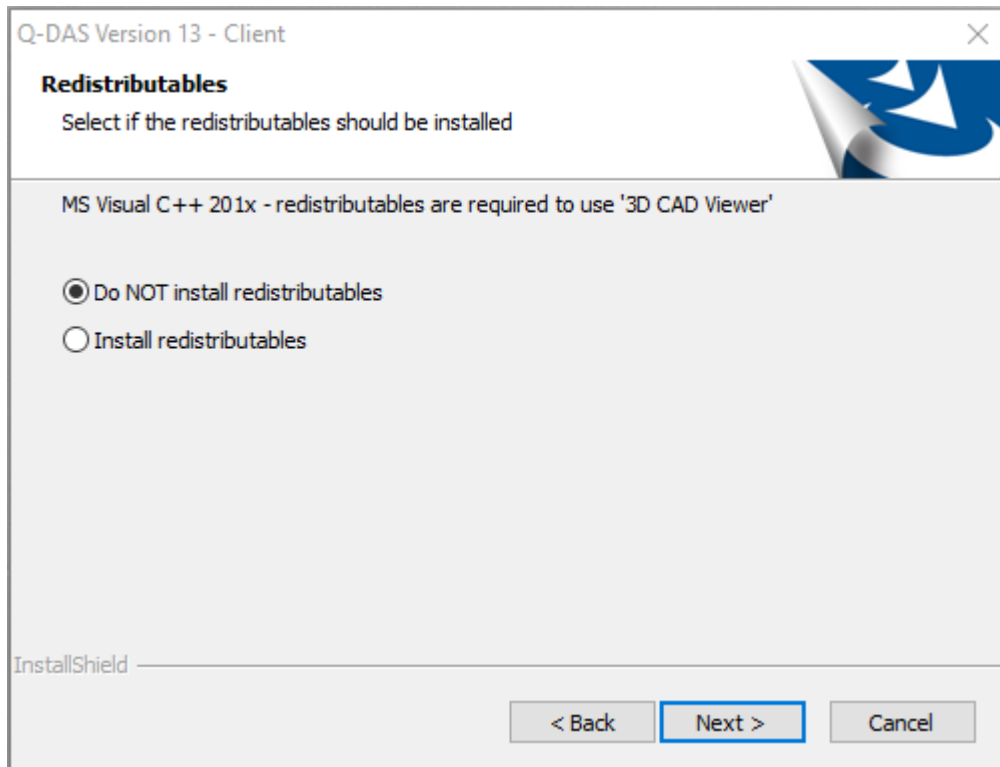
You may choose one of the following options.

- All Q-DAS applications  
All Q-DAS products are illustrated in the form of tiles in the Q-DAS Launcher. Products that have not been installed or are not registered are greyed out.
- Installed applications  
The Q-DAS Launcher only shows the products you installed.
- Custom application list  
The Q-DAS Launcher only shows the products installed on the computer. Products that are not registered are greyed out.



## 1.10 Redistributables

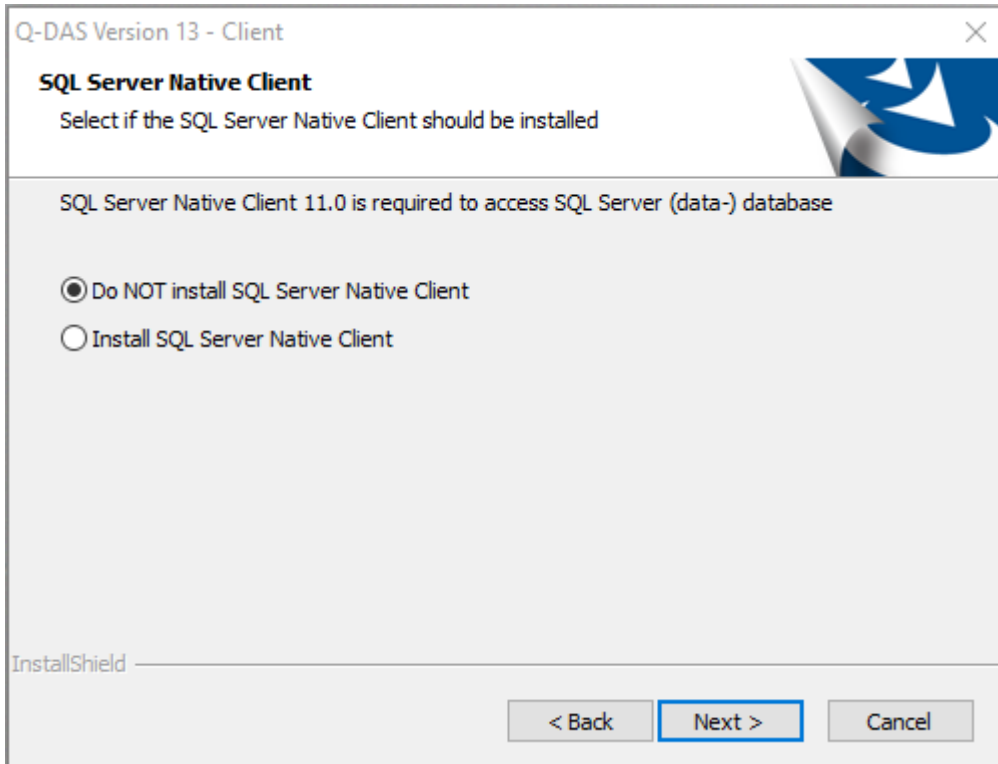
When you want to use Q-DAS 3D-CAD-Viewer, you have to install Microsoft Visual Studio Redistributables. Select whether you want to install them automatically.



Choose the respective option and click "Next >".

## 1.11 SQL Server Native Client

Applying SQL databases requires access to the data of the SQL Server Native Client. Since version 12.0.2.1, this client is provided by default. In case the SQL Server Native Client is not available yet on the respective computer, you select whether you want to install it automatically.

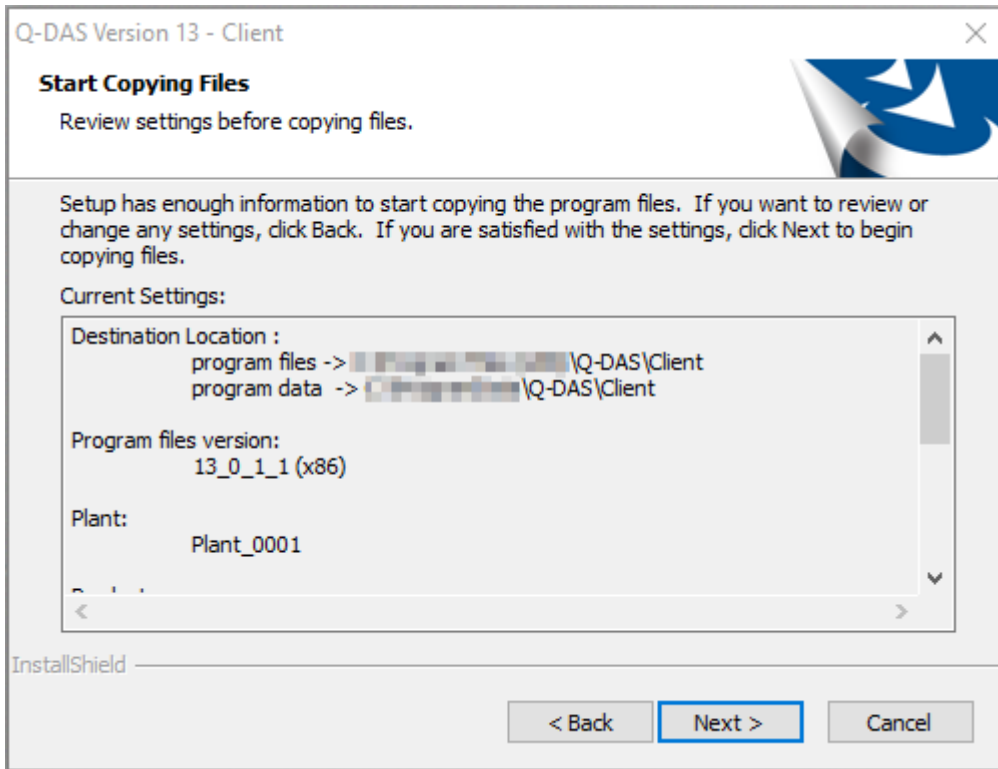


Choose the respective option and click "Next >".

## 1.12 Starting the installation

A preview shows the settings you adjusted.

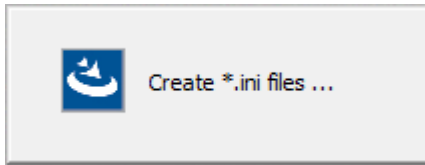
To change these settings, click the “< Back” button until you see the settings you want to readjust.



Start the installation by clicking “Next >”.

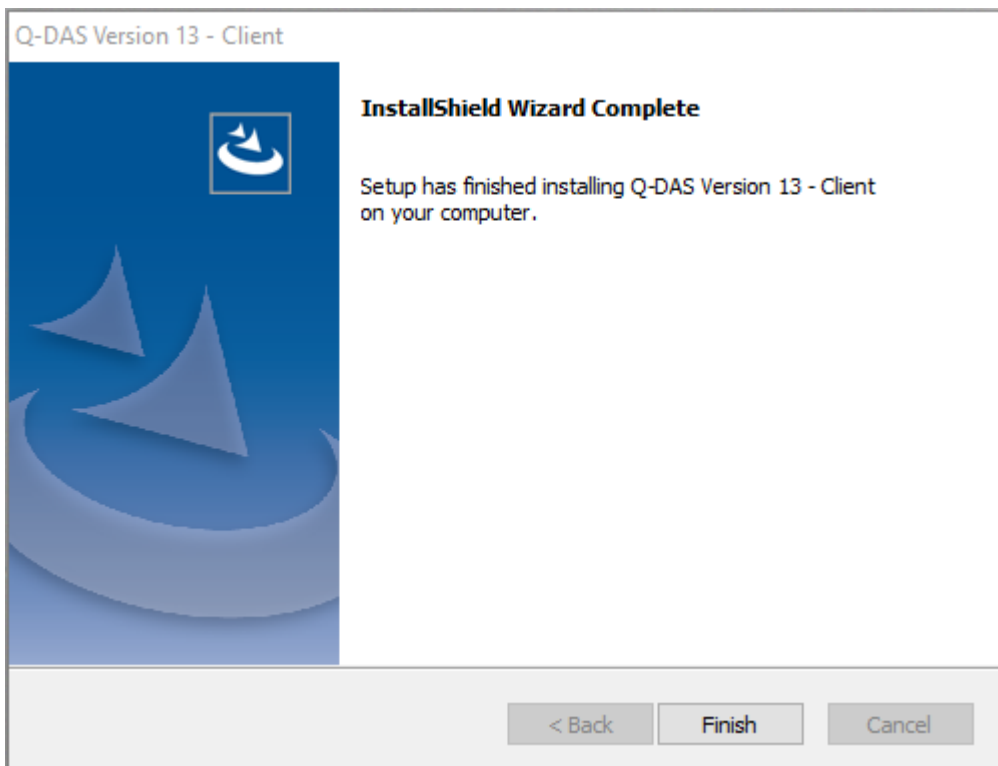
## 1.13 Generating the product INI

Depending on the number of products you selected, generating the INI files for the client might take some time.



## 1.14 End of the installation

After you completed the installation successfully, the following message opens.



Click "Finish" to close the setup.



## 1.15 Launcher

Use the Q-DAS Launcher to start Q-DAS applications in case of client provisioning.

Depending on the settings you adjusted, it either shows all Q-DAS products, only the Q-DAS products you installed or a user-specific selection of Q-DAS products. In general, the Q-DAS Launcher shows all products you prepared by default (see chapter [Product selection](#)).

