

INSTALLATION CONCURRENT NETWORK SERVER

87298374 0987298374982739
8470 2 **Q-DBM** 7 1545 82138 12
7198723987 987239 98729872
PROCELLA 234 154 13 544 565
9872 2719827 7 27198723987
45 8912 687723 **VIDARA** 27198
21245 666 1214432 329 **Q-QIS**
928 234 345 344 4718723987
0187309 445 455 4877298374
M-QIS DASHBOARD 772728498
81 4981 **DESTRA** 918 2589 23
59 **QS-STAT** 49814981 45598
M-QIS ENGINE 49983 259 1547
7487 29837409872 98374982
73984702 **SOLARA.MP** 987349
9283 120 38 485 0 2 38 49081



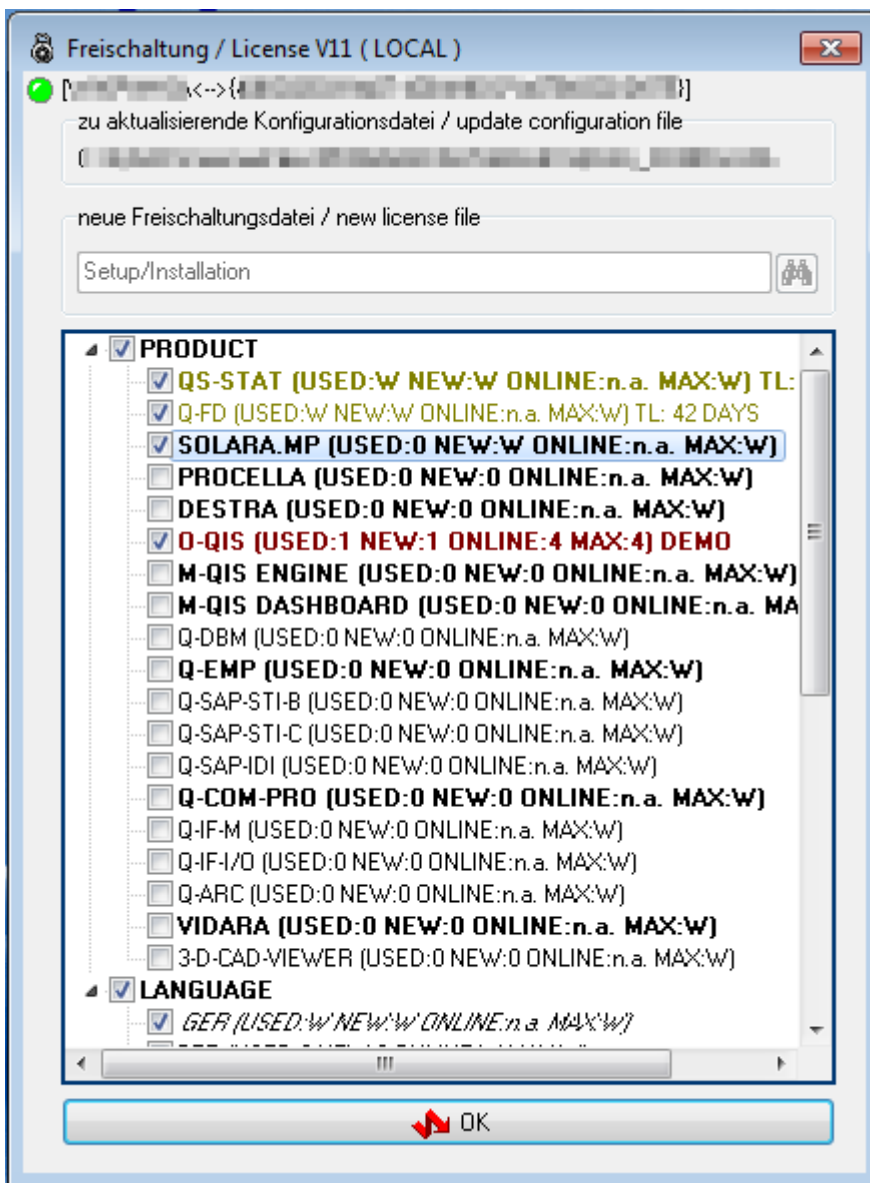
CONTENTS

- 1 Preface – differences between products and Options 3**
- 2 Architecture 4**
 - 2.1 How program files are arranged 4
 - 2.1.1 INI 5
 - 2.1.2 BIN32 / BIN64 5
 - 2.1.3 Plant..... 6
- 3 Server installation of Version 12 7**
 - 3.1 Start the installation 7
 - 3.2 Licence agreement 8
 - 3.3 Select licence 8
 - 3.4 Setup type 9
 - 3.5 Select architecture 9
 - 3.6 Already installed Q-DAS versions 10
 - 3.7 Target directory 11
 - 3.7.1 Change 12
 - 3.8 Select features 12
 - 3.9 Define additional data fields 13
 - 3.10 Support email address 14
 - 3.11 Redistributables 15
 - 3.12 SQL server native client 16
 - 3.13 Start the installation 17
 - 3.14 Select the products to be installed 18
 - 3.15 Online registration 19
 - 3.16 End of installation 20
 - 3.17 Launcher 20
- 4 Access Authorisation 21**

1 PREFACE – DIFFERENCES BETWEEN PRODUCTS AND OPTIONS

There are different types of installations for options and products. You have to apply the setup for initial installation/server provisioning. You may use the licence manager to add products and options.

The window below shows that products are displayed in bold letters to distinguish them from options. Licensed products and options are displayed in black, time-limited test licences in yellow and expired ones in red.



2 ARCHITECTURE

Compared to previous versions, Q-DAS software installations have a basically new architecture.

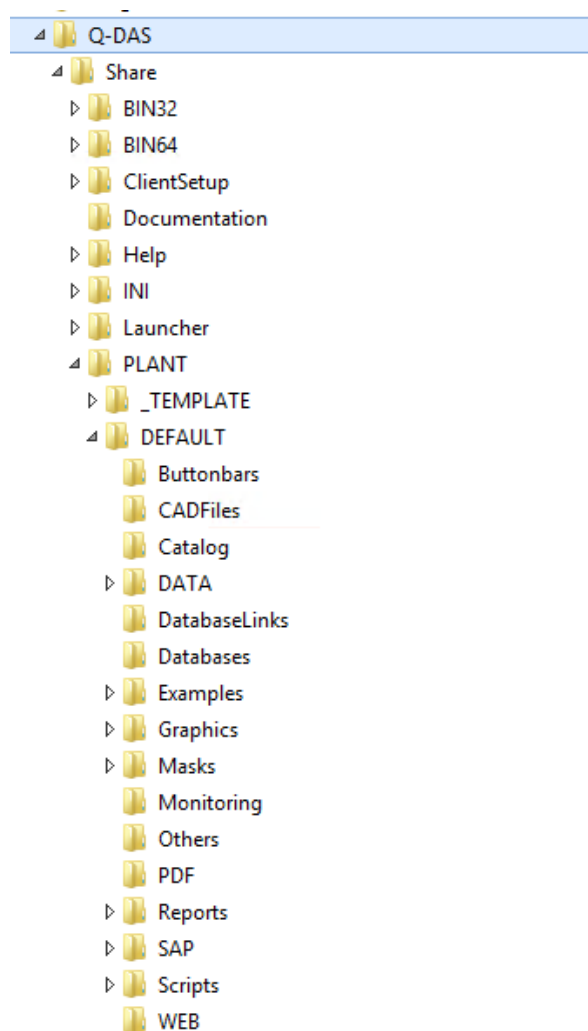
2.1 How program files are arranged

The Q-DAS folder has a subfolder referring to the respective installation variant.

"Share" for server provisioning

"Local" for local installation

"Client" for client installation

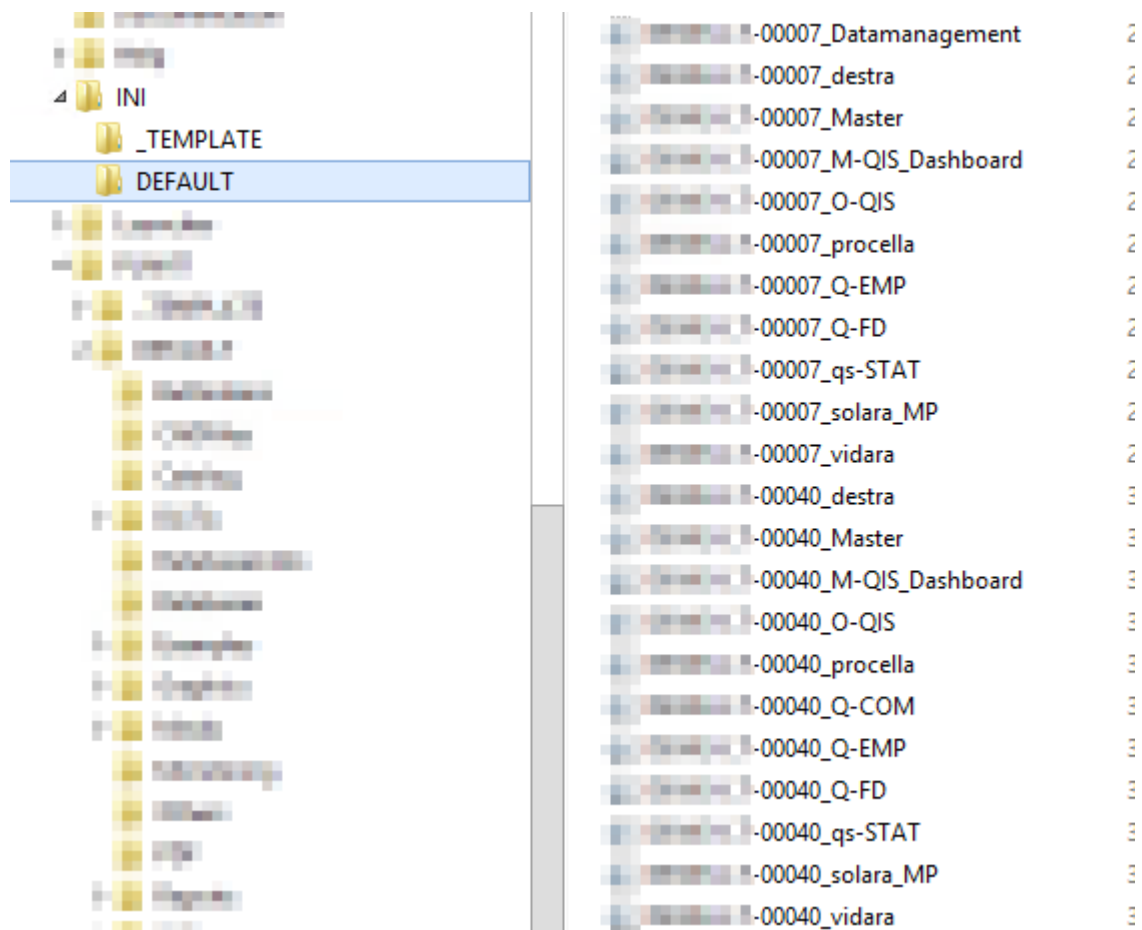


This arrangement is strictly based on binary data that are always provided as 32-bit and 64-bit variants for servers; however, when a local or client installation is concerned, you have to define the respective variant during the installation.

2.1.1 INI

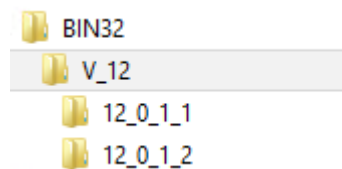
The INI directory contains all INI files for the start of products. This applies to local installations and to server-client installations.

In case of server-client installations, an associated subfolder allocated to the Windows computer name contains the INI files of a specific plant.



2.1.2 BIN32 / BIN64

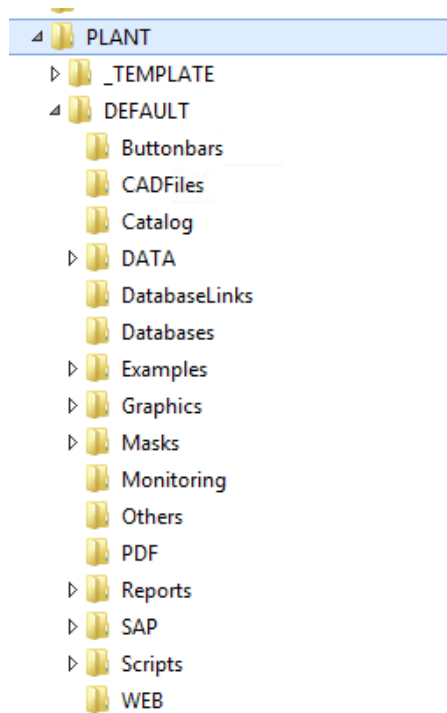
The BIN32/BIN64 folder has a subfolder containing the respective software version per minor release or test version.



2.1.3 Plant

The PLANT folder includes any files that can be edited by customer. The available structure cope with the parallel operation of several plants. This type of structure is recommended in a WTS or Citrix environment and shall be defined in a fee-based workshop with the Q-DAS project team. For reasons of performance, we do not recommend you access the network of a different location based on a server-client solution.

To define the structure, contact a responsible person of the Q-DAS project team or send an email to info.qdas.mi@hexagon.com.



The “_Template“ folder only serves as a master and is not part of a normal server-client installation.

3 SERVER INSTALLATION OF VERSION 12

3.1 Start the installation

Insert the DVD into your DVD drive. The welcome screen opens automatically.

If it does not open automatically, take the following steps.

- Open the Windows Explorer and select the respective drive. Double click the SETUP_V12.exe to start it
- or
- click Start|Execute.
- Enter the letter of the DVD drive in the “Open” input field and add the file name SETUP_V12.exe.

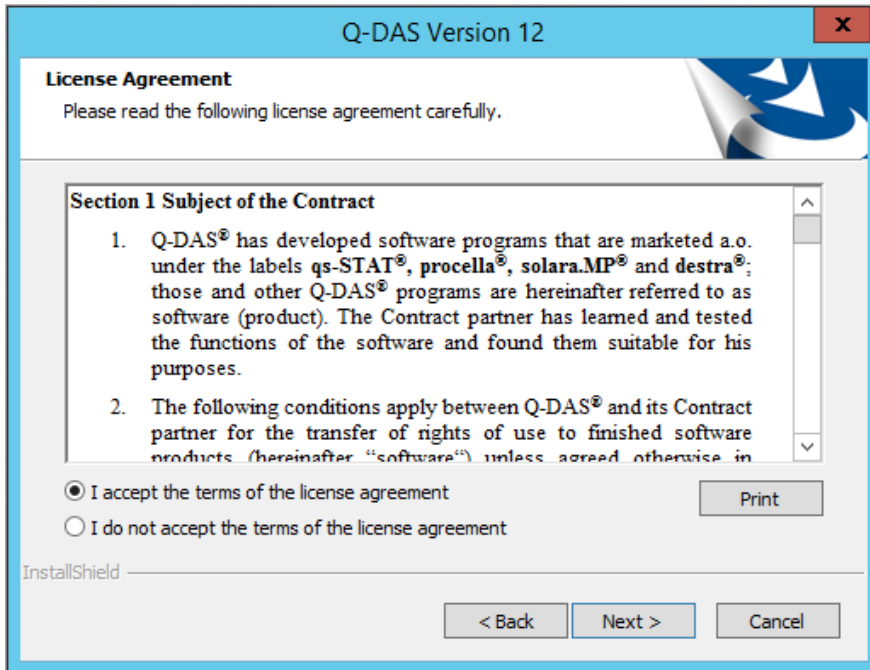
Example: *F:\ SETUP_V12.exe*



Click “Next >” to start the installation of version 12.

3.2 Licence agreement

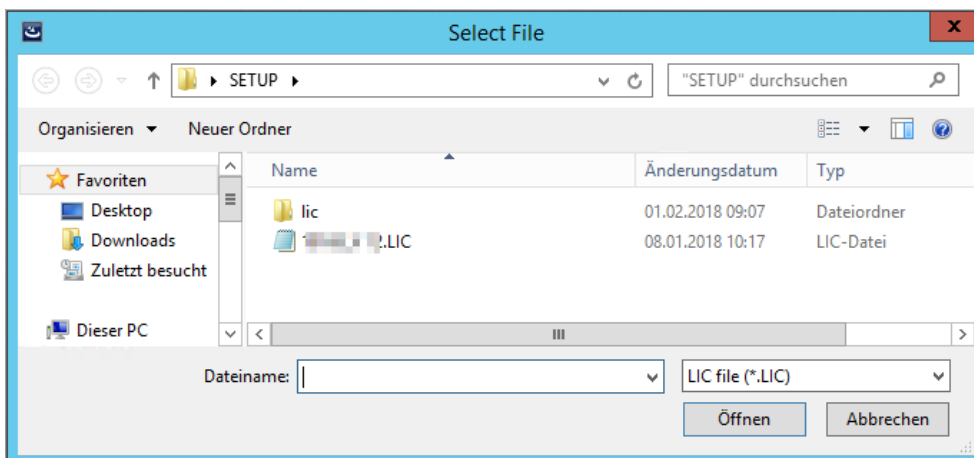
If you accept the licence agreement, select "I accept the terms of the license agreement" to enable the "Next >" button.



Click "Next >" to continue the installation.

3.3 Select licence

Select your licence file (*.LIC) that is available on the DVD (or in the email) you received by default.



After you selected the respective *.LIC file, click on "Open".

3.4 Setup type

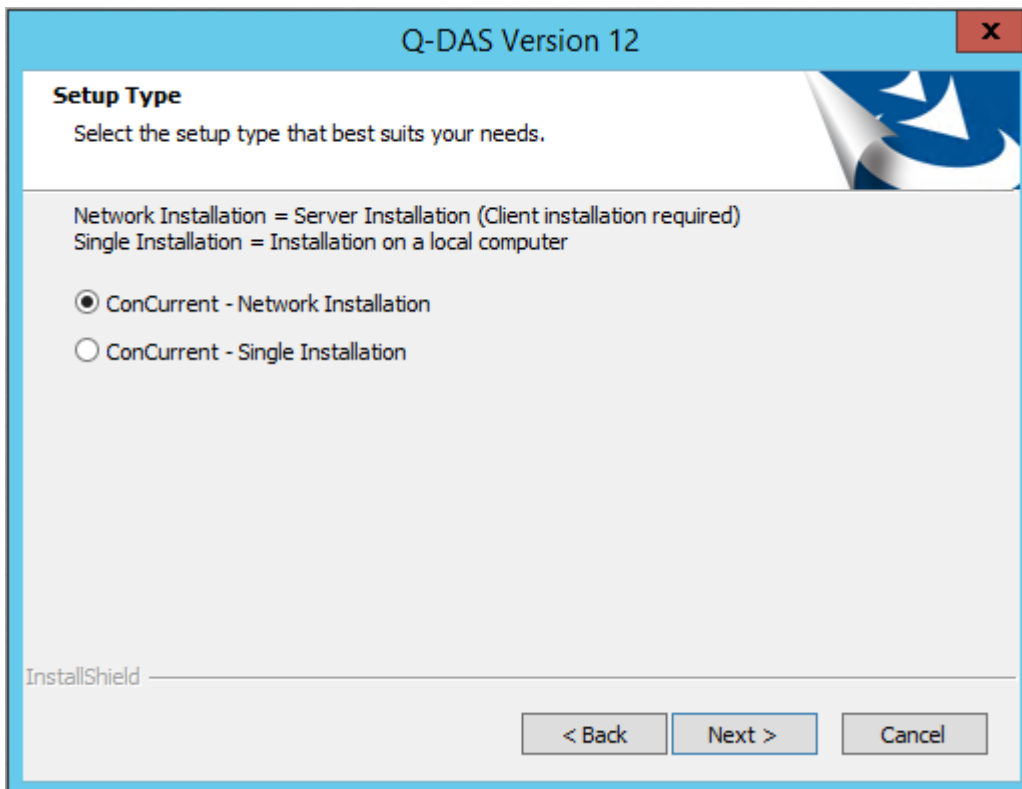
Select the setup type.

ConCurrent – Network Installation

= installation / provisioning on the server and subsequent client installations on any number of computers but with the number of simultaneous user registrations restricted to the number of licences.

ConCurrent – Single Installation (local single installation is described in a separate document)

= single installation



Please consider that you can only apply **one of these two setup types** on a computer. This is the time to choose the final setup type for the computer/server!

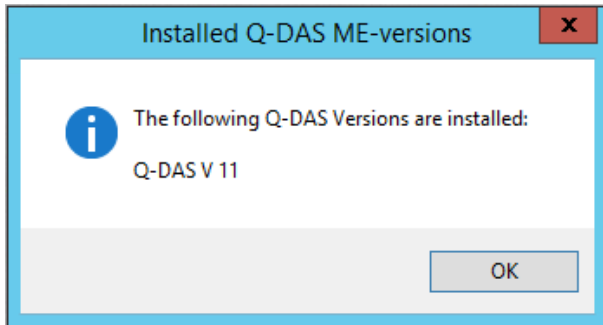
Select a setup type and click “Next >”.

3.5 Select architecture

Compared to a local single installation or a client installation, a server installation always installs the 32-bit and the 64-bit variant. You only have to choose one of these variants in any subsequent client installation (the client installation is described in a separate document).

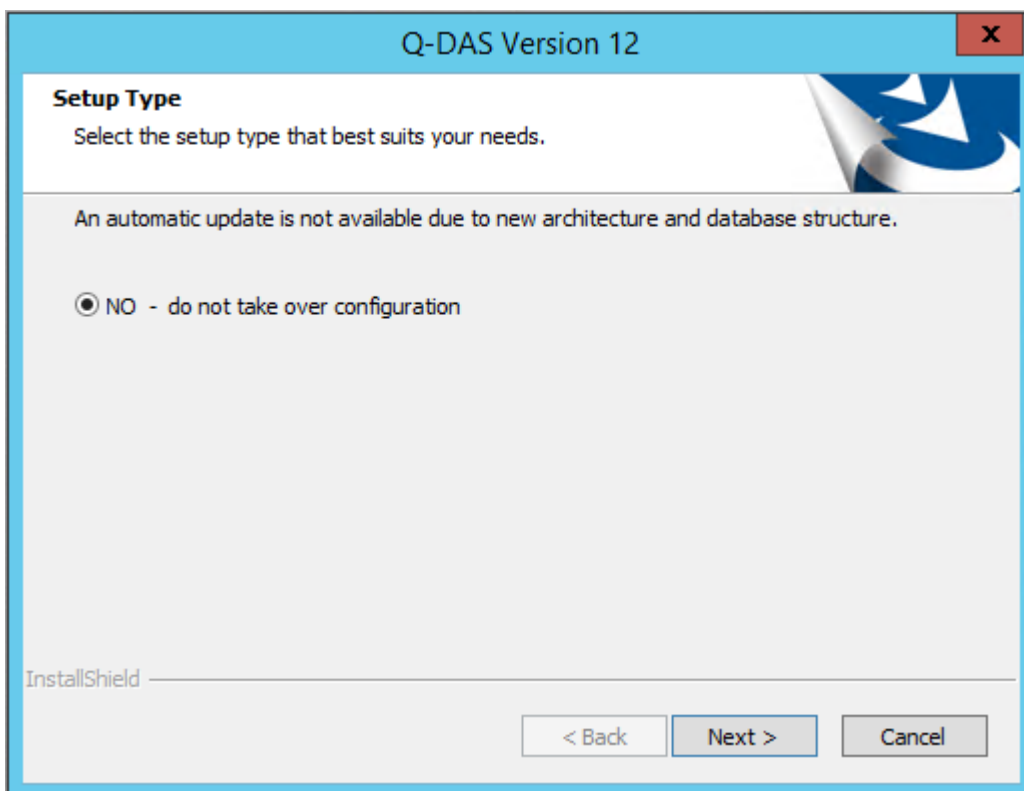
3.6 Already installed Q-DAS versions

In case you already installed some Q-DAS versions on your computer, the system informs you about any version installed.



Click "OK" to continue the installation.

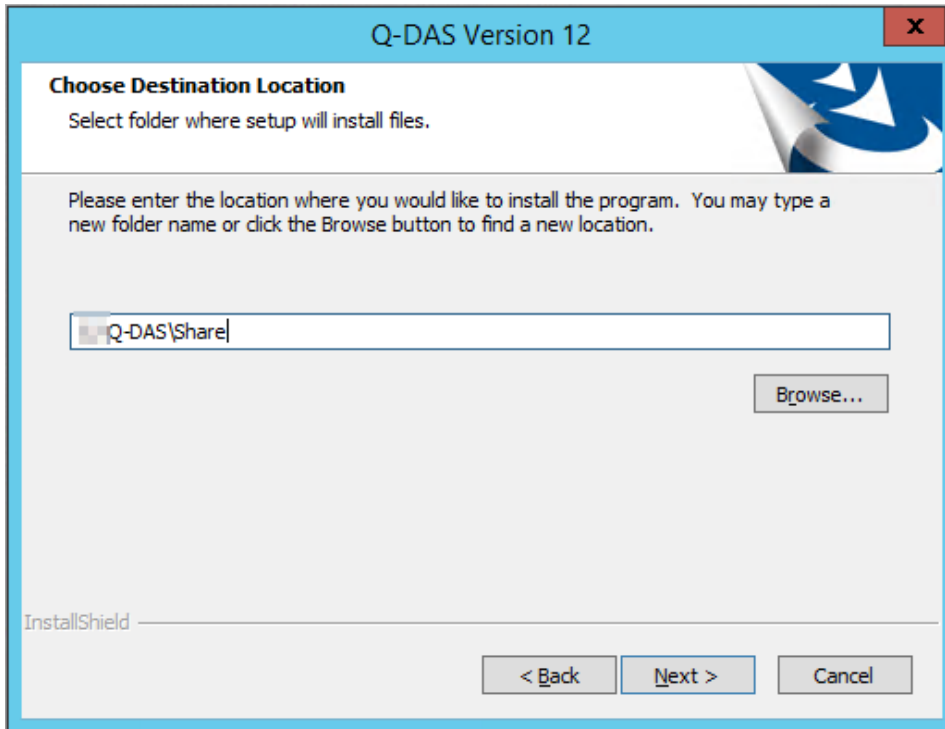
Since the system architecture and database structures changed considerably, the system no longer offers the option to transfer configurations (databases, input masks, reports, etc.) of previous versions automatically. There is, however, a separate document available explaining how to upgrade version 11 to version 12.



Click "Next >" to start the installation of version 12.

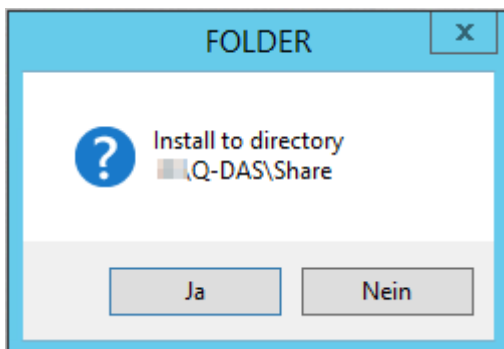
3.7 Target directory

Select the target directory for the installation of Q-DAS version 12.



If you want to apply the specified target directory, click “Next >”.

A confirmation prompt opens.



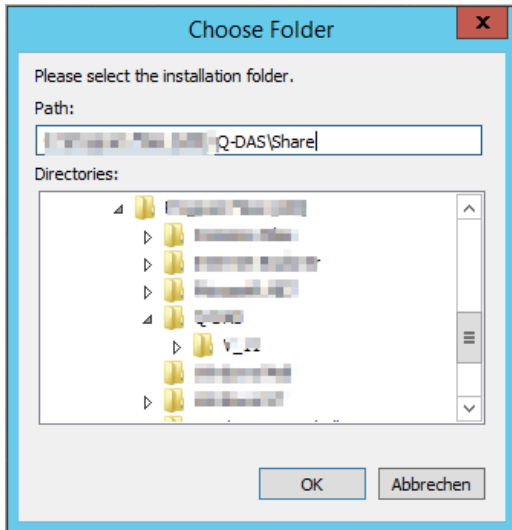
If you want to change the target directory, click “No”.

Confirm the selected target directory by clicking on “Yes” and continue the installation.

3.7.1 Change

Change the target directory by entering the path directly in the input field or by clicking the “Browse” button. We recommend you keep the default settings, i.e. the path the system provides by default.

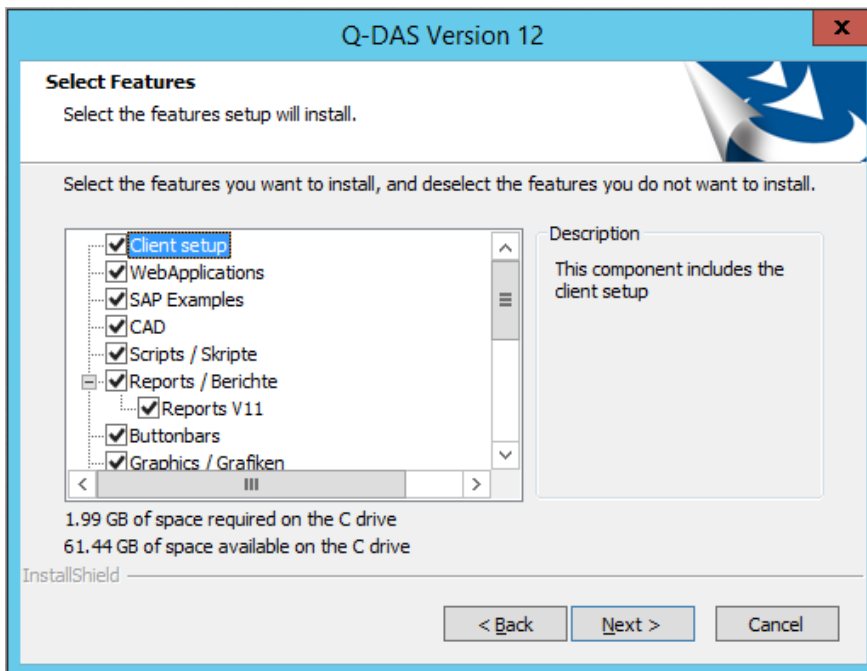
Enter the new path directly or select the respective directory.



Click the “OK” button.

3.8 Select features

Select the single features you want to install on your server.



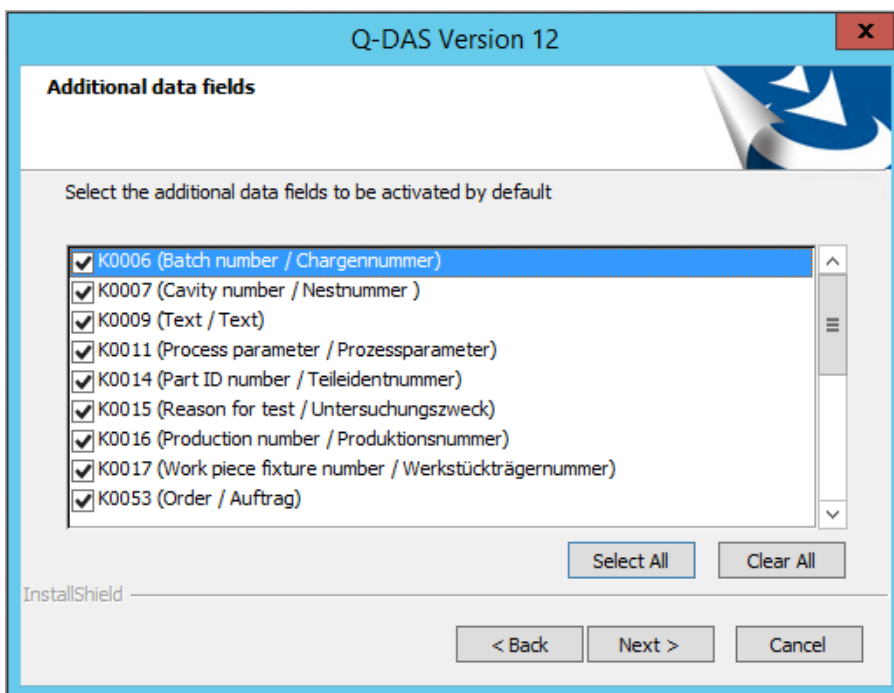


We recommend you keep the default settings (all features selected).

Select the respective features and click “Next >”.

3.9 Define additional data fields

Activate the additional data fields to be available in the software. The initialising file defines any disabled additional data fields as “deactivated”.



The following additional data fields are enabled by default:

- K0006 = batch number / ident number
- K0007 = cavity number / spindle number
- K0009 = text
- K0011 = process parameter
- K0014 = part ID number
- K0015 = reason for test
- K0016 = production number
- K0017 = work piece fixture number
- K0053 = order number



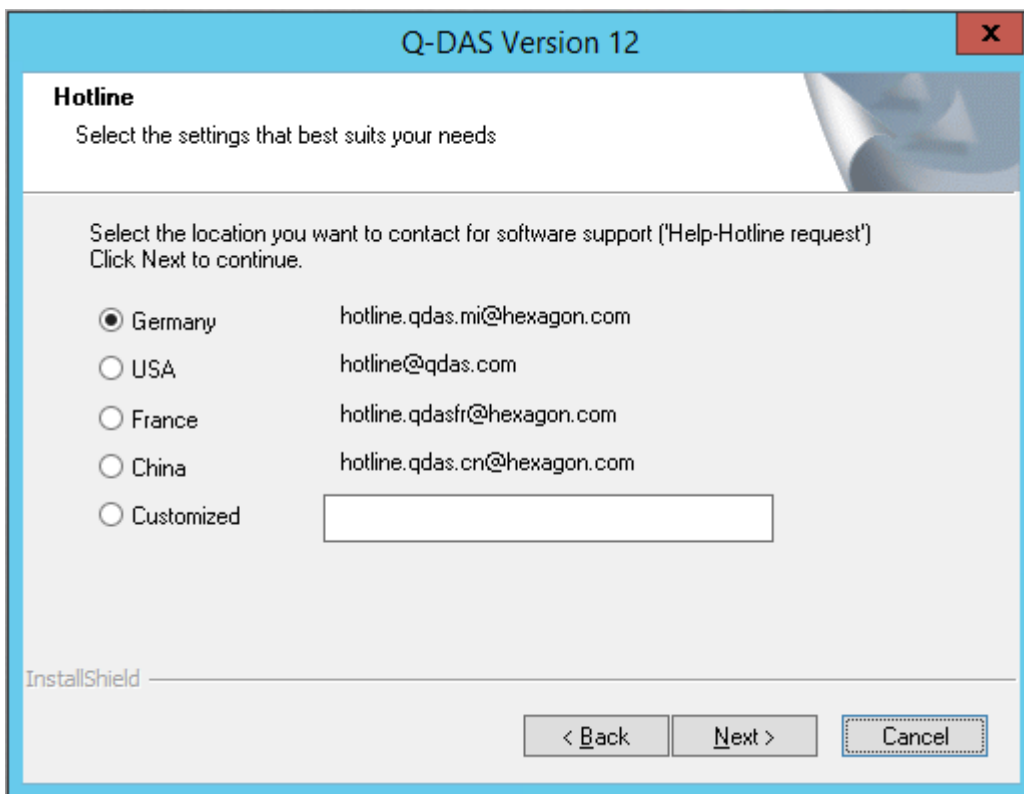
Activate these additional data fields to make them available in the software. Please consider that you might still have to create them in the database! Information about how to create additional data fields in the database are available in in the Q-DAS software documentation under Error messages|K00xx cannot be written (<https://www.q-das.de/en/service/support-hotline>).

For reasons of performance and database size, we recommend you activate only the additional data fields you need.

Click “Select All” to activate all additional data fields. By clicking “Clear ALL”, you deactivate all additional data fields. Activate all the additional data fields you need and click “Next >”.

3.10 Support email address

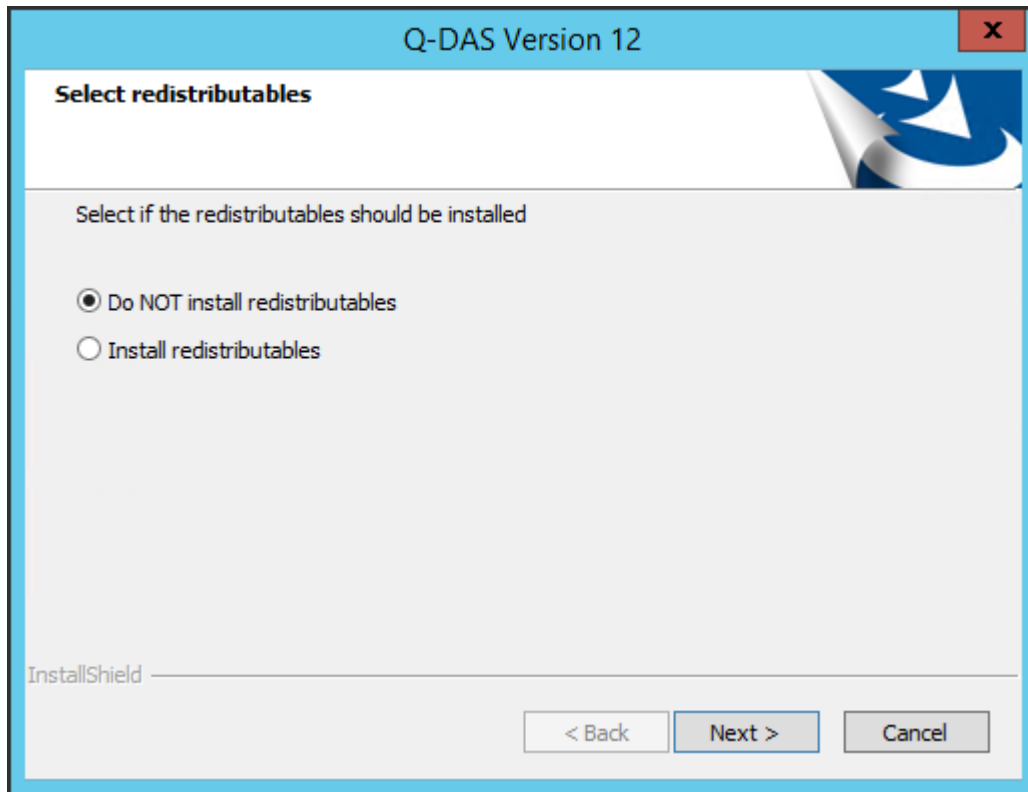
Specify the location and associated email address for hotline requests. The German hotline team at hotline.qdas.mi@hexagon.com is enabled by default.



The screenshot shows a dialog box titled "Q-DAS Version 12" with a close button (X) in the top right corner. The dialog is titled "Hotline" and contains the following text: "Select the settings that best suits your needs". Below this, it says "Select the location you want to contact for software support ('Help-Hotline request') Click Next to continue." There are five radio button options, each with a corresponding email address: "Germany" (selected) with "hotline.qdas.mi@hexagon.com", "USA" with "hotline@qdas.com", "France" with "hotline.qdasfr@hexagon.com", "China" with "hotline.qdas.cn@hexagon.com", and "Customized" with an empty text input field. At the bottom left, it says "InstallShield". At the bottom right, there are three buttons: "< Back", "Next >", and "Cancel".

3.11 Redistributables

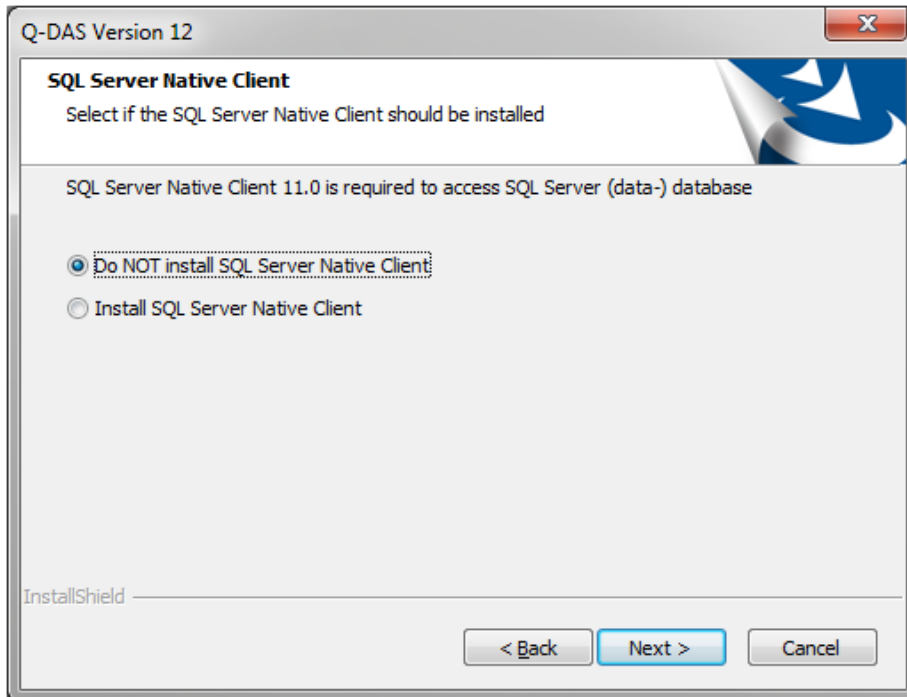
When you want to apply the Q-DAS 3D CAD Viewer, you have to install the Microsoft Visual Studio Redistributable component. Select whether you want to install it automatically.



Activate the respective option and click "<Next>".

3.12 SQL server native client

Applying SQL databases, you need the SQL server native client to access data. Since version 12.0.2.1, this client is included in the Q-DAS installation by default. In case you do not have the SQL server native client available yet on your computer, you may install this component automatically.



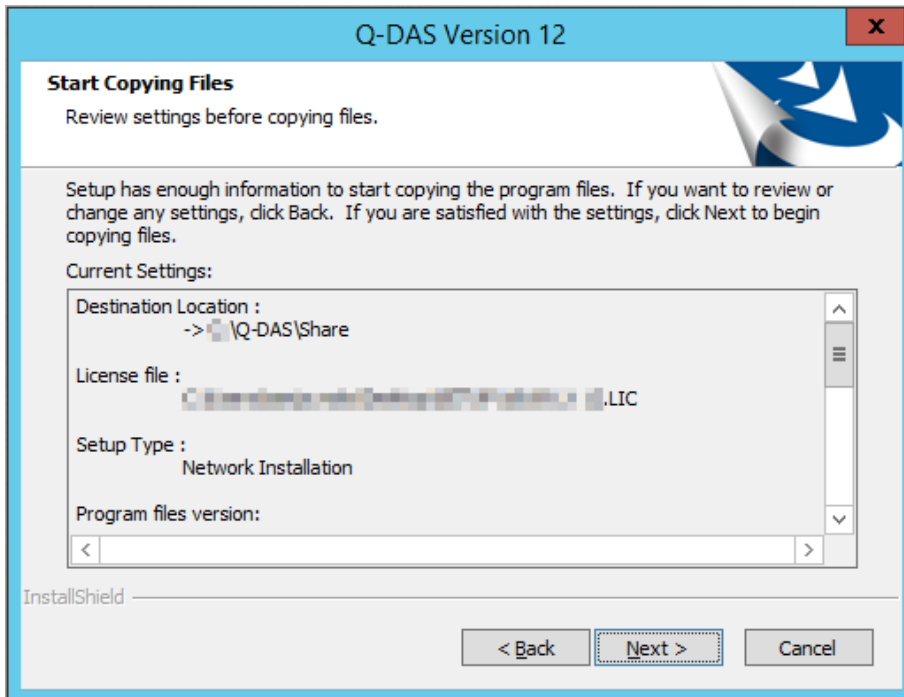
Select the respective option and click "Next >".

3.13 Start the installation

A preview shows the settings you adjusted.

To change the settings, click on “< Back” to repeat one of the previous steps.

Since a server installation always installs the 32-bit and the 64-bit variant, the overview of the installation settings only shows the path of the 32-bit variant.



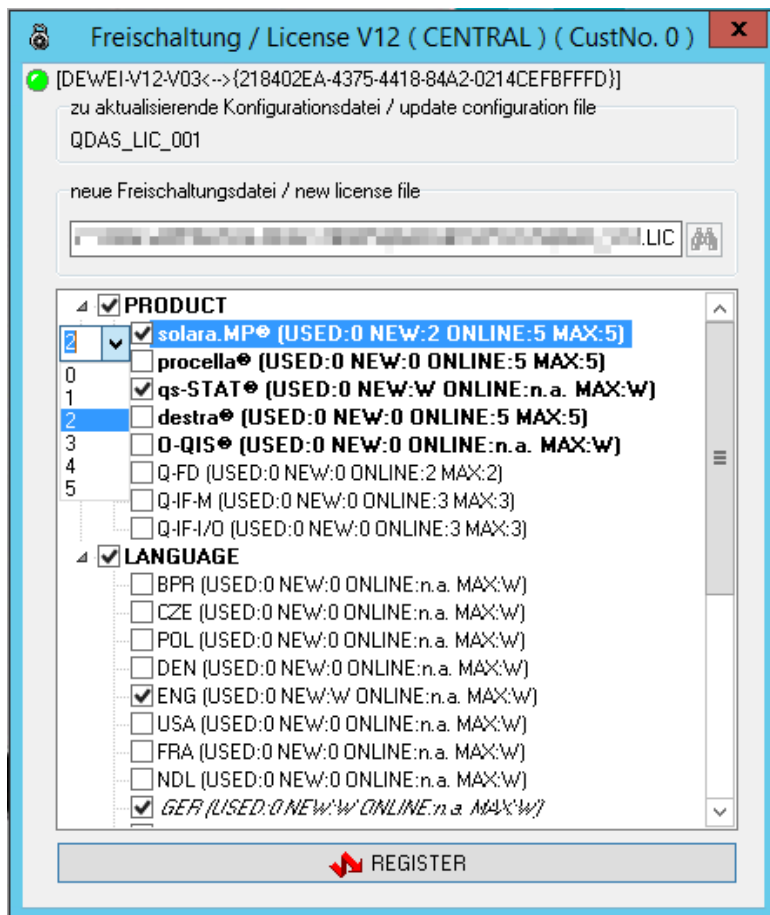
Start the installation by clicking “Next >”.

3.14 Select the products to be installed

You have to specify the number of licences for a server installation.

All products, options and languages are disabled by default. Check the boxes of the desired products/options/languages and right-click on the activated product/option/licence. A drop-down menu appears right next to the checkbox and helps you choose the respective number of licences.

The window shows the specified number of licences next to “NEW” (solara.MP 2 of 5 licences). Activate the respective products/options/languages, change the number (if required) and confirm the installation by clicking “OK”.



In this example, we selected Q-DAS software products qs-STAT (plant licence) and solara.MP (2 licences) and the English language licence in addition to the default language German.

Please consider that you cannot change the number of licences for the default language (German “GER” in this case). The system generates this number automatically.

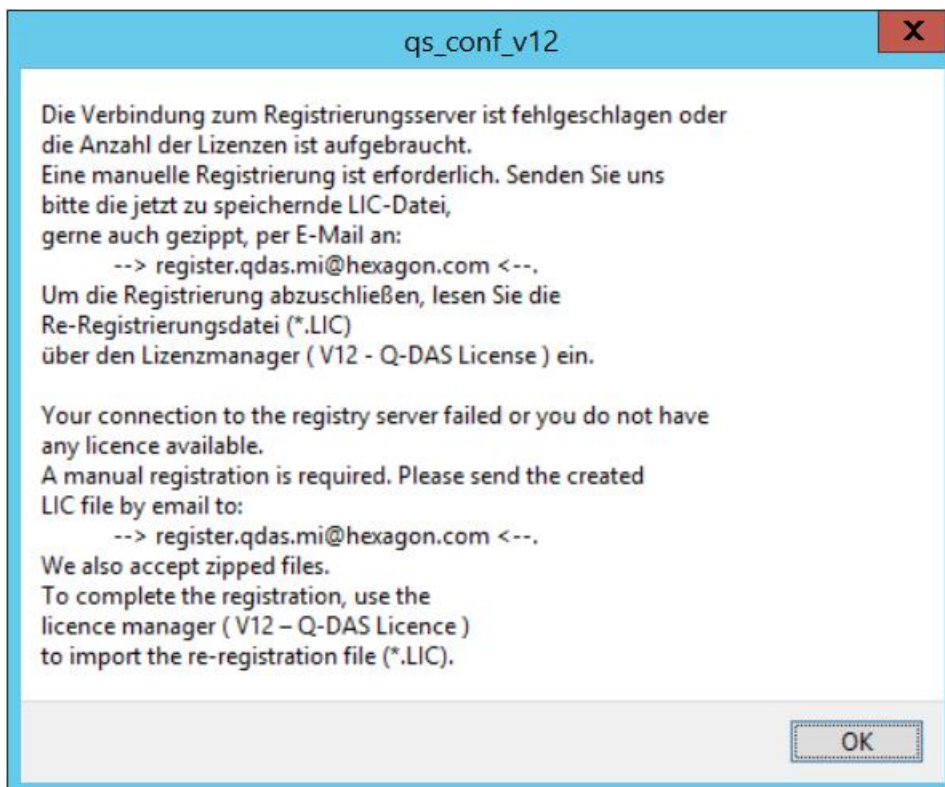
To be able to uninstall an option, you have to uncheck the corresponding box and set the associated drop-down menu to zero.

3.15 Online registration

The online registration starts after the product installation.

When your computer is connected to the Internet during the installation and your firewall does not block the application, the registration is conducted automatically.

As soon as your computer is not connected to the Internet during the installation or you do not have any licences available, a manual registration is required. The setup will show the following dialogue box.



Without any valid registration, the full version of the software will only be available to you for 30 days. You will have to submit a subsequent registration in this period. If you do not, the software will only be available as a DEMO version.

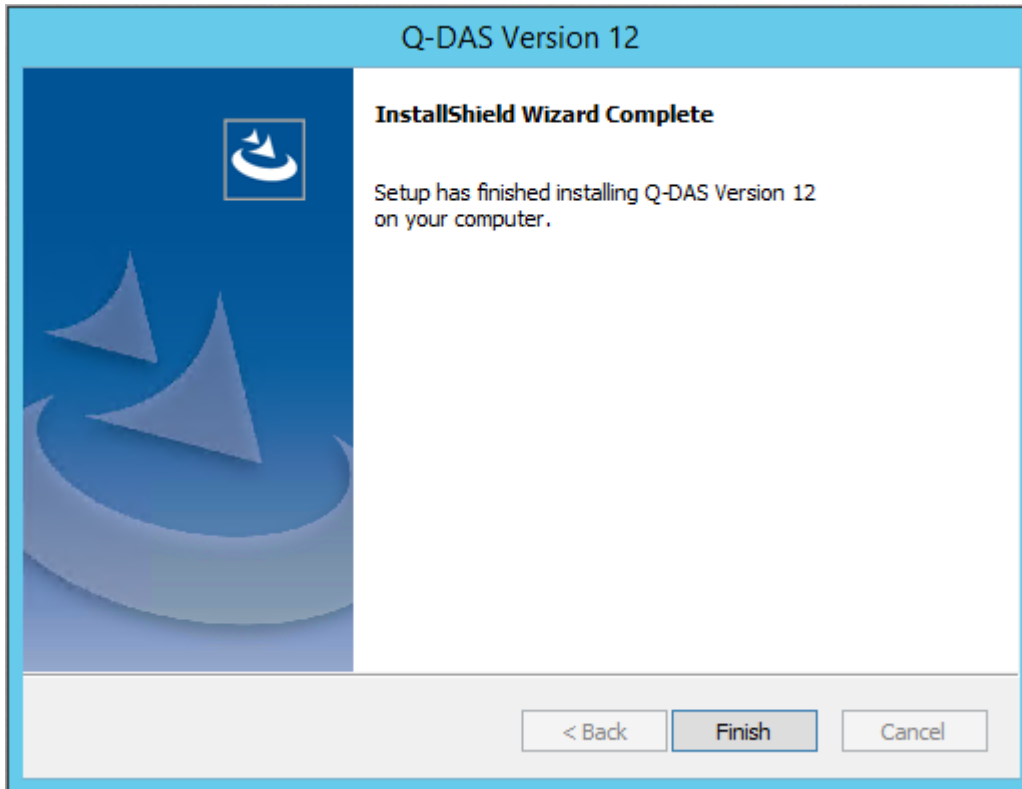
When you complete the registration subsequently, the licence manager imports the re-registration file (*.LIC). Further information about how to complete product registration are available at <https://www.qdas.de/en/service/support-hotline> in the installation manual, “Subsequent licence registration” chapter.



In case there are not any licences available, you will receive a re-registration file containing the following information: Registration failed. No more license. *product name=0.*

3.16 End of installation

After all installation have been completed, the wizard shows the following message.



Click "Finish" to close the installation.

3.17 Launcher

The server registers the 32-bit variant of the Q-DAS launcher. This fact gives you the opportunity to apply the default Access databases to the new installation and transfer them subsequently to SQL to roll out a 64-bit variant for the clients.

Windows > Start Menu > Programs > Q-DAS QM-TOOLS - V12			
Name	Änderungsdatum	Typ	Größe
V12- DB Update	01.02.2018 16:21	Verknüpfung	3 KB
V12- Licenses viewer	01.02.2018 16:21	Verknüpfung	3 KB
V12- Q-DAS Launcher	01.02.2018 16:21	Verknüpfung	2 KB
V12- Q-DAS License	01.02.2018 16:21	Verknüpfung	3 KB
V12- Terminal	01.02.2018 16:21	Verknüpfung	3 KB

4 ACCESS AUTHORISATION

You have to grant the rights to access the respective Share folders to allow for subsequent client installations and the access to clients.

For further information, read the “System requirements” document or contact a responsible person of the Q-DAS project team.