

# INSTALLATION CONCURRENT LOCAL

87298374 0987298374982739  
8470 2 **Q-DBM** 7 1545 82138 12  
7198723987 987239 98729872  
**PROCELLA** 234 154 13 544 565  
9872 2719827 7 27198723987  
45 8912 687723 **VIDARA** 27198  
21245 666 1214432 329 **Q-QIS**  
928 234 345 344 4718723987  
0187309 445 455 4877298374  
**M-QIS DASHBOARD** 772728498  
81 4981 **DESTRA** 918 2589 23  
59 **QS-STAT** 49814981 45598  
**M-QIS ENGINE** 49983 259 1547  
7487 29837409872 98374982  
73984702 **SOLARA.MP** 987349  
9283 120 38 485 0 2 38 49081



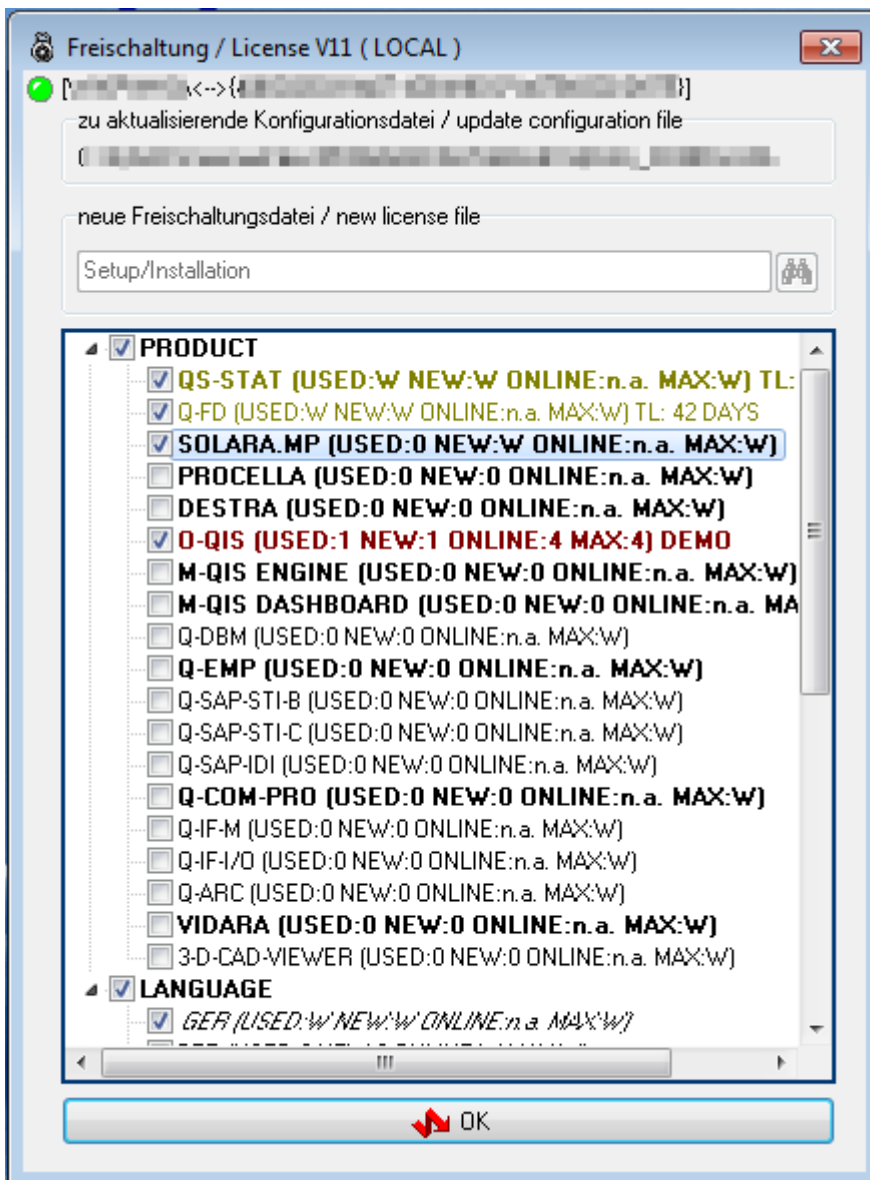
# CONTENTS

- 1 Preface – difference between products and options ..... 3**
- 2 Architecture ..... 4**
  - 2.1 How program files are arranged ..... 4
    - 2.1.1 INI ..... 5
    - 2.1.2 BIN32 / BIN64 ..... 5
    - 2.1.3 Plant..... 6
  - 2.2 How program files are arranged ..... 6
- 3 Local installation of version 12 ..... 7**
  - 3.1 Start the installation ..... 7
  - 3.2 Licence agreement ..... 8
  - 3.3 Select licence ..... 8
  - 3.4 Setup type ..... 9
  - 3.5 Select architecture..... 10
  - 3.6 Already installed Q-DAS versions..... 11
  - 3.7 Target directory ..... 12
    - 3.7.1 Change target directory..... 13
  - 3.8 Setup type ..... 13
    - 3.8.1 Complete ..... 14
    - 3.8.2 Custom ..... 14
      - 3.8.2.1 Activate additional data fields..... 15
      - 3.8.2.2 Support email address ..... 16
      - 3.8.2.3 Program launch..... 16
  - 3.9 Redistributables..... 17
  - 3.10 SQL server native client ..... 17
  - 3.11 Start the installation ..... 18
  - 3.12 Select the products to be installed..... 18
  - 3.13 Online registration ..... 19
  - 3.14 End of installation ..... 20

# 1 PREFACE – DIFFERENCE BETWEEN PRODUCTS AND OPTIONS

There are different types of installations for options and products. You have to apply the setup for initial installation/server provisioning. You may use the licence manager to add products and options.

The window below shows that products are displayed in bold letters to distinguish them from options. Licensed products and options are displayed in black, time-limited test licences in yellow and expired ones in red.



## 2 ARCHITECTURE

Compared to previous versions, Q-DAS software installations have a basically new architecture.

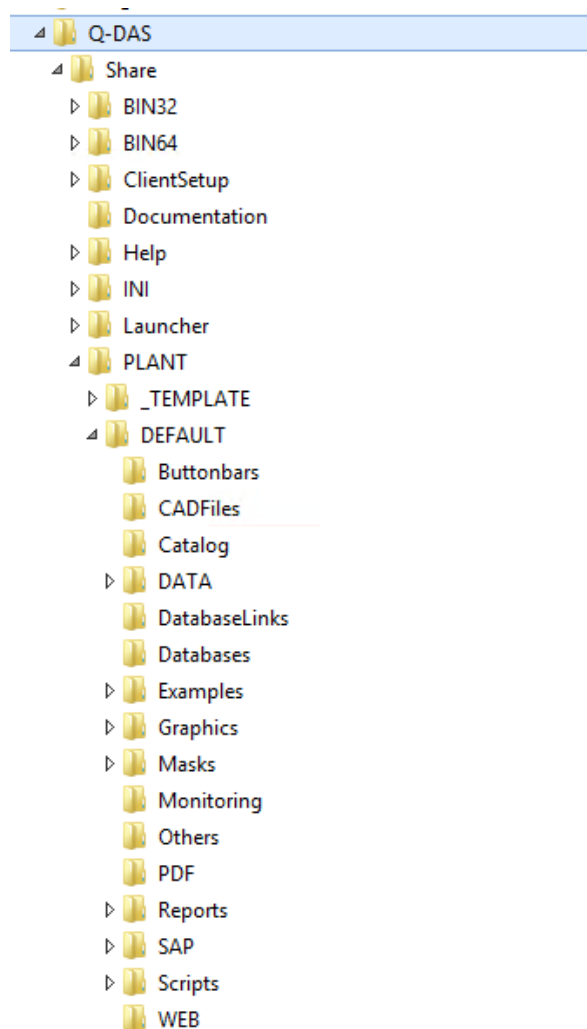
### 2.1 How program files are arranged

The Q-DAS folder has a subfolder referring to the respective installation variant.

"Share" for server provisioning

"Local" for local installation

"Client" for client installation

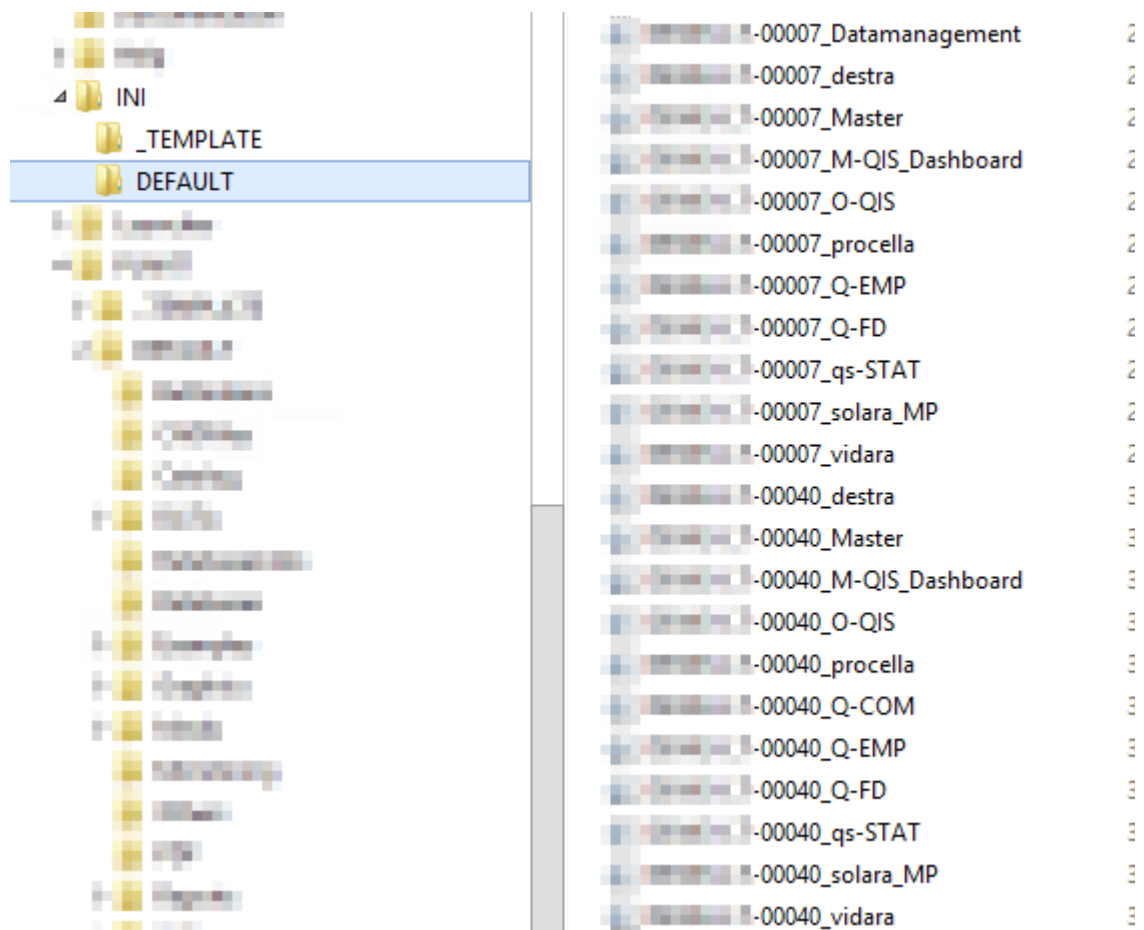


This arrangement is strictly based on binary data that are always provided as 32-bit and 64-bit variants for servers; however, when a local or client installation is concerned, you have to define the respective variant during the installation.

### 2.1.1 INI

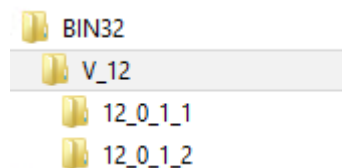
The INI directory contains all INI files for the start of products. This applies to local installations and to server-client installations.

In case of server-client installations, an associated subfolder allocated to the Windows computer name contains the INI files of a specific plant.



### 2.1.2 BIN32 / BIN64

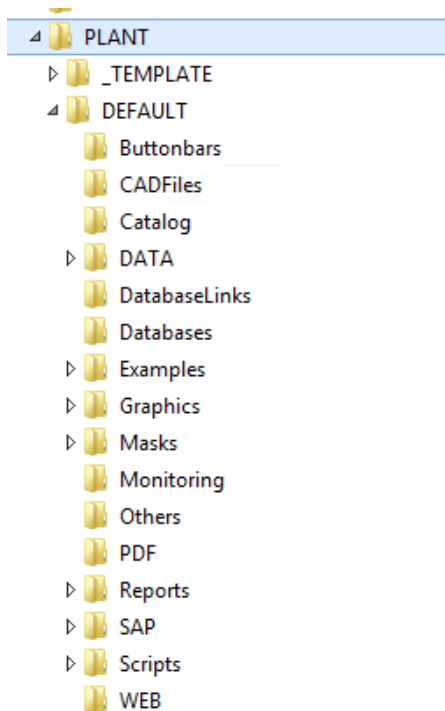
The BIN32/BIN64 folder has a subfolder containing the respective software version per minor release or test version.



### 2.1.3 Plant

The PLANT folder includes any files that can be edited by customer. The available structure cope with the parallel operation of several plants. This type of structure is recommended in a WTS or Citrix environment and shall be defined in a fee-based workshop with the Q-DAS project team. For reasons of performance, we do not recommend you access the network of a different location based on a server-client solution.

To define the structure, contact a responsible person of the Q-DAS project team or send an email to [info.qdas.mi@hexagon.com](mailto:info.qdas.mi@hexagon.com).



The “\_Template“ folder only serves as a master and is not part of a normal server-client installation.

## 2.2 How program files are arranged

We recommend you install the program files under C:\Program Files / Program Files (x86) in case of local or client installations. The respective files are separated in this folder. Binary files are saved to C:\Program Files / Program Files (x86) and any other folders to C:\ProgramData.

## 3 LOCAL INSTALLATION OF VERSION 12

### 3.1 Start the installation

Insert the DVD into your DVD drive. The welcome screen opens automatically.

If it does not open automatically, take the following steps.

- Open the Windows Explorer and select the respective drive. Double click the SETUP\_V12.exe to start it
- or
- click Start|Execute.
- Enter the letter of the DVD drive in the “Open” input field and add the file name SETUP\_V12.exe.

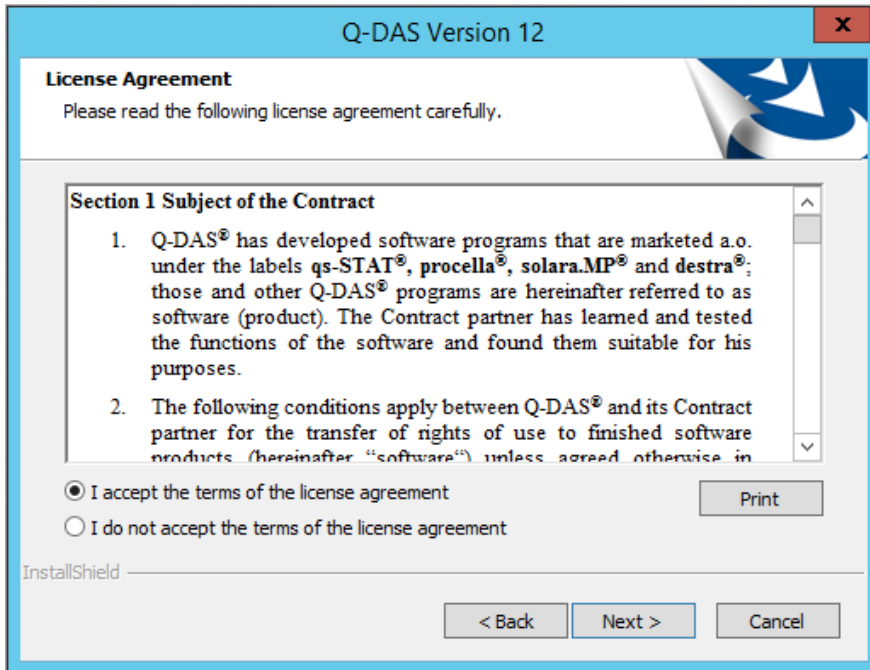
Example: *F:\SETUP\_V12.exe*



Click “Next >” to start the installation of version 12.

## 3.2 Licence agreement

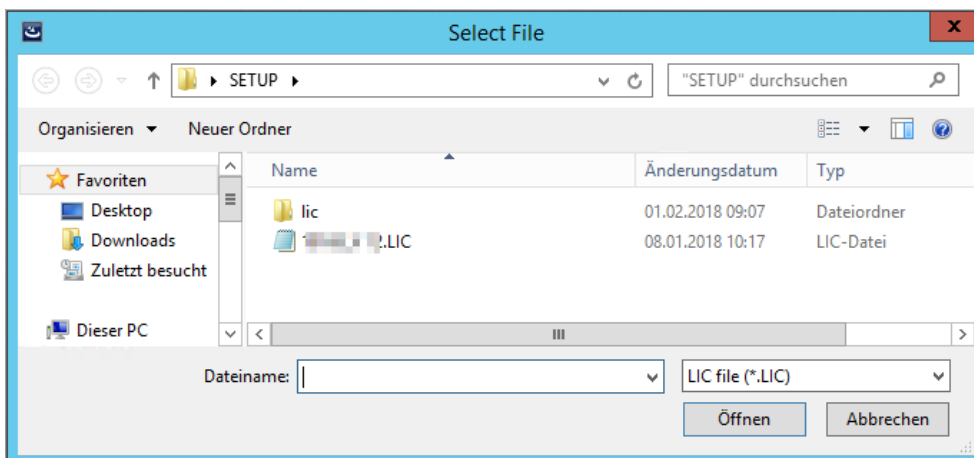
If you accept the licence agreement, select "I accept the terms of the license agreement" to enable the "Next >" button.



Click "Next >" to continue the installation.

## 3.3 Select licence

Select your licence file (\*.LIC) that is available on the DVD (or in the email) you received by default.



After you selected the respective \*.LIC file, click on "Open".



## 3.4 Setup type

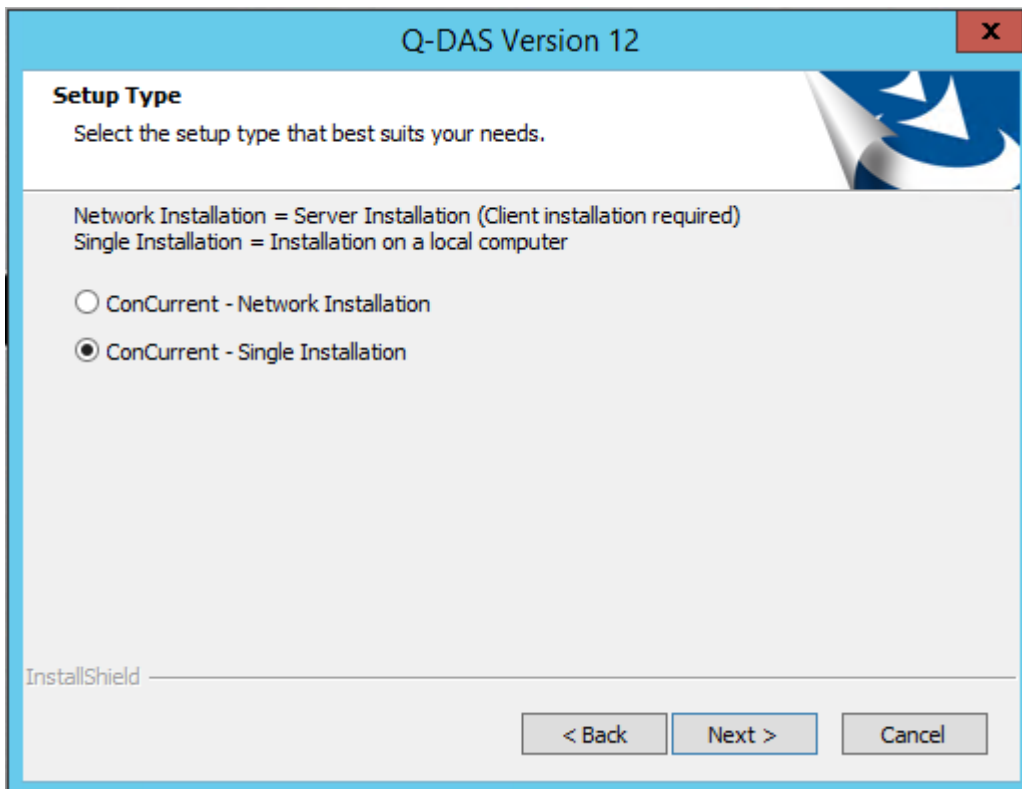
Select the setup type.

ConCurrent – Network Installation

= installation / provisioning on the server and subsequent client installations on any number of computers but with the number of simultaneous user registrations restricted to the number of licences.

ConCurrent – Single Installation (local single installation is described in a separate document)

= single installation



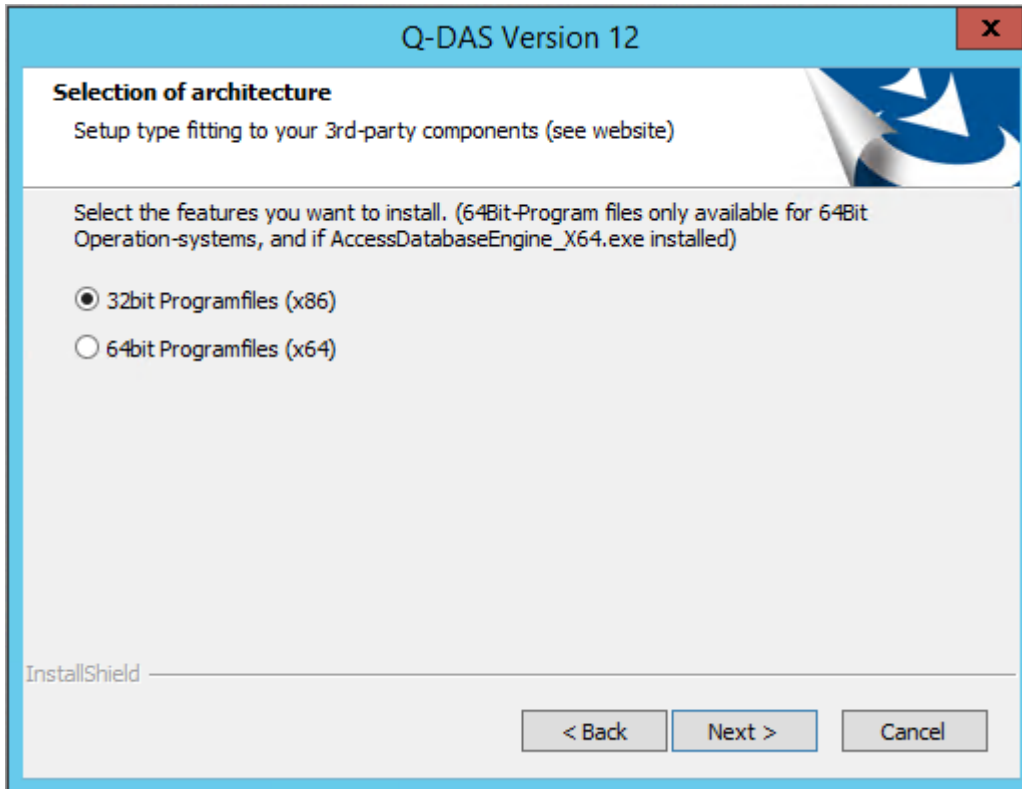
Please consider that you can only apply **one of these two setup types** on a computer. This is the time to choose the final setup type for the computer/server!

It is not possible to install different setup types on a computer (e.g. one product as a concurrent single installation and an additional product as a concurrent network installation)!

Select a setup type and click “Next >”.

## 3.5 Select architecture

Since version 12, we also provide a 64-bit variant.



The 64-bit variant is only available for local installations

- when the local computer applies a 64-bit operating system.
- when the AccessDatabaseEngine\_X64.exe system component is installed. You need this component to access Access databases with a 64-bit variant.



Visit the Microsoft homepage to learn about the installation of this system component.



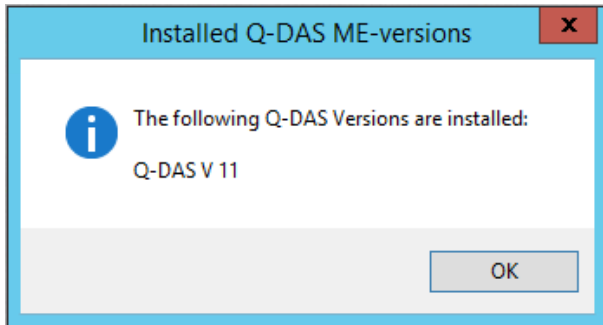
When you apply 64-bit Q-DAS applications, we do not recommend you use Access databases. Using the Microsoft 64-bit Access driver shall remain an exception. We recommend you move all databases to SQL or Oracle when you use the 64-bit version of Q-DAS applications.



Please consider that there are providers who do not offer 64-bit third-party DLLs for serial data recording yet. In January 2018, Heidenhain and Ibrit DLLs were only available as 32-bit variants. Please contact the Q-DAS hotline to find out which 64-bit variants are already available.

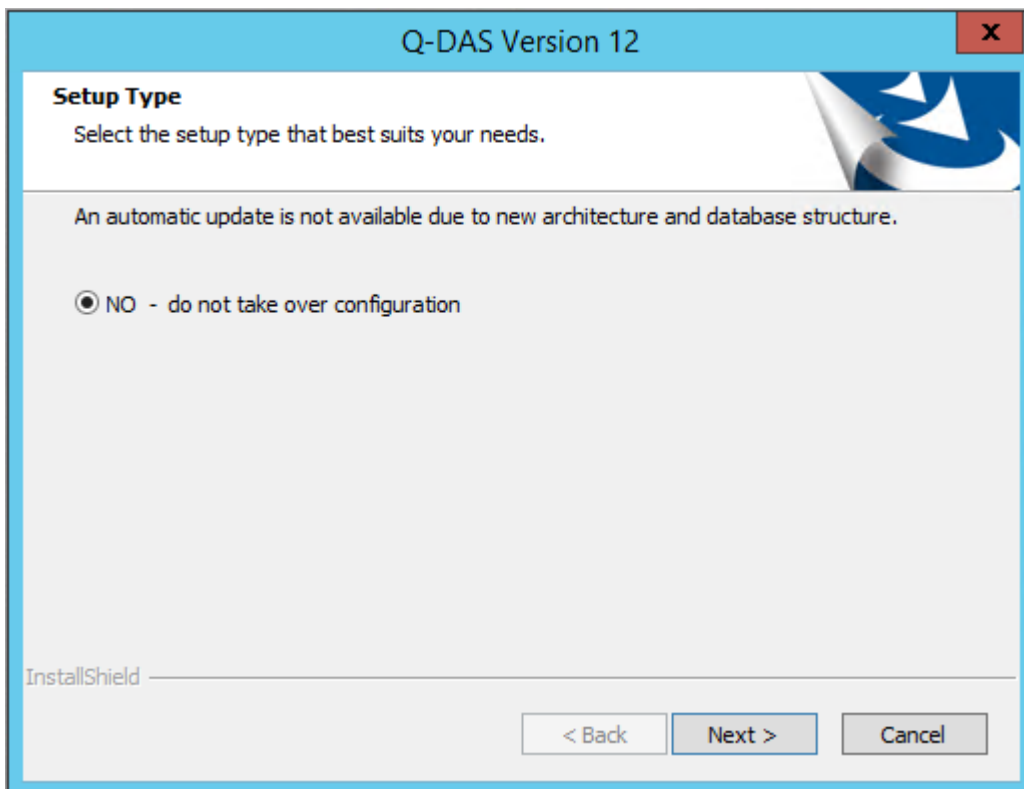
### 3.6 Already installed Q-DAS versions

In case you already installed some Q-DAS versions on your computer, the system informs you about any version installed.



Click "OK" to continue the installation.

Since the system architecture and database structures changed considerably, the system no longer offers the option to transfer configurations (databases, input masks, reports, etc.) of previous versions automatically. There is, however, a separate document available explaining how to upgrade version 11 to version 12.



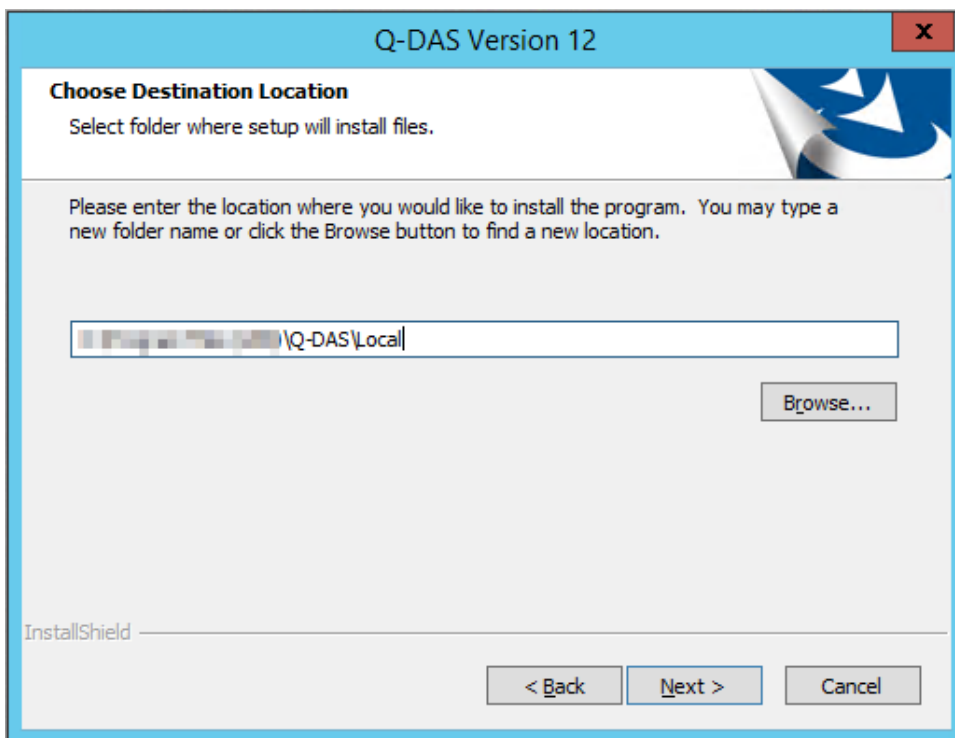
Click "Next >" to start the installation of version 12.

### 3.7 Target directory

Select the target directory for the installation of Q-DAS version 12.

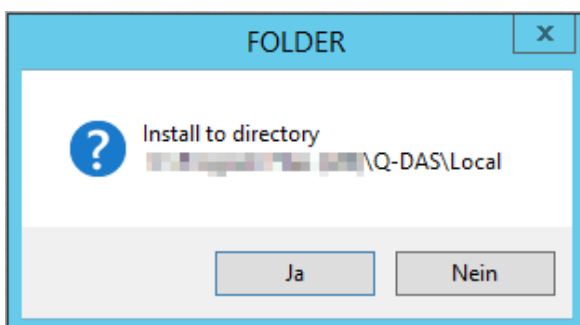
The default directories for the 32-bit variant and 64-bit variant differ:

- 32-bit: Program Files (x86)
- 64-bit: Program Files



If you want to apply the specified target directory, click “Next >”.

A confirmation prompt opens.



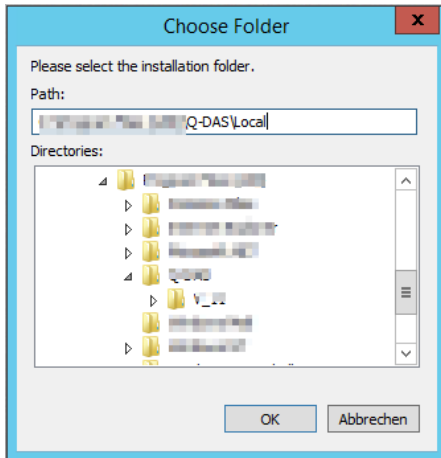
If you want to change the target directory, click “No”.

Confirm the selected target directory by clicking on “Yes” and continue the installation.

### 3.7.1 Change target directory

Change the target directory by entering the path directly in the input field or by clicking the “Browse” button. We recommend you keep the default settings, i.e. the path the system provides by default.

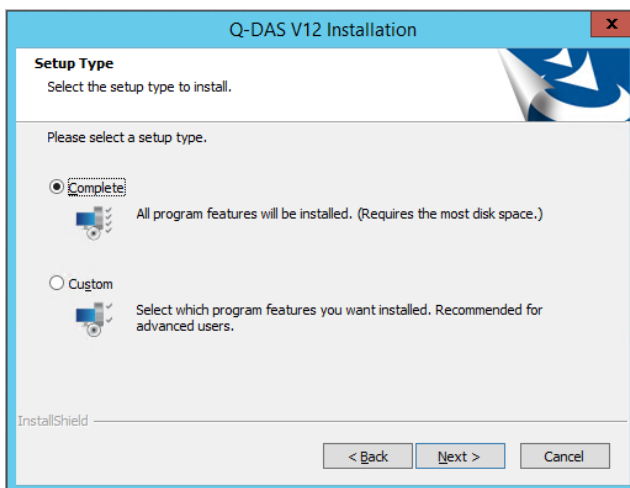
Enter the new path directly or select the respective directory.



Click the “OK” button.

## 3.8 Setup type

There are two setup types available for single installations.



- *Complete* refers to a standard installation. This type of setup installs all \*.INI files on the server and creates a link on the respective client computer (see next chapter).
- Use *Custom* to select single components you want to install and which components you want to install locally (see next chapter).

Select the respective setup and click “Next >”.

### 3.8.1 Complete

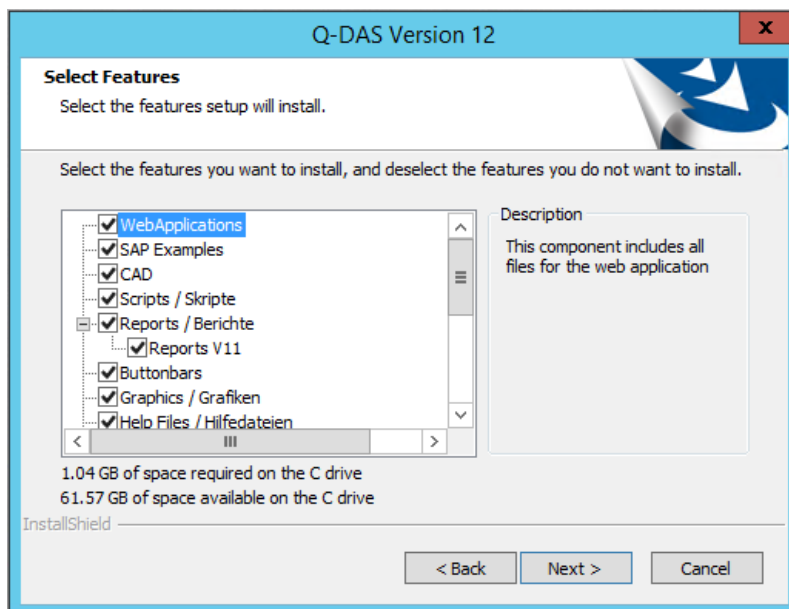
A complete installation applies the following settings by default. If you want to change any of them, please switch to the customised installation (“Custom”).

- The following additional data fields are enabled by default:
  - K0006 = batch number / ident number
  - K0007 = cavity number / spindle number
  - K0009 = text
  - K0011 = process parameter
  - K0014 = part ID number
  - K0015 = reason for test
  - K0016 = production number
  - K0017 = work piece fixture number
  - K0053 = order number
- The email address specified for hotline requests is [hotline.qdas.mi@hexagon.com](mailto:hotline.qdas.mi@hexagon.com).
- Registry entries are set to “Allow multiple start” and “Block products”. Read how to use these option in the [Program launch](#) chapter.

### 3.8.2 Custom

This dialogue box only opens when you selected the “Custom” setup type for your single installations.

Select the single components you want to install.



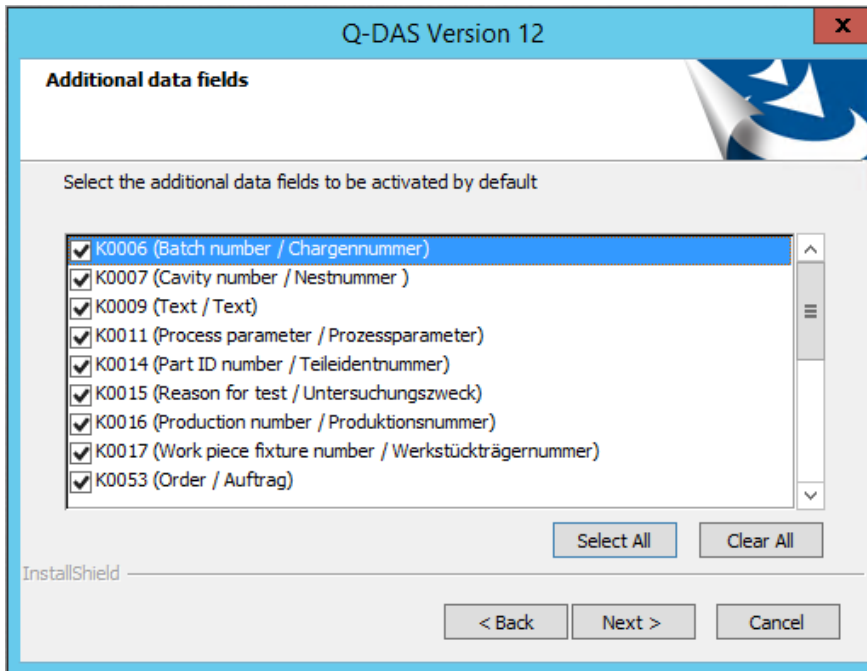
We recommend you keep the default settings (all components enabled).

Select the respective components and click “Next >”.

### 3.8.2.1 Activate additional data fields

This dialogue box only opens when you selected the “Custom” setup type for your single installations.

Activate the additional data fields to be available in the software. The initialising file defines any disabled additional data fields as “deactivated”.



The following additional data fields are enabled by default:

- K0006 = batch number / ident number
- K0007 = cavity number / spindle number
- K0009 = text
- K0011 = process parameter
- K0014 = part ID number
- K0015 = reason for test
- K0016 = production number
- K0017 = work piece fixture number
- K0053 = order number



By activating these fields, they will be available in the software. However, you might still have to create them in the databases. The “K00xx cannot be written“ document at <https://www.q-das.de/en/service/support-hotline/> (error messages) explains how to create additional data fields in the databases.

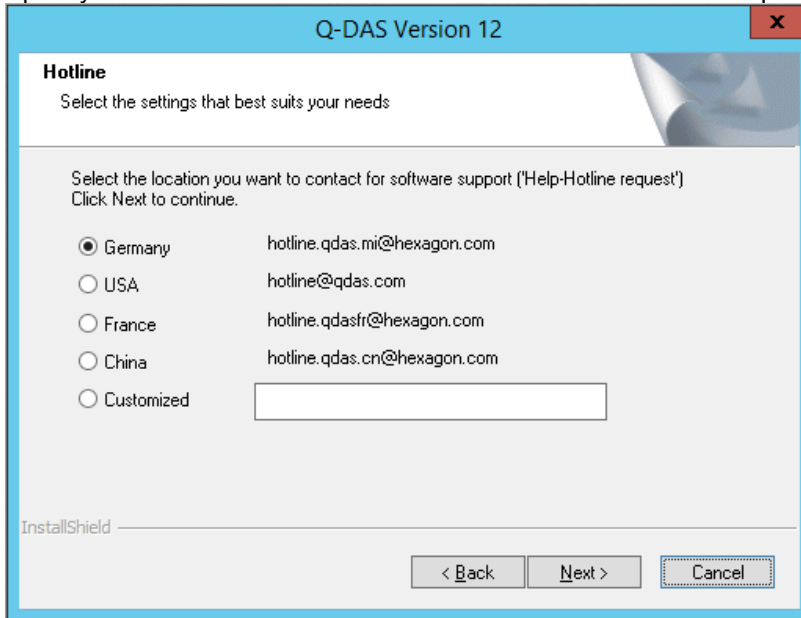
For reasons of performance and database size, we recommend you activate only the additional data fields you need.

Click “Select All” to activate all additional data fields. By clicking “Clear ALL”, you deactivate all additional data fields. Activate all the additional data fields you need and click “Next >”.

### 3.8.2.2 Support email address

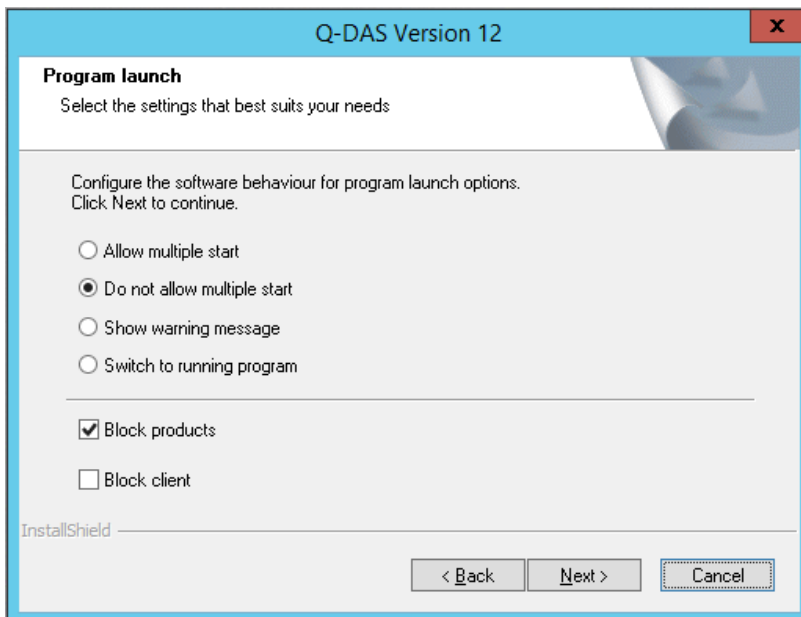
This dialogue box only opens when you selected the “Custom” setup type for your single installations.

Specify the location and associated email address for hotline requests.



### 3.8.2.3 Program launch

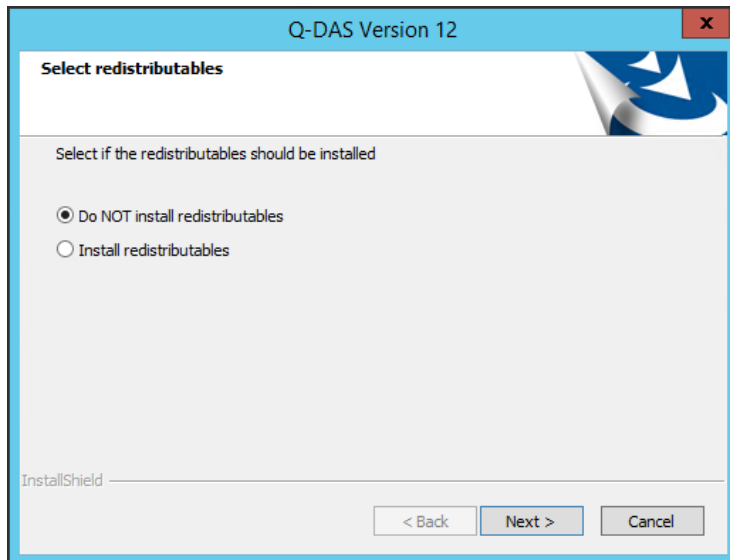
Select whether you want to accept multiple product starts. “Do not allow multiple start” and the additional option “Block products” are enabled by default. In this case, you can start each product on a computer only once in the registry but you may still run different products (e.g. qs-STAT and solara.MP) simultaneously. Activate the “Allow multiple start” to start the same product several times but consider that even the same product blocks will block several licences in this case.





## 3.9 Redistributables

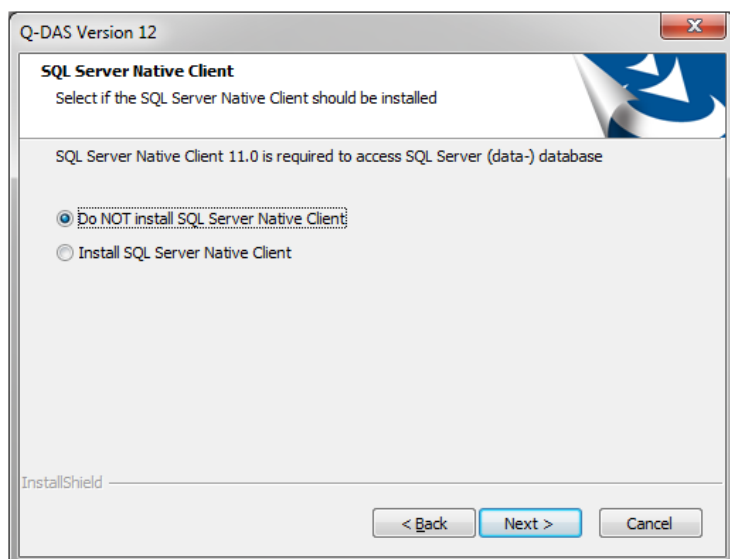
When you want to apply the Q-DAS 3D CAD Viewer, you have to install the Microsoft Visual Studio Redistributable component. Select whether you want to install it automatically.



Activate the respective option and click “<Next>”.

## 3.10 SQL server native client

Applying SQL databases, you need the SQL server native client to access data. Since version 12.0.2.1, this client is included in the Q-DAS installation by default. In case you do not have the SQL server native client available yet on your computer, you may install this component automatically.

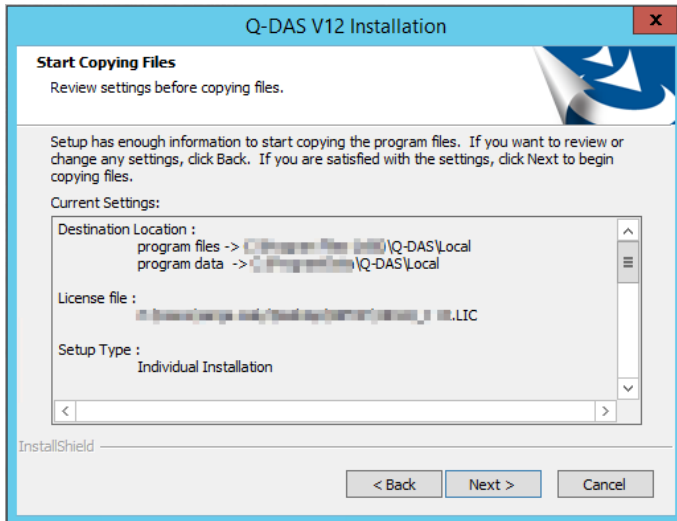


Select the respective option and click ”Next >”.

## 3.11 Start the installation

A preview shows the settings you adjusted.

To change the settings, click on “< Back” to repeat one of the previous steps.



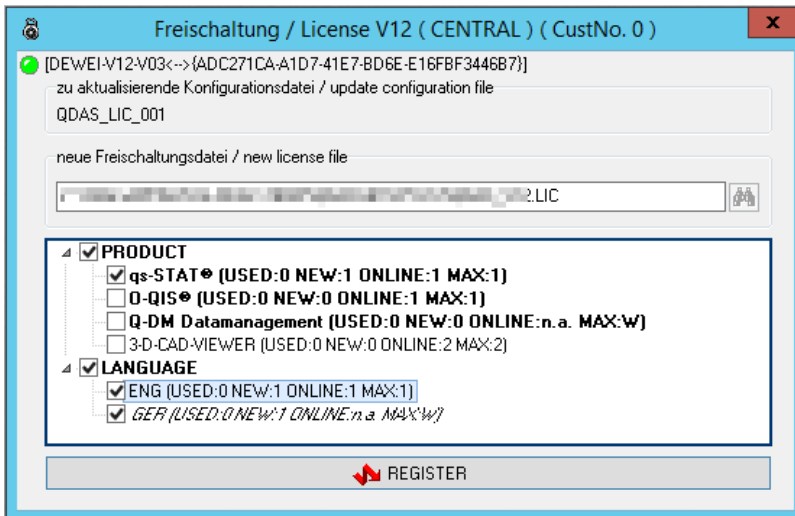
Start the installation by clicking “Next >”.

## 3.12 Select the products to be installed

A local installation uses a separate licence for each product and each licence.

Please consider that you cannot change the number of licences for the default language (German “GER” in this case). The system generates this number automatically. You may activate any additional language (if available).

All products, options and languages are disabled by default. Check the boxes of the products/options/languages you want to install and confirm your choice by clicking “OK”.



In this example, we selected Q-DAS software products qs-STAT and the English language licence in addition to the default language German.

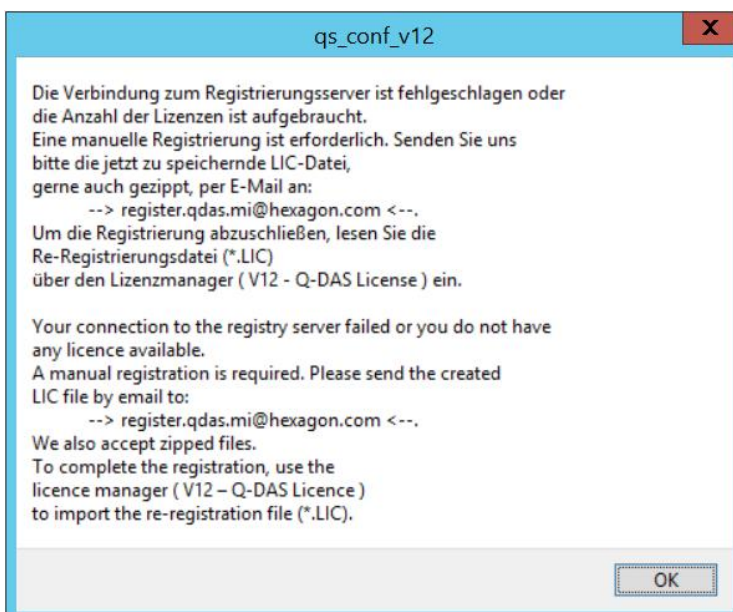
M-QIS Engine is not available for local installations.

### 3.13 Online registration

The online registration starts after the product installation.

When your computer is connected to the Internet during the installation and your firewall does not block the application, the registration is conducted automatically.

As soon as your computer is not connected to the Internet during the installation or you do not have any licences available, a manual registration is required. The setup will show the following dialogue box.





Without any valid registration, the full version of the software will only be available to you for 30 days. You will have to submit a subsequent registration in this period. If you do not, the software will only be available as a DEMO version.

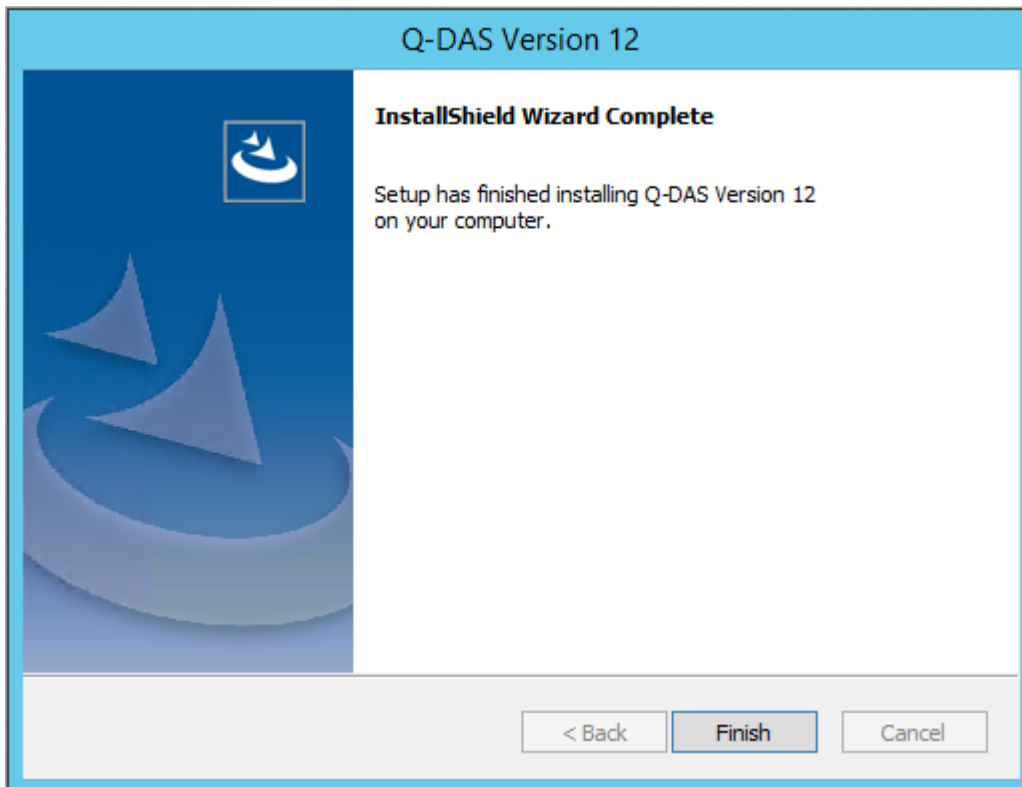
When you complete the registration subsequently, the licence manager imports the re-registration file (\*.LIC). Further information about how to complete product registration are available at <https://www.q-das.de/en/service/support-hotline/> in the installation manual, "Subsequent licence registration" chapter.



In case there are not any licences available, you will receive a re-registration file containing the following information: Registration failed. No more license. *product name=0*.

## 3.14 End of installation

After all installations have been completed, the wizard shows the following message.



Click "Finish" to close the installation.