

# INSTALLATION CONCURRENT NETWORK CLIENT

87298374 0987298374982739  
8470 2 **Q-DBM** 7 1545 82138 12  
7198723987 987239 98729872  
**PROCELLA** 234 154 13 544 565  
9872 2719827 7 27198723987  
45 8912 687723 **VIDARA** 27198  
21245 666 1214432 329 **Q-QIS**  
928 234 345 344 4718723987  
0187309 445 455 4877298374  
**M-QIS DASHBOARD** 772728498  
81 4981 **DESTRA** 918 2589 23  
59 **QS-STAT** 49814981 45598  
**M-QIS ENGINE** 49983 259 1547  
7487 29837409872 98374982  
73984702 **SOLARA.MP** 987349  
9283 120 38 485 0 2 38 49081



# CONTENTS

- 1 Preface ..... 3**
- 1.1 Start the installation – open the setup .....5
- 1.2 Licence agreement.....6
- 1.3 Select the architecture.....7
- 1.4 Select version.....8
- 1.5 Select plant .....9
- 1.6 Target directory ..... 10
  - 1.6.1 Change target directory..... 11
- 1.7 Type of installation -setup type ..... 12
  - 1.7.1 "Complete" setup type..... 12
  - 1.7.2 "Custom" setup type..... 13
    - 1.7.2.1 Product selection..... 13
    - 1.7.2.2 Local components ..... 14
    - 1.7.2.3 Program launch..... 14
- 1.8 Redistributables..... 15
- 1.9 SQL server native client ..... 16
- 1.10 Start the installation ..... 17
- 1.11 Create the product INI ..... 18
- 1.12 End of installation ..... 19
- 1.13 Launcher ..... 20

# 1 PREFACE

You may distribute clients after a successful server provisioning (described in a separate document).
















When you distribute the Q-DAS applications Q-DM Datamanagement or M-QIS Engine Reporting (Reporting System), we recommend you only apply local installations. A server-client installation is not available for Q-DM Datamanagement or M-QIS Engine Reporting.



Clients are not able to use local server paths. This is the reason why the first setup of a client creates entries with UNC paths. Make sure that the client has write access to the FireDAC.ini on the sever when you install a client for the first time. The installation is cancelled in case there is not write access or the UNC paths are missing.



NOTE: After distributing clients, the system creates an individual INI file for each product of each client on the server. This INI file includes various (default) paths e.g. for DFQ files, databases, graphics, CAD files, etc. The template for the clients' INI files is available in the "\_ClientTemplate" directory on the server. The effort required to change all paths of all \*.INI files subsequently is considerable and should be considered carefully.

Q-DAS ▶ Share ▶ INI ▶ DEFAULT ▶ _ClientTemplate	
Name	Änderungsdatum
 Datamanagement.INI	01.02.2018 16:21
 destra.INI	01.02.2018 16:21
 MASTER.INI	01.02.2018 16:21
 M-QIS_Dashboard.INI	01.02.2018 16:21
 M-QIS_Engine.INI	01.02.2018 16:21
 O-QIS.INI	01.02.2018 16:21
 procella.INI	01.02.2018 16:21
 Q-COM.INI	01.02.2018 16:40
 Q-EMP.INI	01.02.2018 16:21
 Q-FD.INI	01.02.2018 16:21
 qs_STAT.INI	01.02.2018 16:21
 solara_MP.INI	01.02.2018 16:21
 vidara.INI	01.02.2018 16:21

Template for client distribution

This extract only gives a brief overview to illustrate the issue. Most paths in the INI files are module-specific. The following example only considers the Sample Analysis (AS) but you need these considerations for all paths and modules.

**Default paths for File|Open dialog**

**read\_as=C:\Q-DAS\Share\PLANT\DEFAULT\DATA\OwnData**

**Default paths for File|Save dialog**

**write\_as=C:\Q-DAS\Share\PLANT\DEFAULT\DATA\OwnData**

**Default paths for picture files**

**BMP\_AS=C:\Q-DAS\Share\PLANT\DEFAULT\GRAPHICS**

**Default paths for CAD files**

**CAD\_AS=C:\Q-DAS\Share\PLANT\DEFAULT\CADFiles**

**Default paths for report templates**

**REPORTS\_AS=C:\Q-DAS\Share\PLANT\DEFAULT\REPORTS**

**Default PDF output paths**

**PDF\_AS=C:\Q-DAS\Share\PLANT\DEFAULT\PDF**

**Default paths for button bars (for Designer)**

**Buttonbars\_AS=C:\Q-DAS\Share\PLANT\DEFAULT\ButtonBars**

**Button bars**

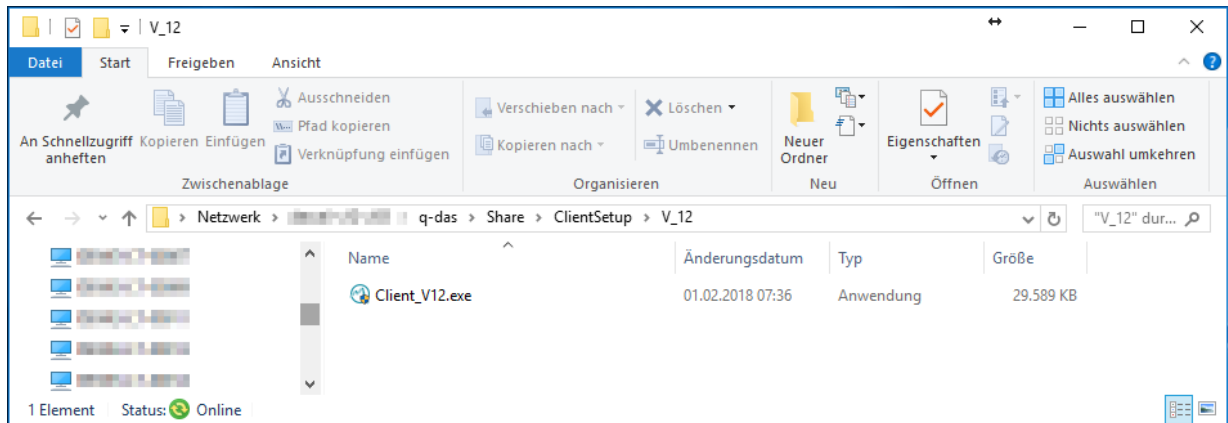
**ButtonPanelDefFile\_CM=C:\Q-DAS\Share\PLANT\DEFAULT\ButtonBars\CMM\_BUTTONS.DEF**

**(Input) Masks definition files**

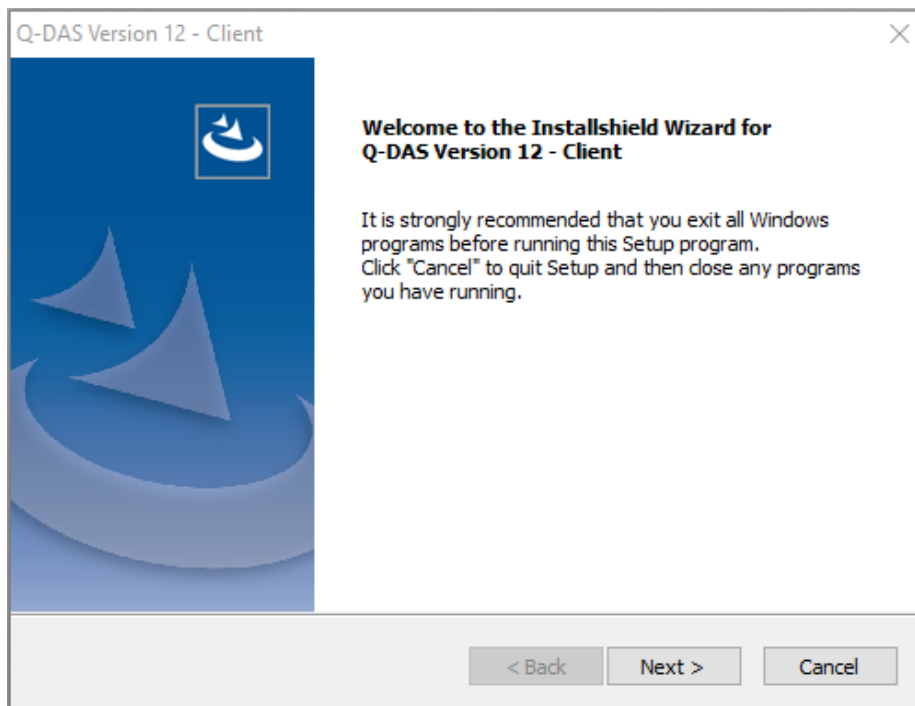
**MaskDefFile\_AS=C:\Q-DAS\Share\PLANT\DEFAULT\Masks\MASKE\_AS.DEF**

## 1.1 Start the installation – open the setup

The application starting the client setup is part of the provided server directories under ...\\Share\\ClientSetup\\V12



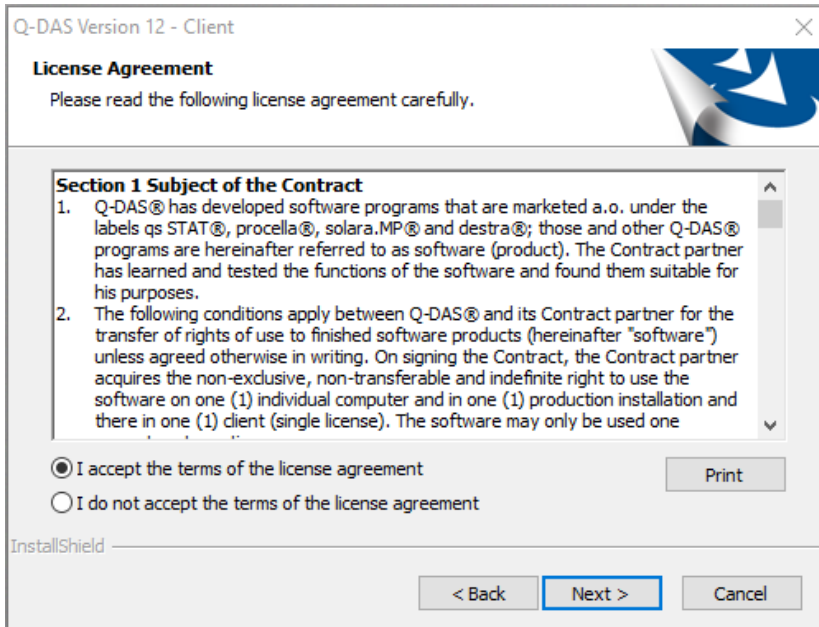
You may access this directory from your computer to activate the "Client\_V12.exe" file. This file starts the client installation.



The installation wizard checks whether you have Q-DAS products installed on your computer and welcomes you. Click "Next>" to start the installation.

## 1.2 Licence agreement

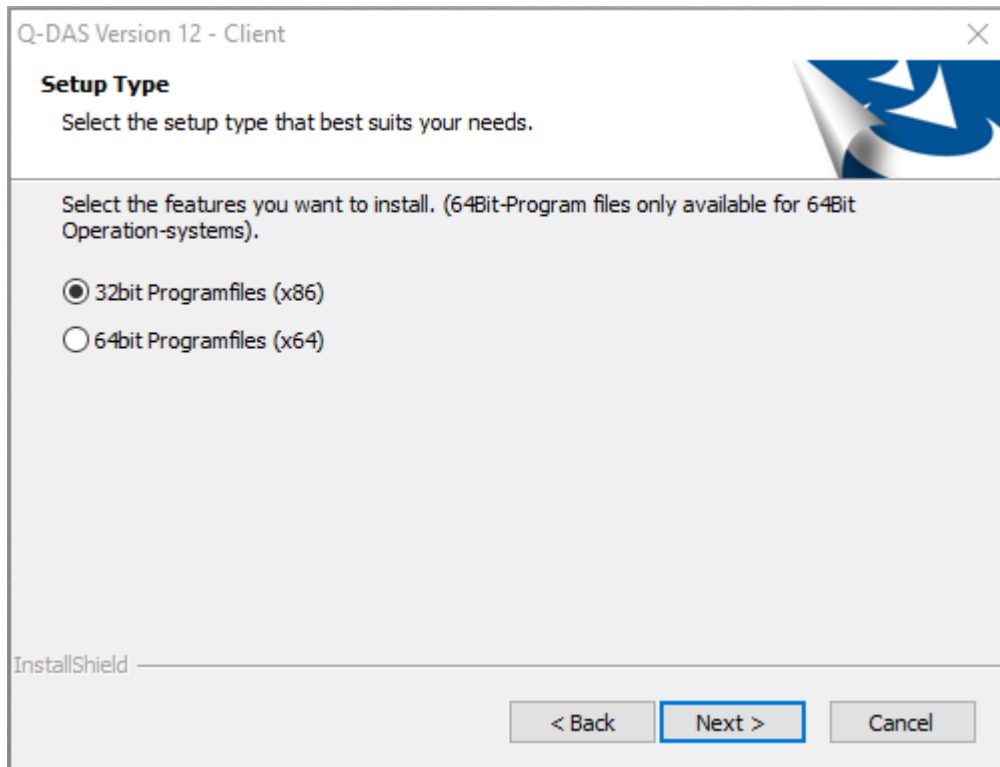
If you agree to these terms and conditions, select "I accept the terms of the license agreement" to enable the "Next >" button.



Click "Next >" to continue the client installation.

## 1.3 Select the architecture

Since version 12, we also provide a 64-bit program variant.



The 64-bit variant is only available for local installations

- when the local computer applies a 64-bit operating system.



The system does **NOT** check whether you still apply Access databases. Distributing 64-bit clients, your local IT department either has to ensure that all server databases (value/licence/configuration/text database) are SQL or Oracle databases or needs to install the Microsoft system component AccessDatabaseEngine\_X64.exe on all clients if you still want to apply Access databases.



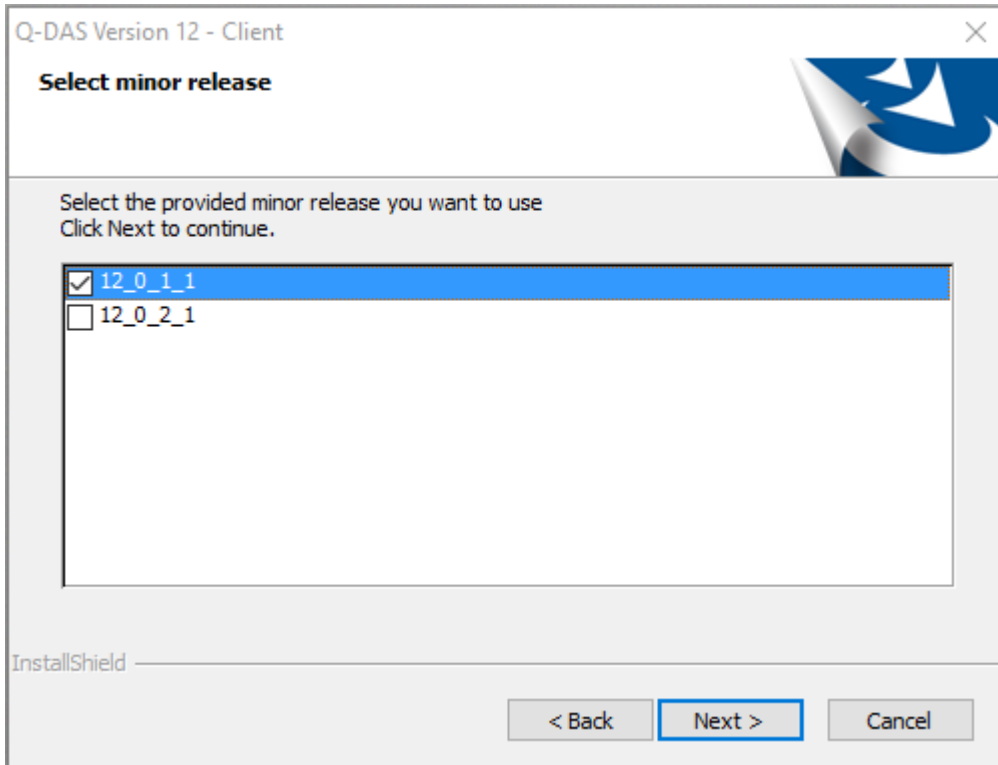
When you apply 64-bit Q-DAS applications, we do not recommend you use Access databases. Using the Microsoft 64-bit Access driver shall remain an exception. We recommend you move all databases to SQL or Oracle when you use the 64-bit version of Q-DAS applications.



Please consider that there are providers who do not offer 64-bit third-party DLLs for serial data recording yet. In January 2018, Heidenhain and Ibrit DLLs were only available as 32-bit variants. Please contact the Q-DAS hotline to find out which 64-bit variants are already available.

## 1.4 Select version

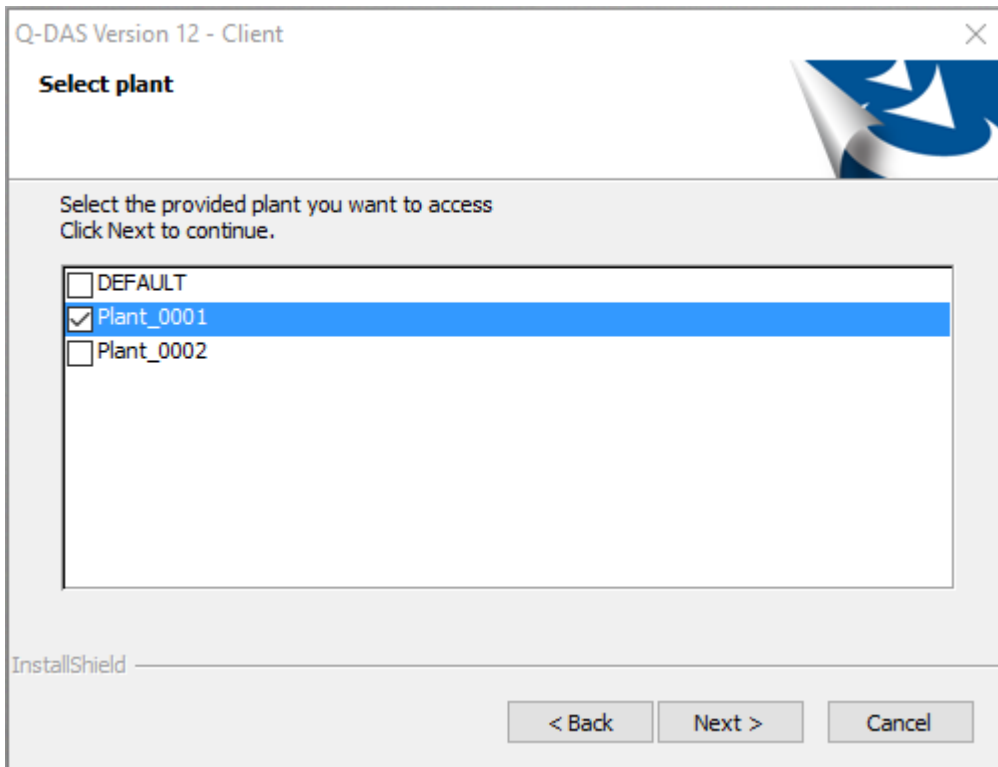
Since version 12, you may choose between the latest minor releases. Using a client setup, you may select the version you want to distribute and which is thus linked to the client.





## 1.5 Select plant

Version 12 gives you the opportunity to roll out several plants due to a central software architecture. In this case, you may select the respective plant in a client installation. It generally is "DEFAULT".



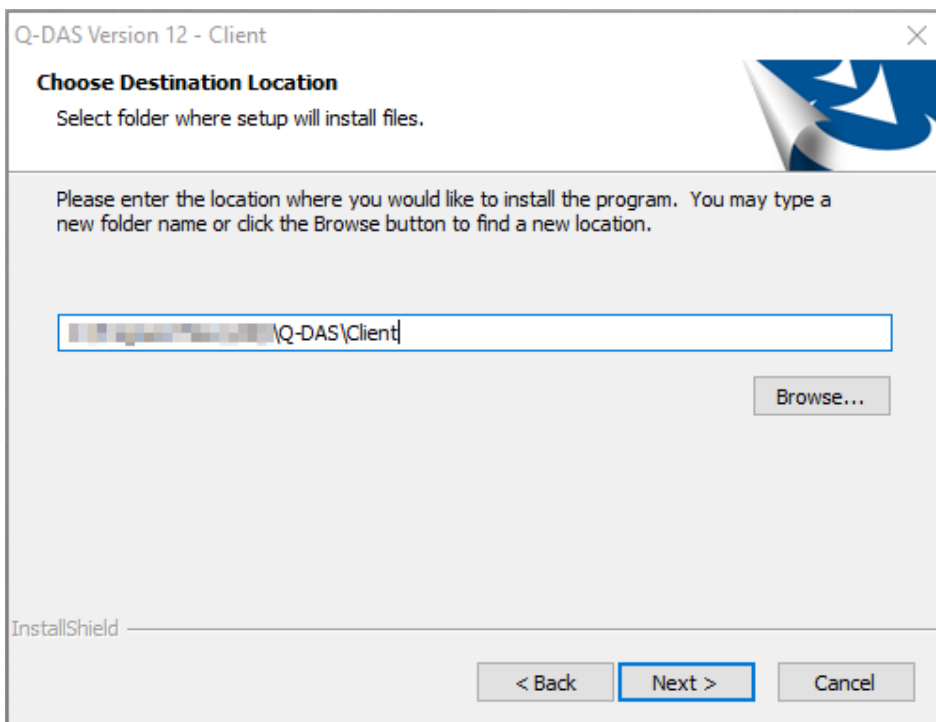
If you want to configure several plants on a central platform, please consider defining the structure in a fee-based workshop with the Q-DAS project team. For further information, contact a responsible person of the Q-DAS project team or send an email to [info.qdas.mi@hexagon.com](mailto:info.qdas.mi@hexagon.com).

## 1.6 Target directory

Select the target directory for the installation of Q-DAS version 12.

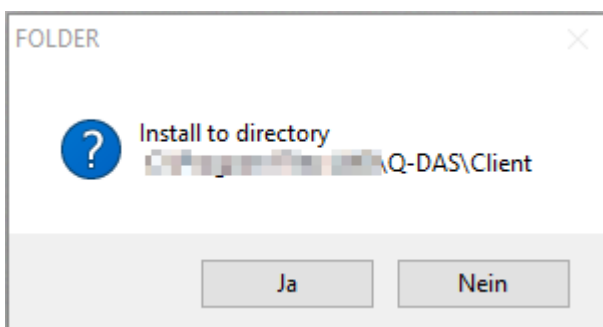
The default directories for the 32-bit and 64-bit versions are different.

- 32-bit operating system: C:\Program Files (x86)\Q-DAS\CLIENT\*\*
- 64-bit operating system: C:\Program Files\Q-DAS\CLIENT\*\*



If you want to apply the specified target directory, click "Next >".

A confirmation prompt opens.



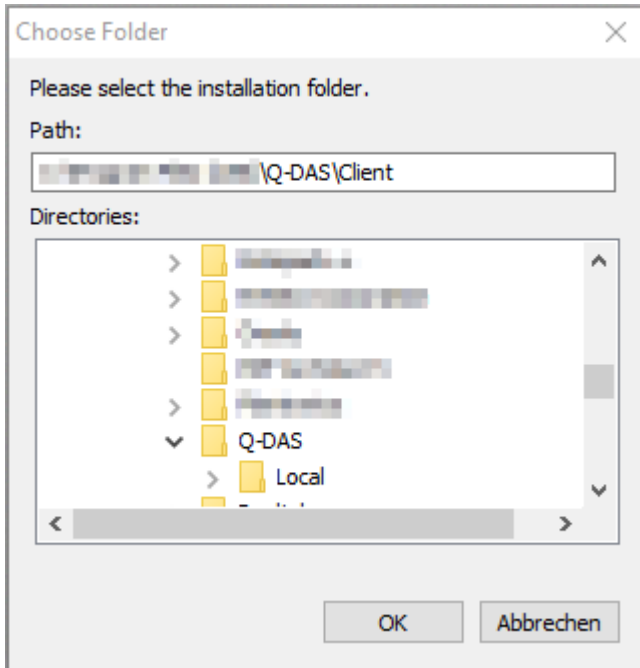
If you want to change the target directory, click "No".

Confirm the selected target directory by clicking on "Yes" and continue the installation.

### 1.6.1 Change target directory

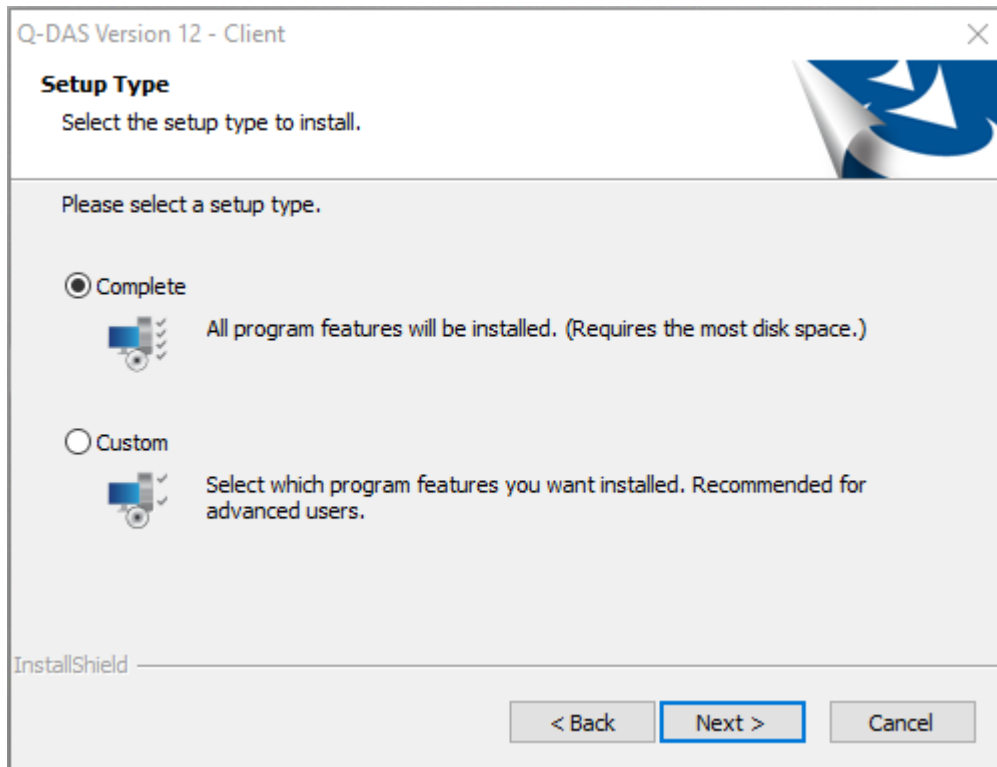
Change the target directory by entering the path directly in the input field or by clicking the “Browse” button. We recommend you keep the default settings, i.e. the path the system provides by default.

Enter the new path directly or select the respective directory.



## 1.7 Type of installation -setup type

There are two setup types available.



- *Complete* refers to a standard installation. This type of setup installs all \*.INI files on the server and creates a link on the respective client computer (see next chapter).
- Use *Custom* to select single components you want to install and which components you want to install locally (see next chapter).

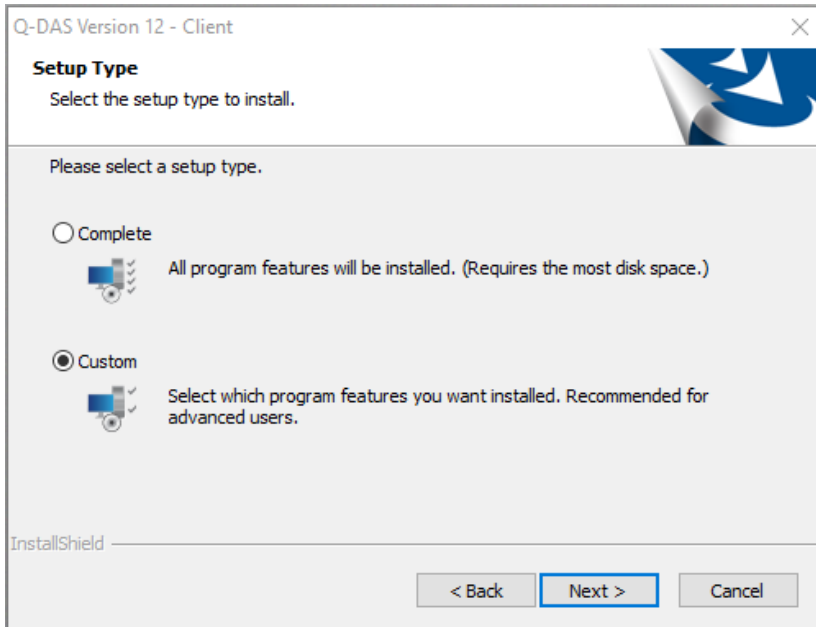
### 1.7.1 "Complete" setup type

A complete installation applies the following settings by default. If you want to change any of them, please switch to the customised installation ("Custom").

- Creates all %Windows\_PC\_Name%\_%Productname%.INI files
- Stores all \*.ICO files for the start icons on the client
- Does not store any programs on the client
- Provides all products registered during the server provisioning in the launcher
- Sets the registry entry for multiple product starts to "Allow multiple start" / "Block products"

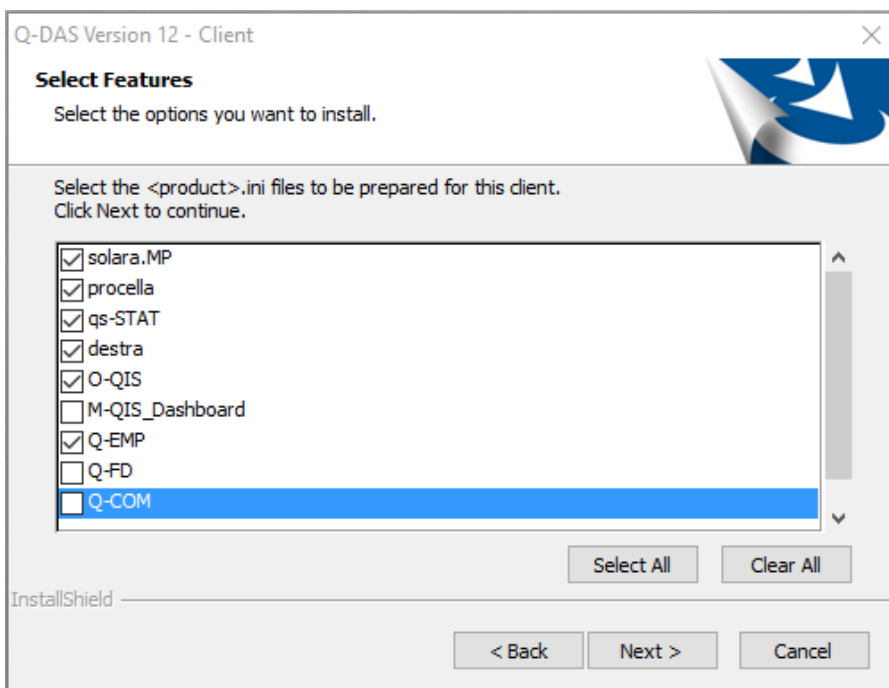
## 1.7.2 "Custom" setup type

Select "Custom" to specify the single components you want to install.



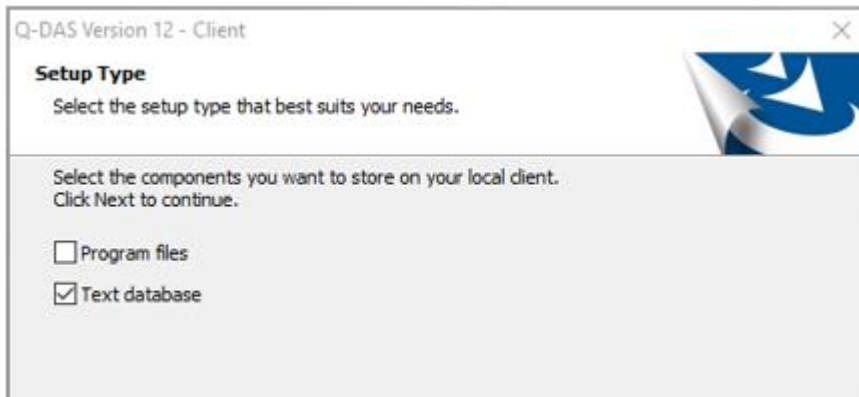
### 1.7.2.1 Product selection

Select the single products you want to prepare for the client. When you rolled out the software and provided several Q-DAS products on the server but there is only one product available for this client now (e.g. qs-STAT), you may select further products here to prepare the client for the application of additional Q-DAS products (e.g. solara.MP). This makes any subsequent activation and distribution of software products easier.



### 1.7.2.2 Local components

Select whether you want to store program files or the Access text database locally to improve the client's performance. Please consider defining respective access rights on the client for this type of installation. If there is an update available, you will have to update the files on each client separately.



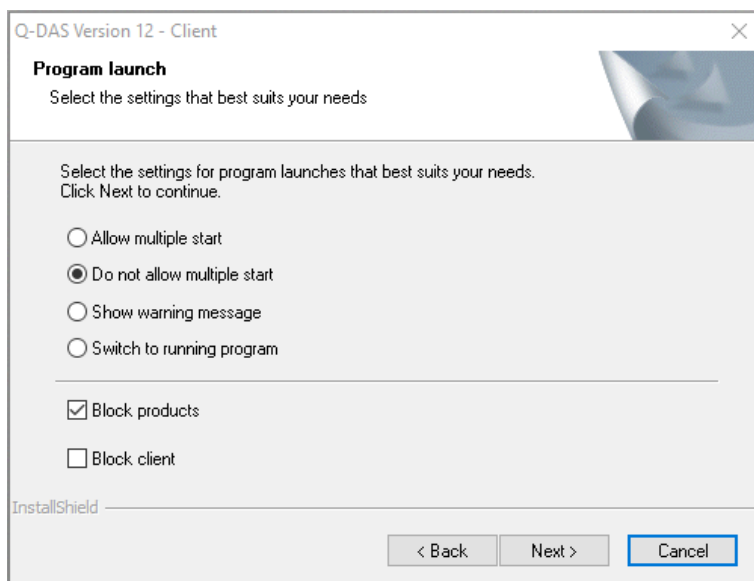
Storing the Access text database locally and using a 64-bit variant, you have to ensure that the AccessDatabaseEngine\_X64.exe Microsoft component is installed on the respective client. A 64-bit variant will not run without this file installed.



When you apply 64-bit Q-DAS applications, we do not recommend you use Access databases. Using the Microsoft 64-bit Access driver shall remain an exception. We recommend you move all databases to SQL or Oracle when you use the 64-bit version of Q-DAS applications.

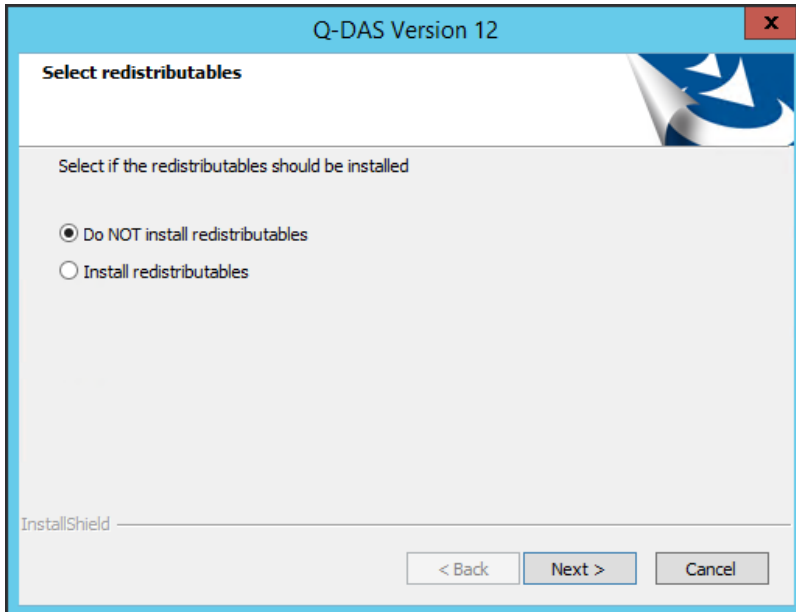
### 1.7.2.3 Program launch

Select whether you want to accept multiple product starts. "Do not allow multiple start" and the additional option "Block products" are enabled by default. In this case, you can start each product on a computer only once in the registry but you may still run different products (e.g. qs-STAT and solara.MP) simultaneously. Activate the "Allow multiple start" to start the same product several times but consider that even the same product blocks will block several licences in this case.



## 1.8 Redistributables

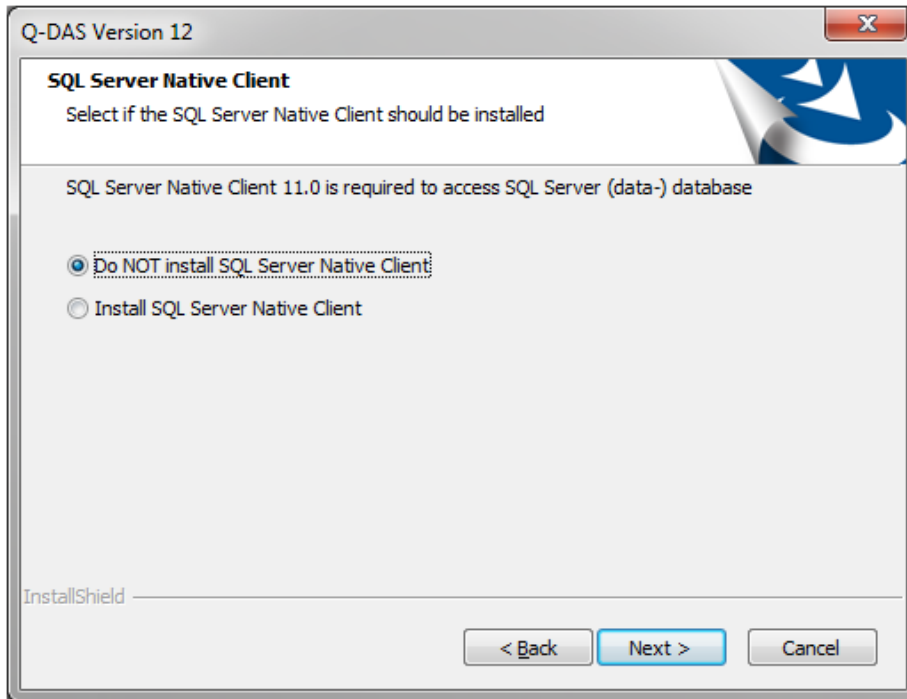
When you want to apply the Q-DAS 3D CAD Viewer, you have to install the Microsoft Visual Studio Redistributable component. Select whether you want to install it automatically.



Activate the respective radio button and click "Next >".

## 1.9 SQL server native client

Applying SQL databases, you need the SQL server native client to access data. Since version 12.0.2.1, this client is included in the Q-DAS installation by default. In case you do not have the SQL server native client available yet on your computer, you may install this component automatically.



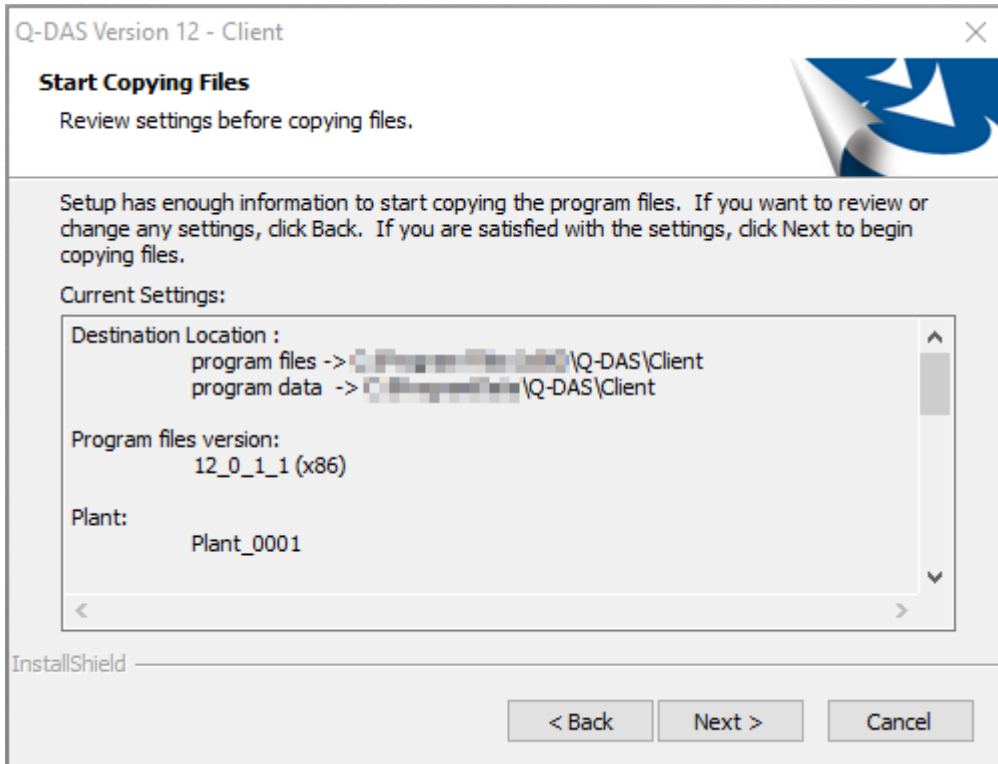
Select the respective option and click "Next >".



## 1.10 Start the installation

A preview shows the settings you adjusted.

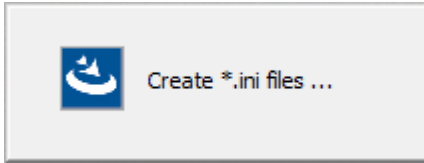
To change the settings, click on “< Back” to repeat one of the previous steps.



Start the installation by clicking “Next >”.

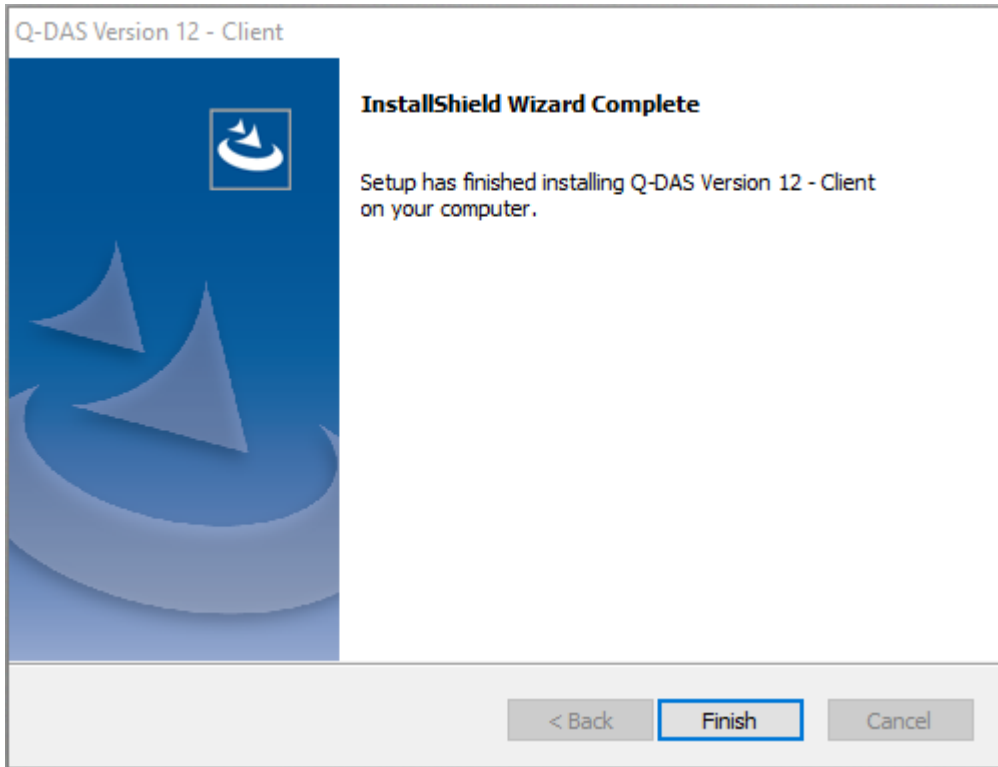
## 1.11 Create the product INI

Depending on the number of selected products, creating the INI files for the client might take some time.



## 1.12 End of installation

After all installation have been completed, the wizard shows the following message.



Click "Finish" to close the installation.

## 1.13 Launcher

The launcher starts client installations of the software.

Q-DAS QM-TOOLS - V 12 > Client Q-DAS V12

Name	Änderungsdatum	Typ
 V12- Q-DAS Launcher - Client	01.02.2018 17:09	Verknüpfung

It shows all products that have been prepared for this client (see [Product selection](#) chapter).

